

KSYRIUM Equipe 11 (White & Black)

Use: for road bike use only. Any other use (such as on a tandem, cyclo-cross bike, or off-road use...) is highly inadvisable, is the sole responsibility of the user and voids the Mavic warranty.

Recommended maximum weight of the cyclist and equipment: 100 kg.

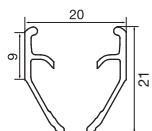
WHEEL WEIGHT WITHOUT QUICK-RELEASE SKEWER (Black)

Front	770 g
Rear M10	920 g
Rear ED11	905 g

WHEELS REFERENCES

	Black	White
Front	111 569 10	111 584 10
Rear M10	111 570 11	111 585 11
Rear ED11	111 571 12	111 586 12
Pair M10	111 572 14	111 587 14
Pair ED11	111 573 14	111 588 14

RIMS



SALES REFERENCES:



Ø VALVE HOLE
Ø: 6.5 mm
Length: ≥ 32 mm

Black: Front: 120 214 15

White: Front: 120 212 15

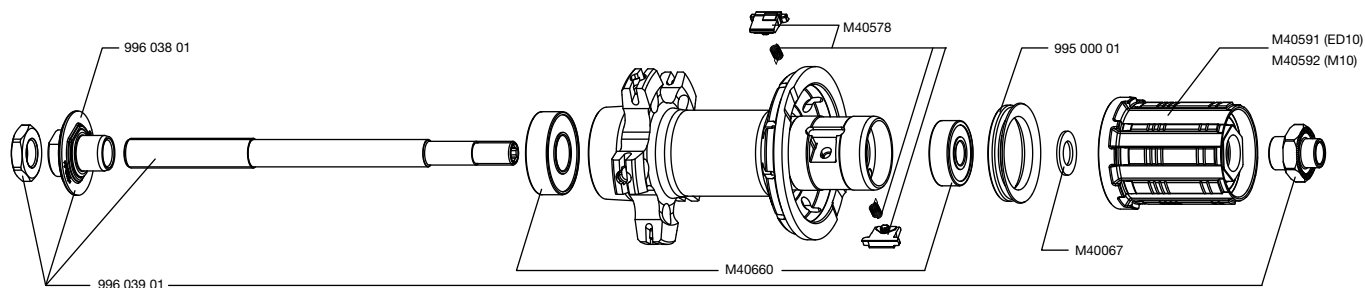
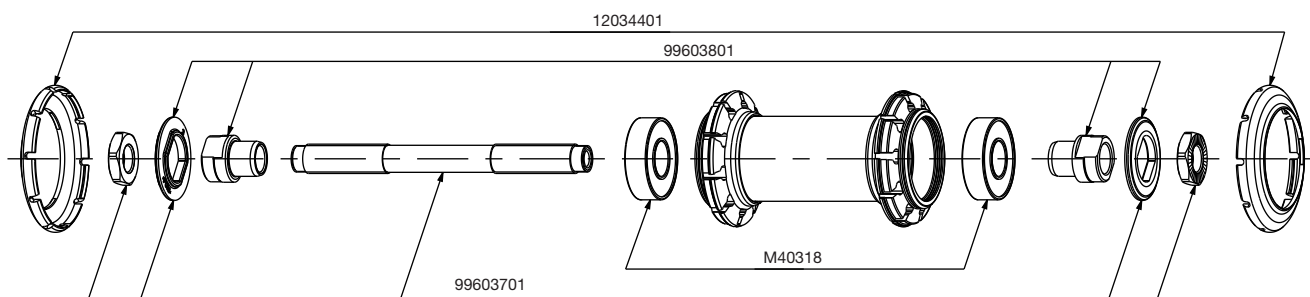


RECOMMENDED TIRE WIDTH

Dimensions:
Ø 700: ETRTO 622 x 15C
Recommended tire width: 19 to 32 mm

HUBS

MAINTENANCE: Clean with a dry cloth or soapy water if necessary.
Do not use a high-pressure washer.



WHEEL BUILDING

REFERENCES AND LENGTHS:

Front:	120 312 01, length 282 mm (per 10, integrated nipples)
Rear drive side:	120 313 01, length 278 mm (per 10, integrated nipples)
Rear non-drive side:	120 314 01, length 301 mm (per 10, integrated nipples)

FEATURES:

Black bladed steel spokes and front Self-Lock and rear nipples

LACING PATTERN:

Front: radial
Rear: Isopulse

TENSION:

Front: 80 to 90 kg
Rear drive side: 130 to 150 kg

ACCESSORIES

WHEELS SUPPLIED WITH:

- Conventional aluminum quick-release skewer on front M40350
- Conventional aluminum quick-release skewer on rear M40351
- ED11 12D locking ring (with rear wheel ED11) 108 317 01
- Wheel user guide

MAINTENANCE

Replacing the front axle and bearings
Replacing the rear axle
Maintaining and replacing the free wheel mechanism
Replacing the rear bearings
Replacing a spoke
Replacing the front rim
Replacing the rear rim

See 2005 TM, page 20
See 2007 TM, page 20
See 2003 TM, page 21
See 2004 TM, page 22
See 2008 TM, page 25
See 2008 TM, page 25
See 2009 TM, page 31

Refer to the website for quick and convenient access to information: www.tech-mavic.com