

COSMIC® CARBONE SL PREMIUM

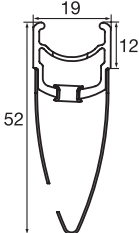

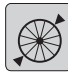

USE: Use only on a road bike. Any other use (such as on a tandem, cyclo-cross bike, or off-road use...) is strongly inadvisable, is the sole responsibility of the user and voids the Mavic warranty.

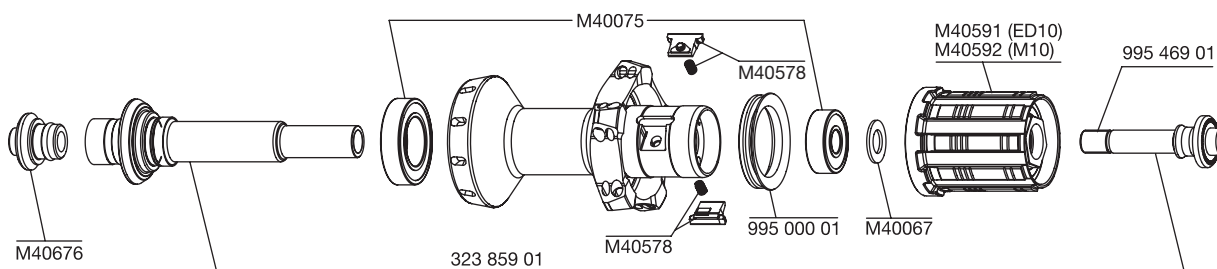
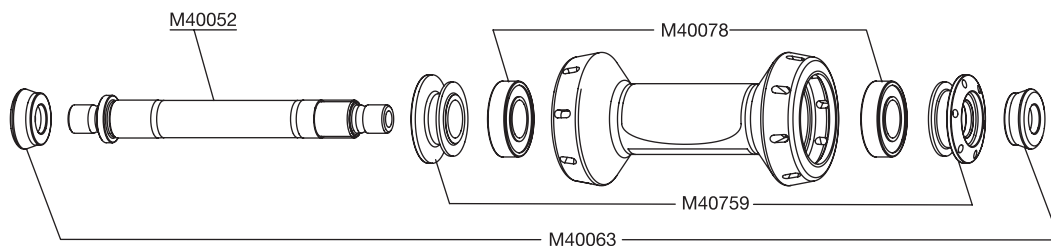
WHEEL WEIGHTS WITHOUT QUICK RELEASE SKEWER:

Front: 785 g
Rear M10 : 985 g
Rear ED10 : 970 g

REFERENCES :

Front: 995 272 10
Rear M10 : 995 273 11
Rear ED10 : 995 274 12
Pair M10 : 995 280 14
Pair ED10 : 995 275 14

RIMS	SALES REFERENCES: Front: 995 370 10 Rear: 995 370 13	
WIDTH 	VALVE HOLE Ø  Ø: 6.5 mm Length.: ≥ 32 mm	RECOMMENDED TIRE WIDTH AND PRESSURE  Dimensions: Ø 700 only ETRTO 622 x 13 compatible Recommended tire width: 19 to 28  Recommended tire pressure: See page 17
	When replacing the rear rim: 1. With the valve hole towards you, turn the rim such that the traceability label (bar code) cannot be seen. 2. The spoke in the first hole to the right of the valve hole should be inserted on the drive side and should be a non-traction spoke.	
HUBS	MAINTENANCE: Clean with a dry cloth or soap and water. Do not use pressurized water.	



WHEEL BUILDING	REFERENCES AND LENGTHS	Front: 323 903 01, length 291 mm (per 8, with nipples) Rear drive side: 323 904 01, length 307 mm (per 10, with nipples) Rear non-drive side: 323 905 01, length 289 mm (per 10, with nipples)
-----------------------	-------------------------------	--

FEATURES:
Black, bladed, stainless steel, straight pull spokes with brass ABS nipples (self-locking).
Yellow front nipples: Ø thread: 2.3 mm
Rear nipples: Ø thread: 2.6 mm

LACING PATTERN:
Front: radial
Rear: crossed 2 drive side, radial non-drive side

TENSION:
Front: 105 to 145 kg
Rear drive side: 120 to 160 kg

ACCESSORIES	WHEELS SUPPLIED WITH:	MAINTENANCE
<ul style="list-style-type: none"> • BR 601 Titanium front quick release skewer 323 485 01 • BR 601 Titanium rear quick release skewer 323 486 01 • Valve extender M40013 • Rim tape • Wheel bags M40135 • Computer magnet M40540 (with front wheel) • Angled spoke wrench M40001 (with rear wheel) • Wrench for aerodynamic spokes M40567 (with rear wheel) • Free play adjustment wrench M40123 (with rear wheel) • ED10 12D locking ring M40640 (with rear wheel ED10) • User guide and warranty card 		Replacing the front axle and bearings See 2005 TM page 20 Replacing the rear axle See page 20 Maintaining and replacing the free wheel mechanism See page 21 Replacing the rear bearings See 2003 TM page 22 Replacing a spoke See 2005 TM page 23 Replacing the front rim See 2005 TM page 24 Replacing the rear rim See 2005 TM page 27 To quickly consult this information in a practical manner, refer to www.tech-mavic.com