

# KSYRIUM EQUIPE 08

**USE:** use only on a road bike. Any other use (such as on a tandem, cyclo-cross bike, or off-road use...) is strongly inadvisable, is the sole responsibility of the user and voids the Mavic warranty.

## WHEEL WEIGHTS WITHOUT QUICK RELEASE SKEWER:

Front: 810 g  
Rear M10: 975 g  
Rear ED10: 960 g

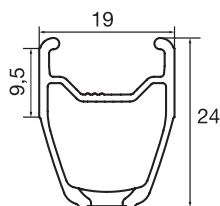
## BLACK WHEEL REFERENCES

	WORLD	USA
Front:	996 110 10	995 504 10
Rear M10:	996 111 11	995 505 11
Rear ED10:	996 112 12	995 506 12
Pair M10:	995 507 14	995 507 14
Pair ED10:	996 113 14	995 508 14

## SILVER WHEEL REFERENCES

	WORLD	USA
Front:	996 114 10	995 704 10
Rear M10:	996 115 11	995 708 11
Rear ED10:	996 116 12	995 709 12
Pair M10:	995 715 14	995 715 14
Pair ED10:	996 717 14	995 716 14

## RIMS



### SALES REFERENCES:

#### Black

Front: 996 050 10  
Rear: 996 050 13

#### Silver

Front: 996 051 10  
Rear: 996 051 13

### VALVE HOLE Ø



Ø: 6.5 mm  
Length: ≥ 32 mm

### RECOMMENDED TIRE WIDTH AND PRESSURE



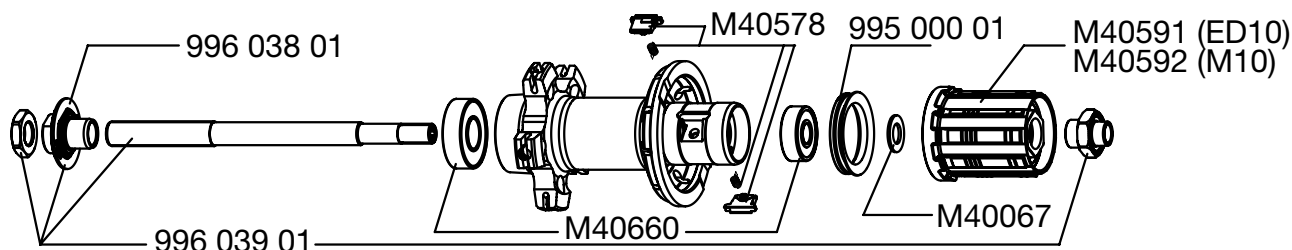
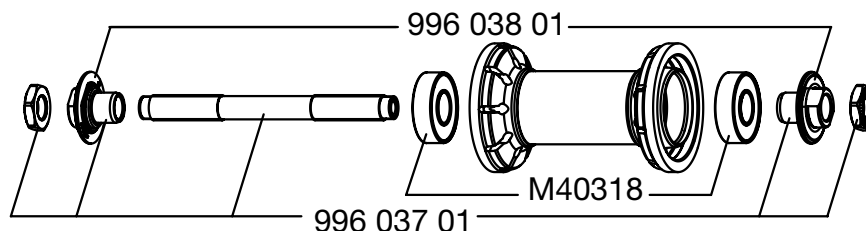
Dimensions: ETRTO 622 x 15C  
Recommended tire width: 19 to 28 mm



Recommended tire pressure: See page 21

## HUBS

**MAINTENANCE:** Clean with a dry cloth or soap and water. Do not use pressurized water.



As the front hub is made up of 3 parts, maintenance operations to the hubs (replacing the axle or bearings) must always be carried out on the assembled wheel (hub, rim and spokes assembled).

## WHEEL BUILDING

### REFERENCES AND LENGTHS:

Black front:	996 057 01, length 278 mm (per 9, with nipples)
Black drive side:	996 058 01, length 274 mm (per 10, with nipples)
Black non-drive side:	996 059 01, length 298.5 mm (per 10, with nipples)
Silver front:	996 060 01, length 278 mm (per 9, with nipples)
Silver drive side:	996 061 01, length 274 mm (per 10, with nipples)
Silver non-drive side:	996 062 01, length 298.5 mm (per 10, with nipples)

### FEATURES:

Black or silver stainless steel, bladed straight pull spokes with ABS nipples

### LACING PATTERN:

Front: radial  
Rear: Isopulse

### TENSION:

Front: 80 to 90 kg  
Rear drive side: 130 to 145 kg

## ACCESSORIES

### WHEELS SUPPLIED WITH:

- Traditional aluminum front quick release skewer M40350
- Traditional aluminum rear quick release skewer M40351
- ED10 12D locking ring M40640 (with rear wheel ED10)
- Rim tape
- User guide and warranty card

## MAINTENANCE

Replacing the front axle and bearings  
Replacing the rear axle  
Maintaining and replacing the free wheel mechanism  
Replacing the rear bearings  
Replacing a spoke  
Replacing the front rim  
Replacing the rear rim

See 2004 TM page 19  
See 2004 TM page 20  
See 2004 TM page 21  
See 2004 TM page 22  
See page 25  
See page 25  
See page 27

To quickly consult this information in a practical manner, refer to [www.tech-mavic.com](http://www.tech-mavic.com)