

# CROSSTRAIL LEFTY

**USE:** use only on a Cross Mountain or Cross Country MTB fitted with a Cannondale Lefty fork and disc brakes. Any other use (such as on a tandem, Cyclo-Cross bike, road bike, free-ride or downhill bike...) is strongly inadvisable, is the sole responsibility of the user and voids the Mavic warranty.

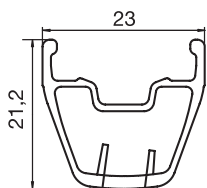
## WHEEL WEIGHTS WITHOUT QUICK RELEASE SKEWER:

Front: 825 g  
Rear: 975 g

## WHEEL REFERENCES:

Front: 995 838 10  
Rear: 995 197 13  
Pair: 995 839 14

## RIMS



## SALES REFERENCES:

Front: 995 418 10      Rear: 995 418 13

## VALVE HOLE Ø



Ø: 6.5 mm  
Length: ≥ 32 mm

## RECOMMENDED TIRE WIDTH AND PRESSURE



Dimensions: Ø 26"  
ETRTO 559 x 19C and UST Tubeless compatible  
Recommended tire width: 1.5" to 2.3"



Recommended tire pressure:  
See page 21

When replacing the front rim:

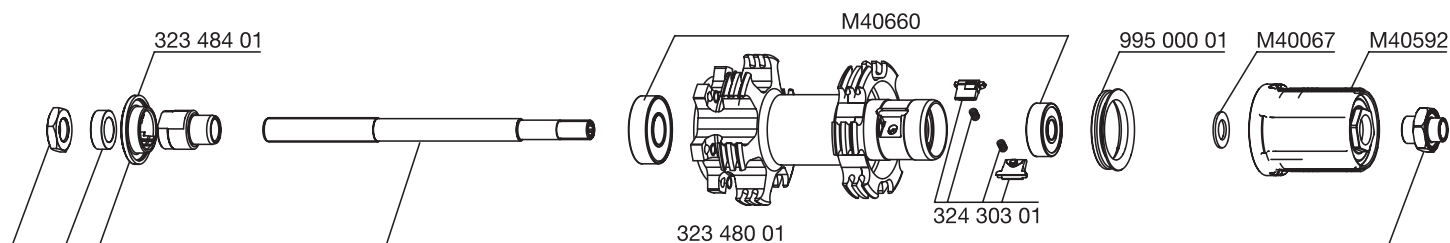
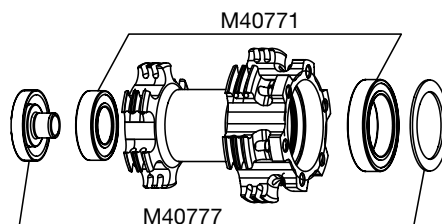
1. With the valve hole near you, the raised indicator bump must be to the left of the valve hole
2. The spoke in the 1st hole to the right of the valve hole should be inserted on the disc side and should be a non-braking spoke.

When replacing the rear rim:

1. With the valve hole near you, the 2 raised indicator bumps must be to the right of the valve hole;
2. The spoke in the 1st hole to the right of the valve hole should be inserted on the drive side and should be a non-traction spoke.

## HUBS

**MAINTENANCE:** Clean with a dry cloth or soap and water. Do not use pressurized water.



## WHEEL BUILDING

## REFERENCES AND LENGTHS:

Front and rear: 995 419 01, length 273 mm (per 12, integrated nipples)

## FEATURES:

Black, bladed, stainless steel, straight pull spokes with integrated M7 nipples (self-locking).

## LACING PATTERN:

Front and rear: crossed 2 on both sides

## TENSION:

Front disc side: 100 to 120 kg  
Rear drive side: 115 to 135 kg

## ACCESSORIES

## WHEELS SUPPLIED WITH:

- "Lefty" assembly accessories M40777 (front wheel)
- Rear quick release skewer M40352
- Removable UST valve 995 282 01
- Wrench for aerodynamic spokes
- User guide and warranty card

## MAINTENANCE

Fitting and removing the front wheel from the fork  
Replacing the front axle and bearings  
Replacing the rear axle  
Maintaining and replacing the free wheel mechanism  
Replacing the rear bearings  
Replacing a spoke  
Replacing the front rim  
Replacing the rear rim

See 2004 TM page 18  
See 2004 TM page 18  
See 2004 TM page 20  
See 2007 TM page 21  
See 2004 TM page 22  
See 2004 TM page 25  
See 2004 TM page 28  
See 2004 TM page 29

To quickly consult this information in a practical manner, refer to [www.tech-mavic.com](http://www.tech-mavic.com)