

CROSSRIDE UB/DISC 08

USE: use only on a Cross Mountain or Cross Country MTB fitted with disc brakes. Any other use (such as on a tandem, Cyclo-Cross bike, road bike, free-ride or downhill bike...) is strongly inadvisable, is the sole responsibility of the user and voids the Mavic warranty.

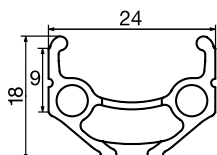
WHEEL WEIGHTS WITHOUT QUICK RELEASE SKEWER:

Front: 910 g
Rear: 1060 g

WHEEL REFERENCES INTERNATIONAL STANDARD:

Front: 995 867 10
Rear: 995 868 13
Pair: 995 869 14

RIMS



SALES REFERENCES:

Front and rear: 996 096 15

VALVE HOLE Ø



Ø: 8.5 mm with
6.5 mm valve
adapter
Length: ≥ 32 mm

RECOMMENDED TIRE WIDTH AND PRESSURE



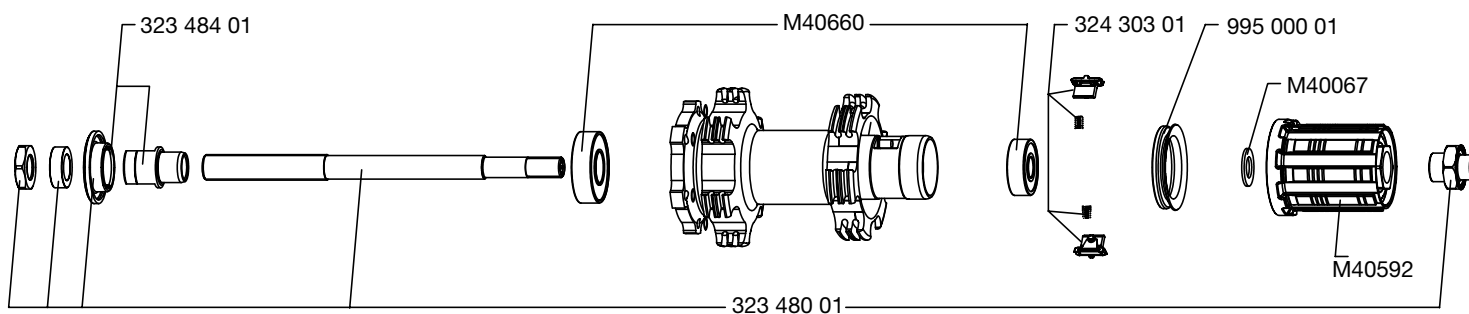
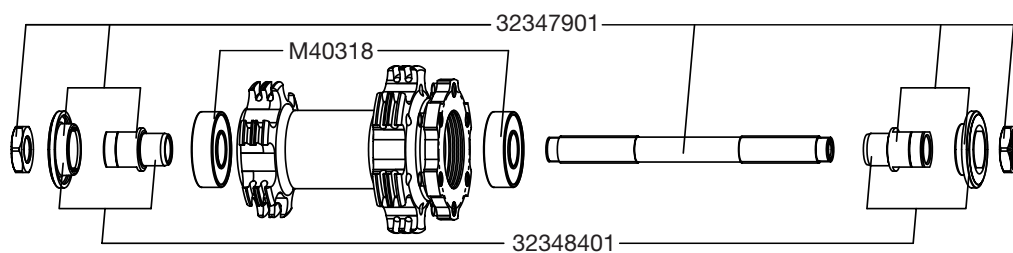
Dimensions: Ø 26"
ETRTO 559 x 17C
Recommended tire width: 1.5 to 2.3



Recommended
tire pressure:
See page 21

MAINTENANCE: Clean with a dry cloth or soap and water.
Do not use pressurized water.

HUBS



WHEEL BUILDING

REFERENCES AND LENGTHS:

Front and rear: Front and rear: 996 071 01, length 270 mm (per 12, with nipples)

FEATURES:

Silver stainless steel straight pull bladed spokes with Self Lock system and traditional spoke nipples

LACING PATTERN:

Front and rear: crossed 2 on both sides

TENSION:

Front disc side: 100 to 120 kg
Rear drive side: 120 to 140 kg

ACCESSORIES

WHEELS SUPPLIED WITH:

- Traditional aluminum front quick release skewer: M40350
- Traditional aluminum rear quick release skewer: M40351
- Rim tape 559x20x0.6
- User guide and warranty card

MAINTENANCE

Replacing the front axle and bearings
Replacing the rear axle
Maintaining and replacing the free wheel mechanism
Replacing the rear bearings
Replacing a spoke
Replacing the front rim
Replacing the rear rim

See 2004 TM page 19
See 2004 TM page 20
See 2007 TM page 21
See 2004 TM page 22
See 2004 TM page 25
See 2004 TM page 28
See 2004 TM page 29

To quickly consult this information in a practical manner, refer to www.tech-mavic.com