

R-SYS PREMIUM

USE: use only on a road bike. Any other use (such as on a tandem, cyclo-cross bike, or off-road use...) is highly inadvisable, is the sole responsibility of the user and voids the Mavic warranty.
Recommended maximum weight of the cyclist and his equipment: 100 kg.

WHEEL WEIGHTS WITHOUT QUICK-RELEASE SKEWER

Front: 575 g
Rear M10: 800 g
Rear ED10: 785 g

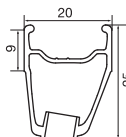
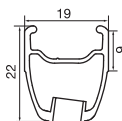
WHEEL REFERENCES

Front: 996 248 10
Rear M10: 996 249 11
Rear ED10: 996 250 12
Pair M10: 996 378 14
Pair ED10: 996 401 14

RIMS

REFERENCES:

Clincher : Front: 996 848 10
Rear: 996 848 13



Ø VALVE HOLE



Ø: 6.5 mm
Length: ≥ 32 mm

RECOMMENDED TIRE WIDTH



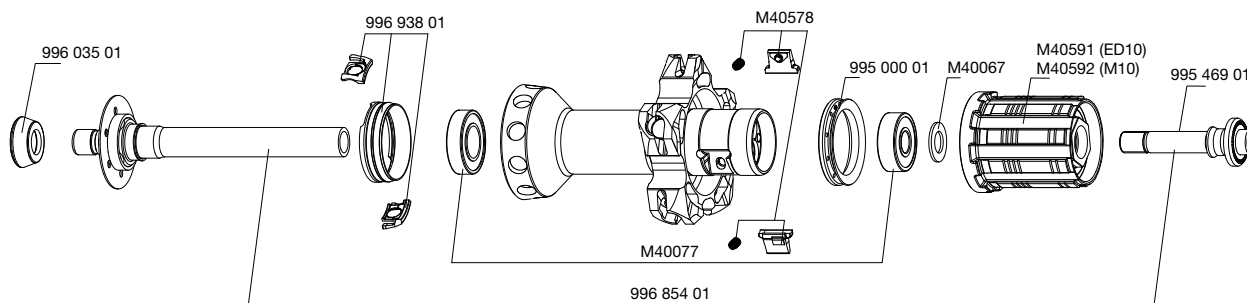
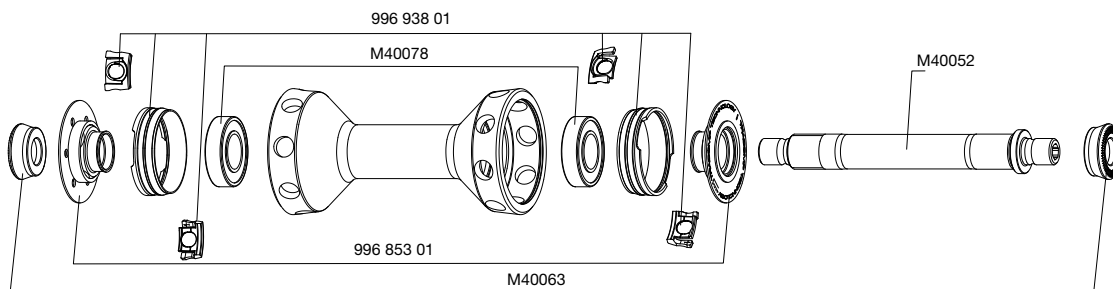
Dimensions: ETRTO 622 x 15C
Recommended tire width: 19 to 32 mm

When replacing the rear rim:

1. With the valve hole near you, the two raised indicator bumps must be to the right of the valve hole
2. The spoke in the first hole to the right of the valve hole is a non-driving spoke and should be inserted in the drive side of the hub

HUBS

MAINTENANCE: Clean with a dry cloth or soap and water if necessary.
Do not use a high-pressure washer.



WHEEL BUILDING

REFERENCES AND LENGTHS:

Front: 107 958 01, length 285 mm, (per 9, integrated nipples)
Drive side: 996 073 01, length 294.5 mm, (per 10, integrated nipples)
Non-drive side: 107 959 01, length 284 mm, (per 10, integrated nipples)

FEATURES:

Front and rear non-drive side: carbon tubular spokes (TraComp)
Rear drive side: black Zicral straight pull spokes with integrated, self-locking nipples

LACING PATTERN:

Front: radial, TraComp system
Rear: crossed 2 drive side, radial non-drive side, TraComp system



TENSION:

Front: 70 to 100 kg
Rear drive side: 90 to 110 kg

ACCESSORIES

WHEELS SUPPLIED WITH:

- BR 601 Titanium front quick-release skewer 323 485 01
- BR 601 Titanium rear quick-release skewer 323 486 01
- Computer magnet built in the spoke (front wheel)
- Free play adjustment wrench M40123 (with rear wheel)
- Spoke wrench 996 079 01 (with rear wheel)
- Zicral spoke wrench M40567 (with rear wheel)
- TraComp ring tool 996 080 01
- ED10 12D locking ring M40640 (with rear wheel ED10)
- Wheel bags M40135
- User guide

MAINTENANCE

Replacing the front axle and bearings
Replacing the rear axle
Maintaining and replacing the free wheel mechanism
Replacing the rear bearings
Important note for fitting TraComp spokes
Identifying a damaged TraComp carbon spoke
Removing/Refitting the TraComp ring
Trueing and replacing a TraComp spoke
Replacing the front rim
Replacing the rear rim

See 2005 TM, page 20
See 2008 TM, page 24
See 2003 TM, page 21
See 2008 TM, page 24
See 2008 TM, page 28
See 2008 TM, page 28
See page 36
See 2008 TM, page 30
See 2008 TM, page 30
See 2008 TM, page 31

To consult this information quickly in a practical manner, refer to www.tech-mavic.com

Never turn a TraComp spoke nipple with having first removed the TraComp rings from the hub, otherwise the spoke may be irreversible damaged.
Never fit a computer magnet other than the one integrated.
Only transport the wheels in the wheel bags supplied. Avoid side shocks to the TraComp spokes.