

# COMETE ROAD 2013

**Use:** for road bike use only. Any other use (such as on a tandem, cyclo-cross bike, or off-road use...) is highly inadvisable, is the sole responsibility of the user and voids the Mavic warranty.

Recommended maximum weight of the cyclist and equipment: 100 kg.

## WHEEL WEIGHT WITHOUT QUICK-RELEASE SKEWER AND WITHOUT TUBULAR

Rear M11 1115 g  
Rear ED11 1100 g

## WHEEL REFERENCES

Rear M11 326 483 11  
Rear ED11 326 484 12



### Ø VALVE HOLE

Ø: 6.5 mm



### RECOMMENDED TYRE WIDTH

Dimensions: ETRTO 633 Tubular  
Recommended tubular width: 19 to 28 mm



**EXALITH 2:** for efficient and long-lasting braking performance, use only the special Mavic® Exalith 2® brake pads supplied with your wheels.

The use of other brake pads may be dangerous for the user and will lead to exclusion of the warranty.

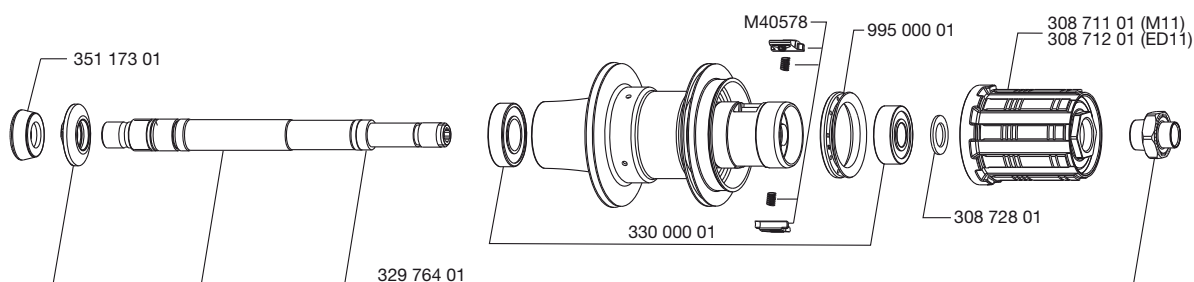
Please carefully read the "Exalith 2 Warning" provided with your wheels.

Clean with a dry cloth or soapy water if necessary.

The brake pads can be ordered separately using the following references 329 435 01 (HG, Sram, Mavic) and 329 436 01 (ED).

## HUBS

**MAINTENANCE:** Clean with a dry cloth or soapy water if necessary.  
Do not use a high-pressure washer.



## ACCESSORIES

### WHEELS SUPPLIED WITH:

- BR 601 rear quick-release skewer M40150
- Valve adapter 323 634 01
- Wheel bags M40135
- Yksion Pro PowerLink rear tubular (325 929 23)
- Mavic brake pads for braking on Exalith 2 brake track HG/Sram/Mavic 329 435 01 and ED 329 436 01
- ED11 12D locking ring (with rear wheel ED11) 108 317 01
- Wheel and tubular user guide

## MAINTENANCE

### Specific tool:

- Rear bearing: M40120 and 351 266 01

Refer to the website for quick and convenient access to maintenance information (replacement of an axle, bearings, free wheel, spokes, and rims)

[www.tech-mavic.com](http://www.tech-mavic.com)