

COSMIC CARBONE 40 (tubular version)

Use: for road bike use only. Any other use (such as on a tandem, cyclo-cross bike, or off-road use...) is highly inadvisable, is the sole responsibility of the user and voids the Mavic warranty.

Recommended maximum weight of the cyclist and equipment: 100 kg.

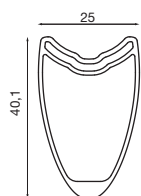
WHEEL WEIGHT WITHOUT QUICK-RELEASE SKEWER AND WITHOUT TUBULAR

Front	635 g
Rear M11	815 g
Rear ED11	800 g

WHEEL REFERENCES

Front	328 183 10
Rear M11	328 184 11
Rear ED 11	328 185 12
Pair M11	328 186 14
Pair ED11	328 187 14

RIMS



SALES REFERENCES Front: 366 455 10
Rear: 366 456 13



Ø VALVE HOLE
Ø: 6.5 mm



RECOMMENDED TYRE WIDTH

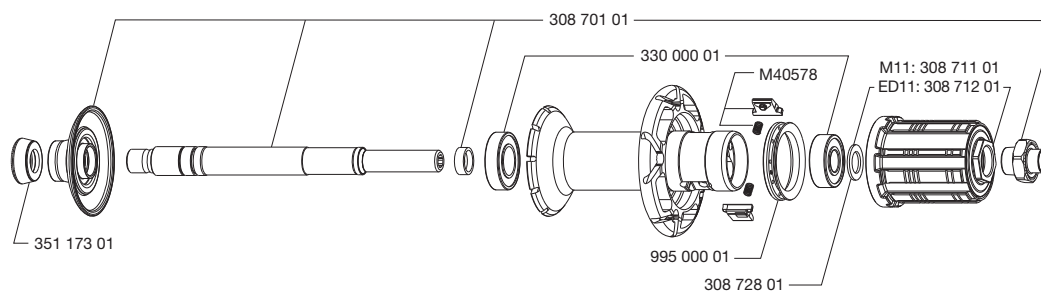
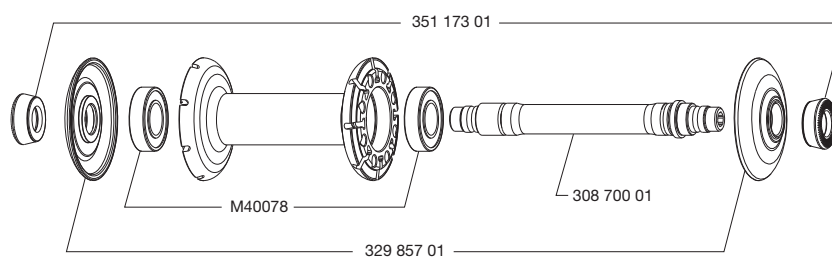
Dimensions: Ø 700 Tubular
Recommended tubular width: 19 to 32 mm

When replacing the rear rim:

1. With the valve hole near you, the two raised indicator bumps must be to the right of the valve hole.
2. The first spoke to the right of the valve hole is a non-traction spoke and should be inserted in the drive side hub.

HUBS

MAINTENANCE: Clean with a dry cloth or soapy water if necessary.
Do not use a high-pressure washer.



WHEEL BUILDING

REFERENCES AND LENGTHS:

Front and rear non-drive side: 366 451 01, length 272 mm (per 10, nipples included)
Drive side: 366 450 01, length 270 mm (per 10, nipples included)

FEATURES:

Black, swaged, bladed, straight pull steel spokes with integrated aluminum Force nipples

LACING PATTERN:

Front: radial
Rear: 2-crossed drive side, radial non-drive side

TENSION:

Front: 60 to 70 kg
Rear drive side: 100 to 110 kg

ACCESSORIES

WHEELS SUPPLIED WITH:

- BR 601 front quick-release skewer M40149
- BR 601 rear quick-release skewer M40150
- Spoke wrench M40494 (with rear wheel)
- Wheel bags M40135
- Mavic brake pads for braking on a carbon brake track: HG/Sram/Mavic 120 131 01 or ED 120 132 01
- Computer magnet M40540 (with front wheel)
- Multifunction adjustment wrench 325 423 01
- Yksion Pro SSC GripLink 23 mm front tubular (325 928 23)
- Yksion Pro SSC PowerLink 23 mm rear tubular (325 929 23)
- ED11 12D locking ring (with rear wheel ED11) 108 317 01
- User manual
- Sheet of Mavic stickers

MAINTENANCE

Specific tool:

- Front bearing: M40120
- Rear bearing: M40120 & 351 266 01

Refer to the website for quick and convenient access to maintenance information (replacement of an axle, bearings, free wheel, spokes, and rims)

www.tech-mavic.com