

COSMIC CARBONE SLS

Use: for road bike use only. Any other use (such as on a tandem, cyclo-cross bike, or off-road use...) is highly inadvisable, is the sole responsibility of the user and voids the Mavic warranty.

Recommended maximum weight of the cyclist and equipment: 100 kg.

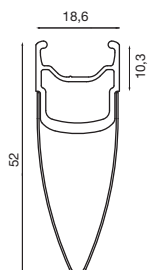
WHEEL WEIGHT WITHOUT QUICK-RELEASE SKEWER AND WITHOUT TYRE

Front	765 g
Rear M11	945 g
Rear ED11	930 g

WHEEL REFERENCES

Front	328 189 10
Rear M11	328 190 11
Rear ED11	328 191 12
Pair M11	328 192 14
Pair ED11	328 193 14

RIMS



SALES REFERENCES Front: 120 171 10
Rear: 120 171 13



Ø VALVE HOLE
Ø: 6.5 mm



RECOMMENDED TYRE WIDTH

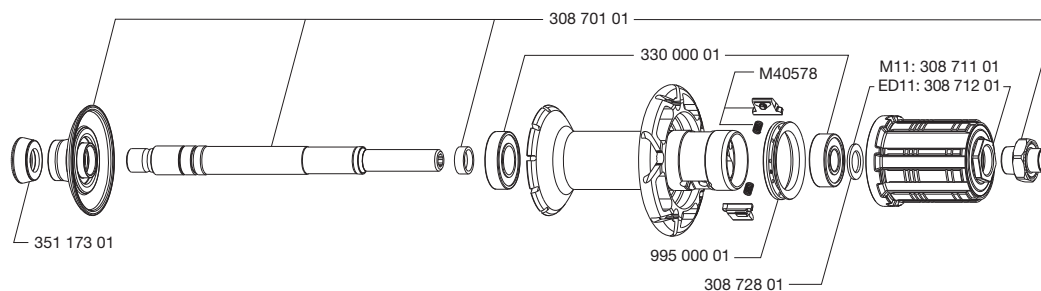
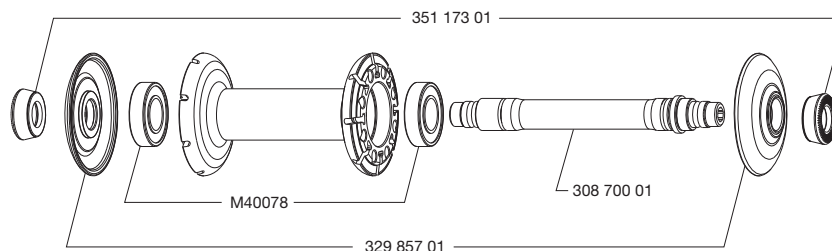
Dimensions: ETRTO 622x13C
Recommended clincher width: 19 to 28 mm

When replacing the rear rim:

1. The rib in the bottom of the rim must be placed on the drive side.
2. The first spoke to the right of the valve hole is a non-traction spoke and should be inserted in the drive side hub.

HUBS

MAINTENANCE: Clean with a dry cloth or soapy water if necessary.
Do not use a high-pressure washer.



WHEEL BUILDING

REFERENCES AND LENGTHS: Front and rear non-drive side: 366 445 01, length 289 mm (per 10, nipples included)
Drive side: 366 444 01, length 287 mm (per 10, nipples included)

FEATURES:

Steel straight pull spokes with steel ABS type spoke nipples at the front and rear on non-drive side, and brass on the drive side.

LACING PATTERN:

Front: radial
Rear: 2-crossed drive side, radial non-drive side

TENSION:

Front: 90 to 100 kg
Rear drive side: 120 to 130 kg

ACCESSORIES

WHEELS SUPPLIED WITH:

- BR 301 front quick-release skewer M40149
- BR 301 rear quick-release skewer M40150
- Rim strip 18x622 (1 per wheel)
- Valve extender 118 952 01
- Multifunction adjustment wrench 325 423 01
- Yksion Pro White 23 mm front and rear clincher (328 351 23)
- Mavic butyl inner tubes (127 385 01)
- ED11 12D locking ring (with rear wheel ED11) 108 317 01
- Spoke wrench M40001
- User manual
- Sheet of Mavic stickers

MAINTENANCE

Specific tool:

- Front bearing: M40120
- Rear bearing: M40120 & 351 266 01
- Spoke wrench: M40001

Refer to the website for quick and convenient access to maintenance information (replacement of an axle, bearings, free wheel, spokes, and rims)

www.tech-mavic.com