

# CROSSROC WTS 650b (27.5)



**Use:** use only on a Cross-country or Cross-mountain MTB fitted with disc brakes. Any other use (such as on a tandem, road bike, cyclo-cross bike, free-ride or downhill bike...) is highly inadvisable, is the sole responsibility of the user and voids the Mavic warranty.

Recommended maximum weight of the cyclist and equipment: 100 kg.

## WHEEL WEIGHT WITHOUT QUICK-RELEASE SKEWER AND WITHOUT TYRE

Front: 855 g  
Rear: 970 g

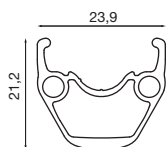
## WHEEL REFERENCES

Front: 353 075 10  
Rear: 353 076 13  
Pair: 353 077 14

## RIMS

### SALES REFERENCES

Front and rear: 366 928 15



Ø VALVE HOLE  
Ø: 6.5 mm



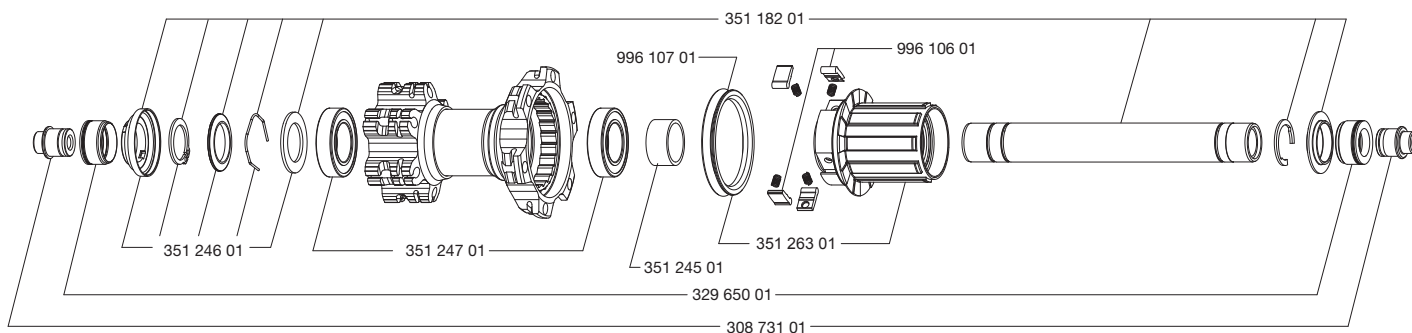
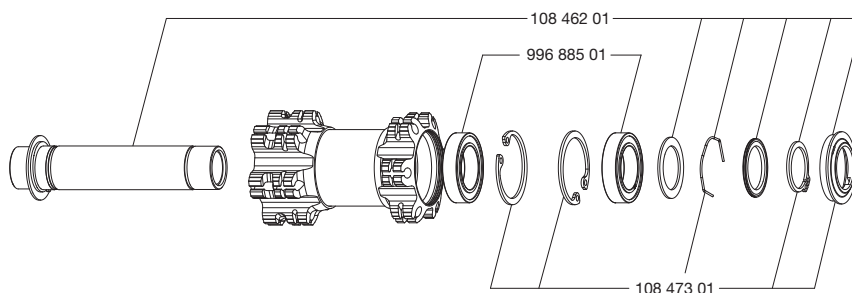
### RECOMMENDED TYRE WIDTH

Dimensions: ETRTO 584x19C

Recommended clincher width: 1.5" to 2.3"

## HUBS

**MAINTENANCE:** Clean with a dry cloth or soapy water if necessary. Do not use a high-pressure washer.



## WHEEL BUILDING

### REFERENCES AND LENGTHS:

Front and rear non-drive side: 366 892 01, length 277 mm (per 12, nipples included)  
Drive side: 366 893 01, length 275 mm (per 12, nipples included)

### FEATURES:

Black, swaged, bladed, straight pull steel spokes with steel ABS type spoke nipples

### LACING PATTERN:

Front and rear: 2-cross lacing on both sides

### TENSION:

Front: 105 to 120 kg  
Rear drive side: 105 to 120 kg

## ACCESSORIES

### WHEELS SUPPLIED WITH:

- BR 101 rear quick-release skewer M40351
- Tubeless rim strip 19x584 (1 per wheel): 359 937 01
- 2 Removable round UST valves 129 838 01
- Rear Adapter 12=>9.5 mm 308 731 01
- Valve reduction M40381
- Crossroc Roam front and rear clincher 27.5x2.20 (356 289 22)
- User manual

## MAINTENANCE

### Specific tool:

- Front bearing: 108 850 01 & 996 887 01
- Rear bearing: M40119

## OPTIONS

- Front Adapters 9 mm + quick-release skewer: 996 941 01

Refer to the website for quick and convenient access to maintenance information (replacement of an axle, bearings, free wheel, spokes, and rims)  
[www.tech-mavic.com](http://www.tech-mavic.com)