

CROSSROC WTS 26



Use: use only on a Cross-country or Cross-mountain MTB fitted with disc brakes. Any other use (such as on a tandem, road bike, cyclo-cross bike, free-ride or downhill bike...) is highly inadvisable, is the sole responsibility of the user and voids the Mavic warranty.

Recommended maximum weight of the cyclist and equipment: 100 kg.

WHEEL WEIGHT WITHOUT QUICK-RELEASE SKEWER AND WITHOUT TYRE

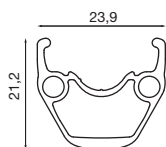
Front: 815 g
Rear: 940 g

WHEEL REFERENCES

Front: 354 010 10
Rear: 354 011 13
Pair: 354 012 14

RIMS

SALES REFERENCES Front and rear: 366 927 15



Ø VALVE HOLE
Ø: 6.5 mm

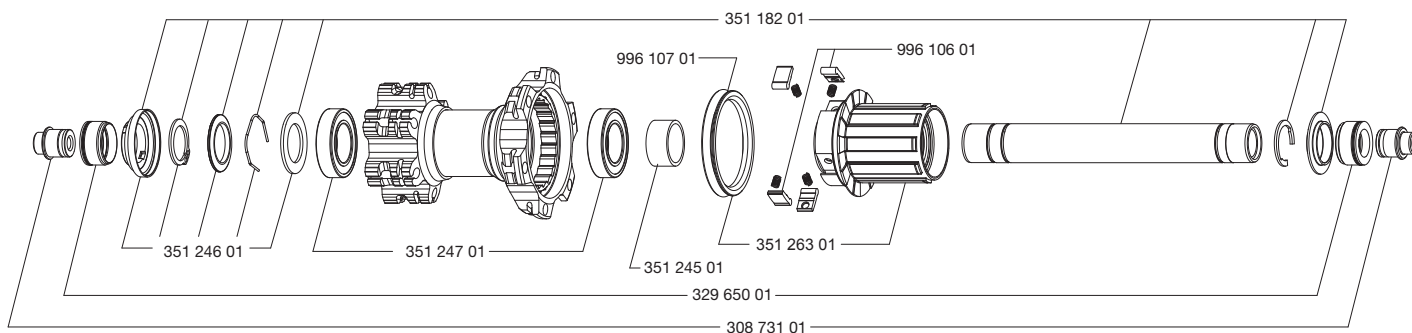
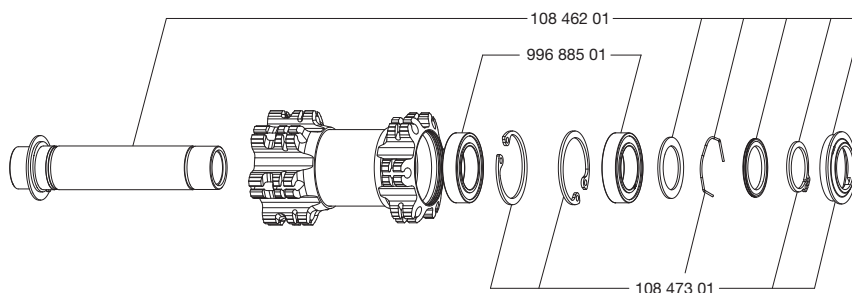


RECOMMENDED TYRE WIDTH

Dimensions: ETRTO 559x19C
Recommended clincher width: 1.5" to 2.3"

HUBS

MAINTENANCE: Clean with a dry cloth or soapy water if necessary. Do not use a high-pressure washer.



WHEEL BUILDING

REFERENCES AND LENGTHS:

Front and rear non-drive side:
Drive side:

366 752 01, length 263 mm (per 12, nipples included)
366 753 01, length 261 mm (per 12, nipples included)

FEATURES:

Black, swaged, bladed, straight pull steel spokes with steel ABS type spoke nipples

LACING PATTERN:

Front and rear: 2-cross lacing on both sides

TENSION:

Front: 105 to 120 kg
Rear drive side: 105 to 120 kg

ACCESSORIES

WHEELS SUPPLIED WITH:

- BR 101 rear quick-release skewer M40351
- Tubeless rim strip 19x559 (1 per wheel): 359 936 01
- 2 Removable round UST valves 129 838 01
- Rear Adapter 12=>9.5 mm 308 731 01
- Crossroc Roam front and rear clincher 26x2.30 (356 295 23)
- User manual

MAINTENANCE

Specific tool:

- Front bearing: 108 850 01 & 996 887 01
- Rear bearing: M40119

OPTIONS

- Front Adapters 9 mm + quick-release skewer: 996 941 01

Refer to the website for quick and convenient access to maintenance information (replacement of an axle, bearings, free wheel, spokes, and rims)
www.tech-mavic.com