

KSYRIUM™ ELITE

USE: Use only on a road bike. Any other use (such as on a tandem, cyclo-cross bike, or off-road use...) is strongly inadvisable, is the sole responsibility of the user and voids the Mavic warranty.

WHEEL WEIGHTS WITHOUT QUICK RELEASE SKEWER:			
Ø 700		Ø 650	
Front:	770 g	Front:	710 g
Rear M10:	935 g	Rear M10:	900 g
Rear ED10:	920 g	Rear ED10:	885 g

BLACK 700 WHEEL REFERENCES:	
Front:	995 150 10
Rear M10:	995 151 11
Rear ED10:	995 152 12
Pair M10:	995 153 14
Pair ED10:	995 154 14

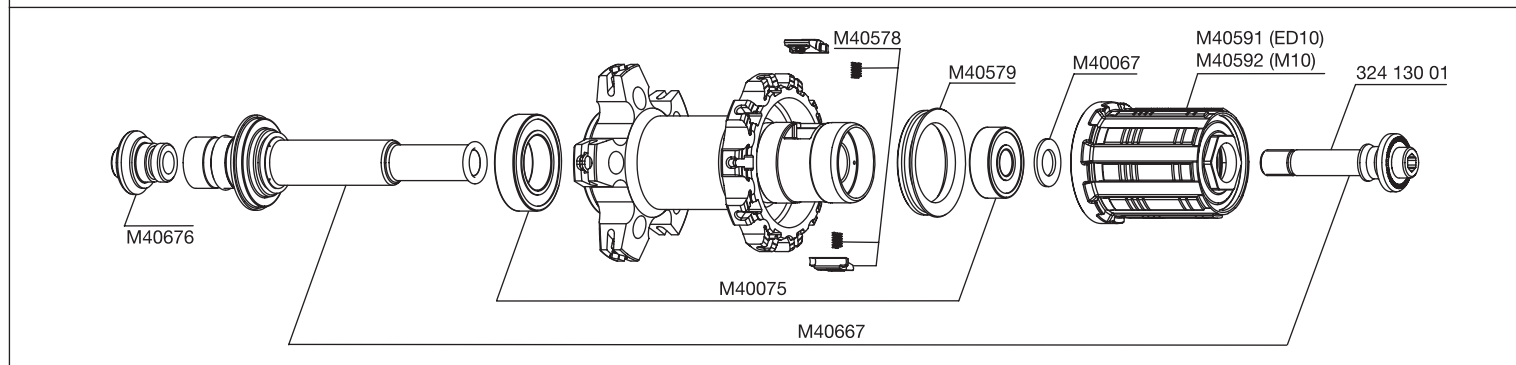
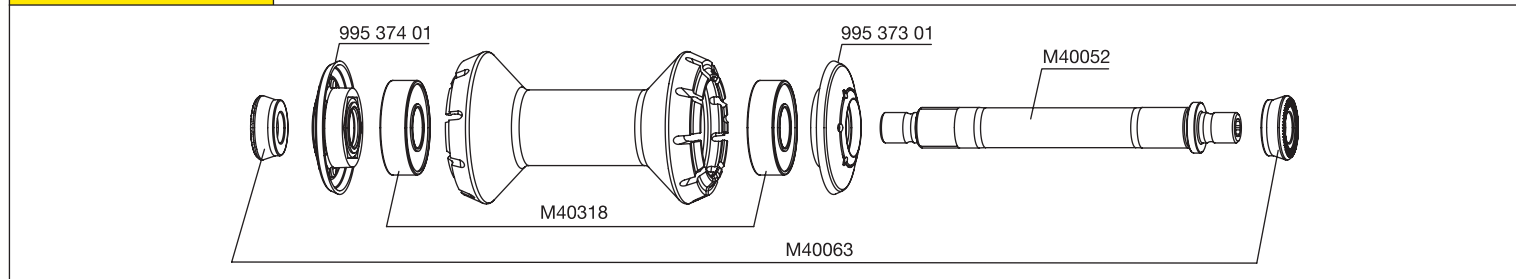
SILVER 700 WHEEL REFERENCES:	
Front:	995 160 10
Rear M10:	995 161 11
Rear ED10:	995 162 12
Pair M10:	995 163 14
Pair ED10:	995 164 14

BLACK 650 WHEEL REFERENCES:	
Front:	995 170 10
Rear M10:	995 171 11
Rear ED10:	995 172 12
Pair M10:	995 173 14
Pair ED10:	995 174 14

RIMS	SALES REFERENCES:				
	Black 700 :	Front: 995 220 10	Silver 700 :	Front: 995 226 10	Black 650 :
	Rear: 995 220 13		Rear: 995 226 13		Rear: 995 251 13

WIDTHS	VALVE HOLE Ø	RECOMMENDED TIRE WIDTH AND PRESSURE
	<p>Ø: 6.5 mm Length: ≥ 32 mm</p>	<p>Dimensions: Ø 700 or 650 ETRTO 622 x 13 compatible (version 700), 571 x 13 (version 650) Recommended tire width: 19 to 28</p> <p>Recommended tire pressure: See page 17</p>
<p>When replacing the rear rim:</p> <ol style="list-style-type: none"> 1. With the valve hole near you, the 2 raised indicator bumps must be to the right of the valve hole; 2. The spoke in the first hole to the right of the valve hole should be inserted on the drive side and should be radial. 		

HUBS MAINTENANCE: Clean with a dry cloth or soap and water. Do not use pressurized water.



WHEEL BUILDING	REFERENCES AND LENGTHS	Black 700 front:	995 223 01, length 290 mm (per 9, integrated nipples)
		Black 700 drive side:	995 224 01, length 277 mm (per 10, integrated nipples)
	Black 700 non-drive side:	995 225 01, length 302 mm (per 10, integrated nipples)	
	Silver 700 front:	995 229 01, length 290 mm (per 9, integrated nipples)	
	Silver 700 drive side:	995 230 01, length 277 mm (per 10, integrated nipples)	
	Silver 700 non-drive side:	995 231 01, length 302 mm (per 10, integrated nipples)	
	Black 650 front:	995 254 01, length 264.5 mm (per 9, integrated nipples)	
	Black 650 drive side:	995 255 01, length 252 mm (per 10, integrated nipples)	
	Black 650 non-drive side:	995 224 01, length 277 mm (per 10, integrated nipples)	

FEATURES:	LACING PATTERN:	TENSION:
Silver or black, ultra bladed, stainless steel, straight pull spokes with integrated M7 aluminum nipples (self-locking).	Front: radial Rear: Isopulse	Front: 100 to 130 kg Rear drive side: 120 to 145 kg

ACCESSORIES	WHEELS SUPPLIED WITH:	MAINTENANCE
<ul style="list-style-type: none"> • Traditional aluminum front quick release skewer M40350 • Traditional aluminum rear quick release skewer M40351 • M7 spoke wrench M40494 (with rear wheel) • Wrench for aerodynamic spokes M40567 (with rear wheel) • ED10 12D locking ring M40640 (with rear wheel ED10) • Free play adjustment wrench M40123 (with rear wheel) • User guide and warranty card 		<ul style="list-style-type: none"> • Replacing the front axle and bearings • Replacing the rear axle • Maintaining and replacing the free wheel mechanism • Replacing the rear bearings • Replacing a spoke • Replacing the front rim • Replacing the rear rim
		<p>See 2005 TM page 20</p> <p>See page 20</p> <p>See page 21</p> <p>See 2003 TM page 22</p> <p>See 2005 TM page 23</p> <p>See 2005 TM page 24</p> <p>See page 23</p>
		<p>To quickly consult this information in a practical manner, refer to www.tech-mavic.com</p>