

ASTM CATEGORY 5 : GRAVITY RIDING FOCUSED ON THE DESCENT

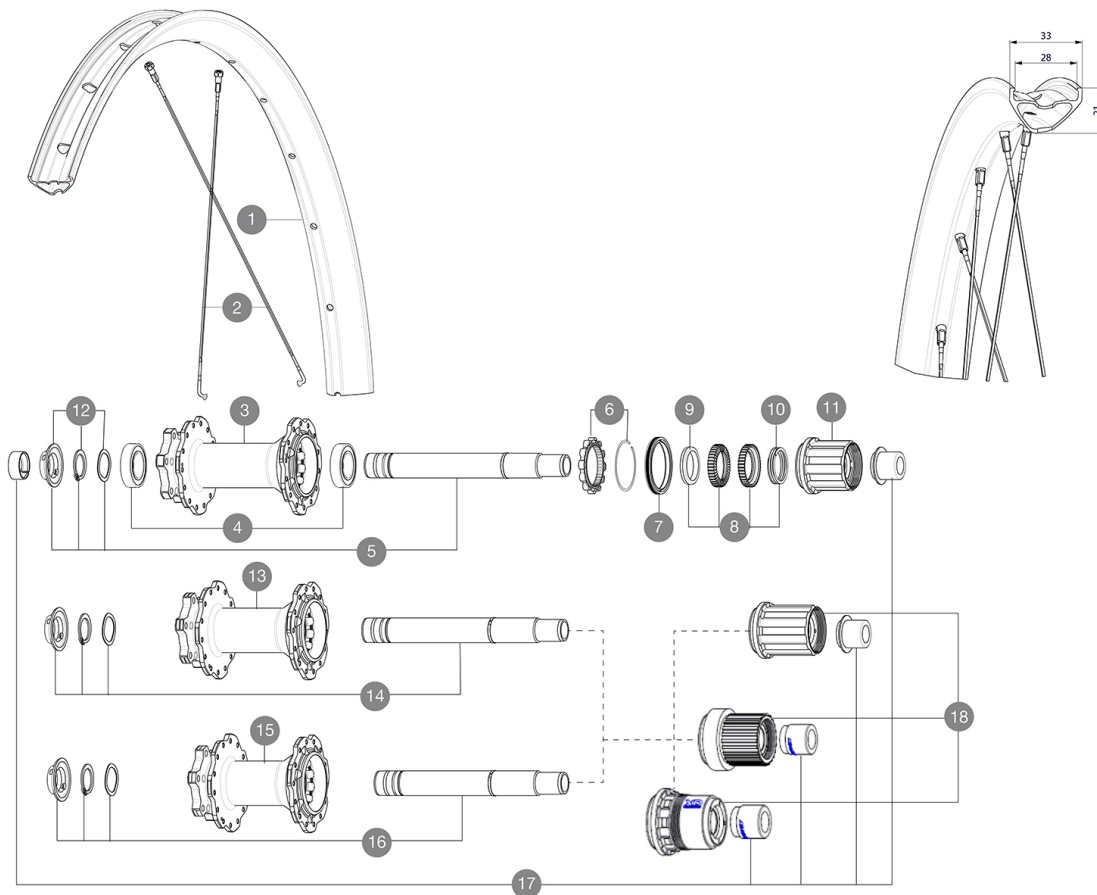
For a longer longevity of the wheel, Mavic recommends that the total weight supported by the wheels doesn't exceed 150kg, bike included

Recommended tyre sizes: 60mm to 76mm (2.35" to 3.0")

Maximum tyre pressure: 3.2bar/46PSI with a 47mm tyre - 2.85bar/41PSI with a 64mm tyre

REFERENZEN RÄDER

R39541	DEEMAX INT 29 BST HG	R39571	Deemax 29 21 Rr 12x157 7s
R39551	DEEMAX INT 29 BST XD	R39581	DEEMAX INT 29 BST MS
R39561	DEEMAX INT 29 12X157 HG	R39591	DEEMAX INT 29 12X157 XD



RIMS



&NBSP;:

1	V3766215	Kit Front/Rear rim Deemax 21 29"
	V2640101	UST RIM TAPE 32mm for 28 to 29mm wide rims

SPOKES

2	V2387901	KIT 14 J BENT STEEL SPOKES 299mm DEEMAX DH 29" + black steel
---	----------	--

HUB SHELLS

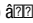
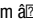

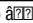

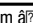
3	N/A	NABENKÖRPER
4	M40076	HUB BEARINGS 17x30x7 6903 x 2
5	V2374901	Kit ID360 150/157 D6T 7S 2AXLE WITH CIRCLIP
6	V2252701	KIT ID360 INSERT SHAPED EAR LOBE > 2017
7	V00063631	Kit ID360 seal version 2 (larger)
8	V2375201	KIT ID360 24 TEETH 2 RATCHET + MTB SPRING + PAD (specific)
9	V2375401	KIT ID360 MTB 24T 3 NOISE REDUCING PADS
10	V2372901	KIT 3 ID360 MTB SPRINGS
11	V2375001	Freehub Body ID360 7S Alu
12	V2373001	KIT ADJUST. SYSTEM QRM AUTO ID360 for 17x30x7 bearing
13	N/A	NABENKÖRPER
14	V2374801	Kit ID360 150/157 D6T AXLE WITH CIRCLIP
15	N/A	NABENKÖRPER
16	V2372201	KIT ID360 148 D6T AXLE WITH CLIP
18	V3780101	HG9 Alloy MTB Freewheel Body ID360

18	V3740101	XD MTB Freewheel Body ID360
18	V3990101	MicroSpline MTB Freewheel Body ID360

ADAPTERS

	V2510901	ID360 EVO REAR AXLE ADAPTERS 12x135mm DCL & D6T
17	V2510701	ID360 EVO REAR AXLE ADAPTERS 12x142mm DCL & D6T

GELIEFERT MIT

2 replacement spokes with each wheel	
Boost-Adapter (20x110 mm)  im Lieferumfang eines Boost-VR enthalten	
HR-Achsstummel 12x150 mm  bei HR mit 12x157-mm-Achse im Lieferumfang enthalten	
Non-Boost-Adapter (20x110 mm)  im Lieferumfang eines Non-Boost-VR enthalten	
UST valve and accessories (129 838 01)	
UST valve and accessories (129 838 01)	
UST valve and accessories (129 838 01)	
Pre-installed tubeless rim tape	
Pre-installed tubeless rim tape	
Pre-installed tubeless rim tape	
Multifunction adjustment wrench (delivered with rear wheel) (325 423 01)	
Multifunction adjustment wrench (delivered with rear wheel) (325 423 01)	
Multifunction adjustment wrench (delivered with rear wheel) (325 423 01)	
Boost-Adapter (20x110 mm)  im Lieferumfang eines Boost-VR enthalten	
Non-Boost-Adapter (20x110 mm)  im Lieferumfang eines Non-Boost-VR enthalten	
2 replacement spokes with each wheel	
HR-Achsstummel 12x150 mm  bei HR mit 12x157-mm-Achse im Lieferumfang enthalten	
2 replacement spokes with each wheel	

COMPATIBILITY

Freewheel: Shimano HG9, XD or Micro Spline	
VR-Achse: 15x110 mm Boost (Steckachse)	
Front axle: 15x110 Boost, convertible to 20x110 Boost thru axle with adapters	
Front axle: 15x110 Boost, convertible to 20x110 Boost thru axle with adapters	
Front axle: 15x110 Boost, convertible to 20x110 Boost thru axle with adapters	
HR-Achse: 12x148 mm Boost (Steckachse)	
Freewheel: Shimano HG9, XD or Micro Spline	
Boost Axles : 15X110 ; 12X148	
Boost Axles : 15X110 ; 12X148	
Boost Axles : 15X110 ; 12X148	
DH spacing axles: 12X150 , 12x157 , 12X157-7speed	
DH spacing axles: 12X150 , 12x157 , 12X157-7speed	
DH spacing axles: 12X150 , 12x157 , 12X157-7speed	
Freewheel: Shimano HG9, XD or Micro Spline	