

MAVIC E-SPEEDCITY 1 700

1
2023
FRONT

ASTM CATEGORY 2 : road and offroad with jumps less than 15cm

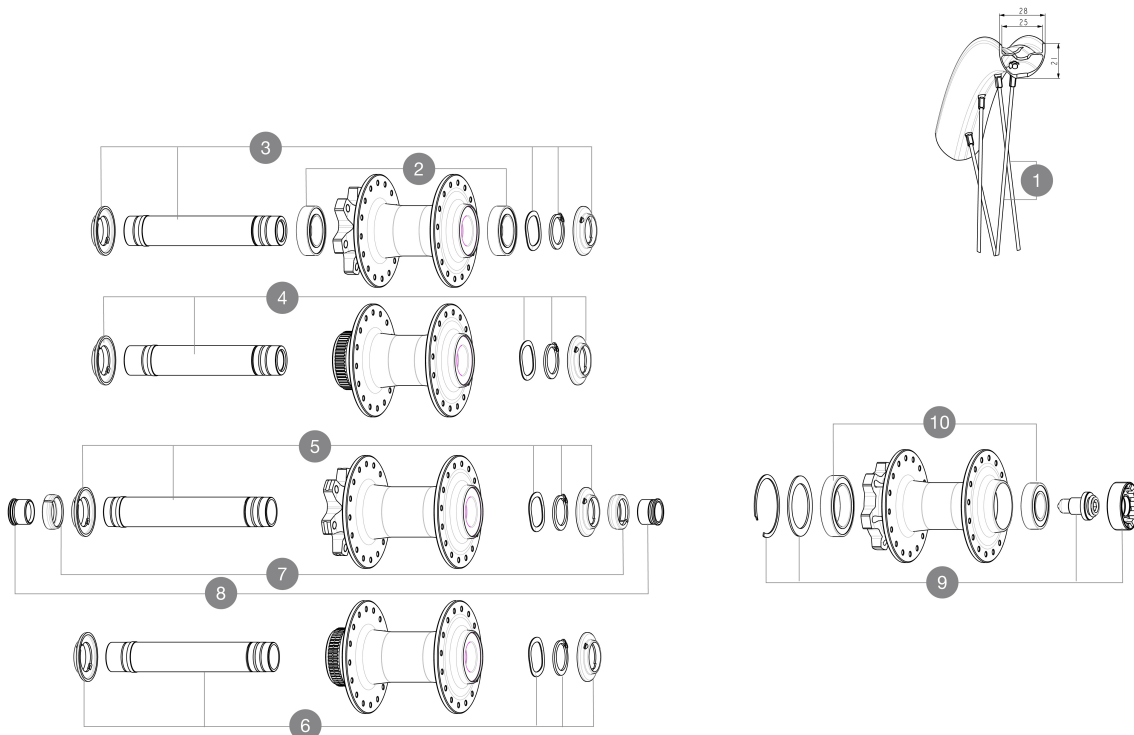
Axe avant : axe traversant de 15 mm convertible en blocage rapide au moyen des adaptateurs fournis

Recommended tire sizes: 28 to 64 mm (1.1" to 2.5")

Boost : Adaptateurs Torque Cap (V2374401)

For a longer longevity of the wheel, Mavic recommends that the total weight supported by the wheels doesn't exceed 180kg, E-bike included

RÉFÉRENCES ROUES



RAYONS

1 V00062431 Kit 16 ft/r Jbent bk rd spk 293 29"+np

MOYEUX

2 V2500901 KIT BEARINGS 18x30x7 + WAVED WASHER + CLIP
3 V2375501 Kit QRM auto front axle 100x12/15mm D6T
4 V2374001 KIT 12x100mm FRONT AXLE DCL QRM AUTO ALLROAD > 2019
5 V2372401 KIT 110mm AXLE QRM AUTO MTB > 2019
6 V2375601 Kit 110mm axle QRM auto MTB from 2019 DCL
9 36709301 ASSEMBLY KIT CROSSROC SUPERMAX
10 M40771 KIT ROULEMENT pour MOYEU LEFTY

ADAPTATEURS

7 V2372501 15mm MTB Axle Cap QRM Auto From 2019
8 V2680201 12mm Ft Road Axle Adapters QRM
V2680301 Kit Ft Road Adapter 12 >> 9mm
99694101 2 REDUCTEURS 15/9mm

MAVIC E-SPEEDCITY 1 700

LIVRE AVEC

User guide	
Rondelle de cassette M9 non montée sur la roue arrière	
Fond de jante	
Rondelle de cassette M9 non montée sur la roue arrière	
User guide	
User guide	
Fond de jante	

COMPATIBILITE

Freewheel: Shimano/Sram, convertible to Campagnolo ED11, N3W and XD-R with optional driver bodies	
Front axle: 12mm thru axle, easily convertible to quick release with optional adapters. Convertible to 15mm with complete axle replacement	
Corps de roue libre: convertible SRAM XD route (kit V2580101 vendu séparément)	
Corps de roue libre: convertible SRAM XD route (kit V2580101 vendu séparément)	
Rear axle: 12mm thru axle, convertible to Quick Release with optional adapters and axle replacement	
Corps de roue libre: convertible SHIMANO HG light route (kit V3850101 vendu séparément)	
Corps de roue libre: convertible SHIMANO HG light route (kit V3850101 vendu séparément)	
Corps de roue libre: convertible SHIMANO MS (kit V3990101 vendu séparément)	
Corps de roue libre: convertible SHIMANO MS (kit V3990101 vendu séparément)	
Front axle: 12mm thru axle, easily convertible to quick release with optional adapters. Convertible to 15mm with complete axle replacement	
Front axle: 12mm thru axle, easily convertible to quick release with optional adapters. Convertible to 15mm with complete axle replacement	
Corps de roue libre: convertible CAMPAGNOLO N3W (kit V4270101 vendu séparément)	
Corps de roue libre: convertible CAMPAGNOLO N3W (kit V4270101 vendu séparément)	
ID360 Shimano Micro Spline alloy freewheel body (V3990101)	
Corps de roue libre ID360 Sram XD (V3740101)	
Axe arrière: fixation par écrous uniquement (fournis), filetage M9x1	
ID360 Shimano Micro Spline alloy freewheel body (V3990101)	
Axe arrière: axe traversant de 12 mm convertible en blocage rapide au moyen d'adaptateurs	