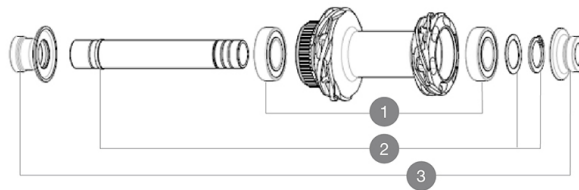


REFERENCES WHEELS

H44201 MR801 INF SP FT CL 12X100 24H



HUB SHELLS

- | | | |
|---|----------|-------------------------------------|
| 1 | M40129 | KIT 2 BEARINGS 6902 15x28x7 |
| 2 | V2373301 | KIT QRM AUTO FRONT AXLE 12mm > 2019 |

ADAPTERS

- | | | |
|---|----------|---|
| 3 | V2374701 | KIT FRONT ROAD FORK REST 12mm FOR J BENT DISC HUB |
|---|----------|---|

MAVIC MR801 INFINITY SP DISC

COMPATIBILITY

Freewheel: Shimano/Sram, convertible to Campagnolo ED11, N3W and XD-R with optional driver bodies	
Front axle: 12mm thru axle, easily convertible to quick release with optional adapters. Convertible to 15mm with complete axle replacement	
Rear axle: 12mm thru axle, convertible to Quick Release with optional adapters and axle replacement	
Maximum spoke width: 2,4mm	

Specifications

WHEEL HUB

Infinity hubs

- **Front and rear bodies** : aluminum
- **Axle material** : aluminum

Instant Drive 360 freewheel technology

QRM Auto bearing preload technology

- **Front** : Quick release and 12x100 through axle compatible
- **Rear** : Quick Release, 12x142 and 12x135 compatible

VERSIONS

- **Disc standard** : Center Lock® only
- **Front for disc brake** : 24, 28 and 32 holes
- **Rear for disc brake** : 24, 28 and 32 holes

WHEEL WEIGHTS