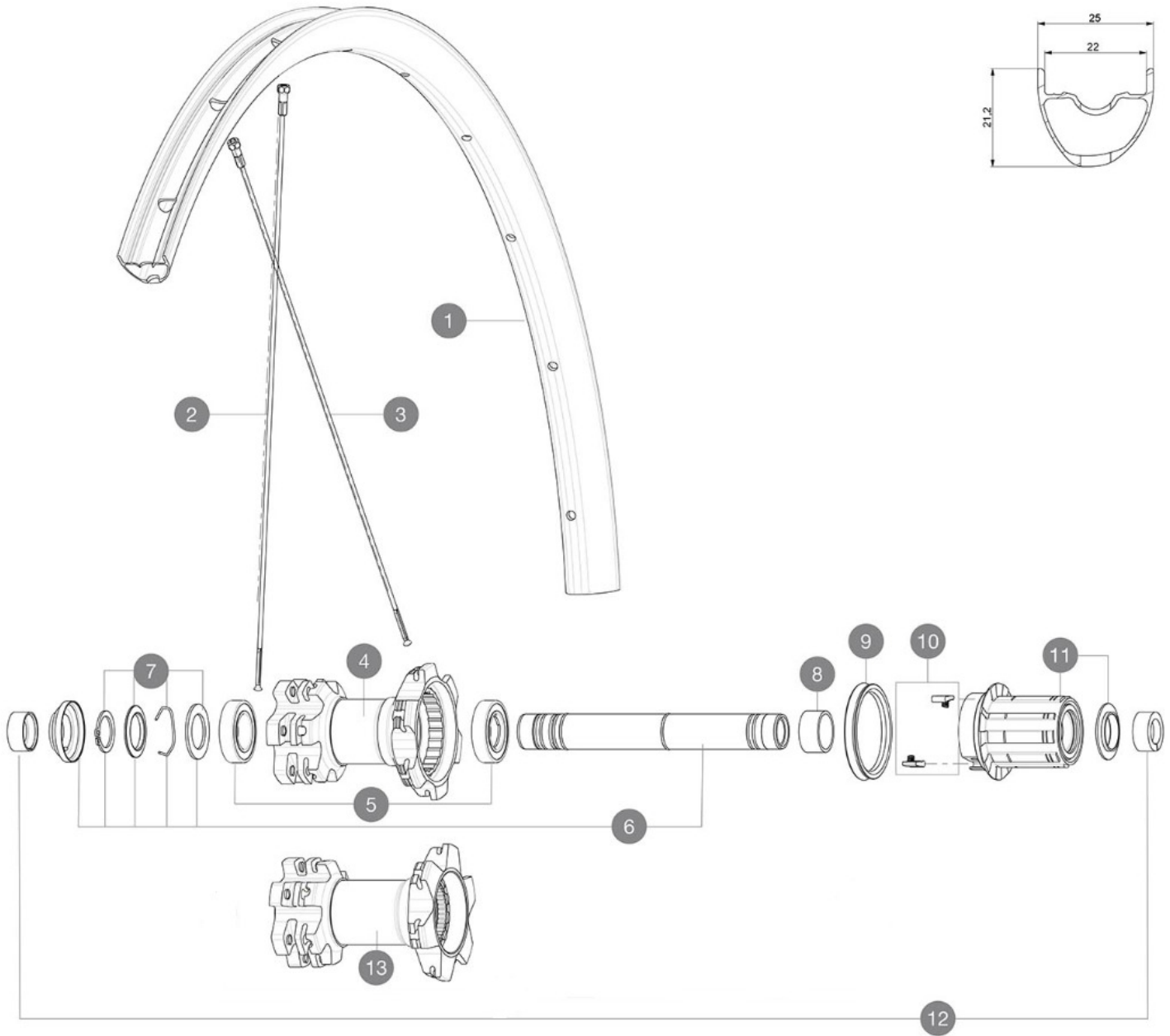


ASTM CATEGORY 3 : CROSS COUNTRY AND TRAIL RIDING

For a longer longevity of the wheel, Mavic recommends that the total weight supported by the wheels don't exceed 120kg, bike included
Recommended tyre sizes: 36 mm to 64 mm (1.4" to 2.5")

REFERENCES WHEELS

| | | | |
|--------|----------------|--------|--------------------|
| R17931 | Xmx27,5RrBst | R22481 | Xmx 27,5 Rr Bst XD |
| R22471 | Xmx 27,5 Rr XD | R17321 | Xmx27,5Rr |



RIMS



&NBSP;:

| | | |
|---|----------------------|---|
| 1 | V2317815 V2620101 | KIT FRONT/REAR RIM CROSSMAX 27,5" 22TSS UST RIM TAPE 25mm (for 21-24mm wide rim) |
|---|----------------------|---|

SPOKES

| | | |
|---|----------|--|
| 2 | V2385301 | KIT 12 FT/NDS CROSSMAX LIGHT 27,5" SPK 278mm |
| 3 | V2385101 | KIT 12 DS CROSSMAX LIGHT 27,5" SPK 275mm |

HUB SHELLS

| | | |
|---|----------|---|
| 4 | N/A | HUB BODY |
| 5 | M40076 | HUB BEARINGS 17x30x7 6903 x 2 |
| 6 | V2371201 | KIT REAR QRM AXLE 135-142 / BOOST 148mm |

| | | |
|----|----------|--|
| 7 | V2370401 | KIT REAR AUTO ADJUSTING PLAY 12mm AXLE |
| 8 | 35124501 | SET OF 3 REAR AXLE/FREEWHEEL BODY SPACERS MTB L1 |
| 9 | 99610701 | ITS-4 FREEWHEEL SEAL |
| 10 | 99610601 | PAWLS KIT FOR ITS-4 (OR TS-2) |
| 11 | 35126301 | TS-2 FREEWHEEL BODY + SEAL 2013 (NO PAWLS) - while stock las |
| 13 | N/A | HUB BODY |

ADAPTERS

| | | |
|----|----------|--|
| 12 | 32965001 | ADAPTER Rr 12x142mm Elite/CRide MTB (Rd) |
|----|----------|--|

DELIVERED WITH

| | |
|---|--|
| UST valve and accessories (129 838 01) | |
| Tubeless rim tape | |
| User guide | |

COMPATIBILITY

| | |
|---|--|
| Freewheel: Shimano/Sram or XD | |
| Front axle: convertible from 15mm thru axle to Quick Release with optional adapters | |
| Rear axle: 12mm thru axle, convertible to Quick Release with optional adapters | |

Specifications**RIMS**

- **Material** : S6000 Aluminum
- **Joint** : SUP
- **Drilling** : traditional
- **Valve hole diameter** : 6.5 mm
- **Tyre** : UST Tubeless and tubetype
- **Internal width** : 22 mm
- **ETRTO size 27.5"** : 584x22TSS
- **ETRTO size 29"** : 622x22TSS

Hookless profile

Use with Mavic Tubeless Tape

SPOKES

- **Material** : steel
- **Shape** : straight pull, round
- **Count** : 24 front and rear
- **Lacing** : front and rear crossed 2

WHEEL HUB

- **Front and rear bodies** : aluminum
- **Axle material** : aluminum
- **Front bearings** : auto adjust sealed cartridge bearings (QRM Auto), Rear bearings sealed cartridge bearings (QRM)
- **Freewheel** : TS-2 alloy

VERSIONS

- **Color** : Black only
- **Disc standard** : 6 Bolts only
- **Hub width** : Boost (front 110, rear 148) or Non-Boost (front 100, rear 135/142)

WHEEL WEIGHTS

Weight Rear 27.5": 925
Weight Rear 29": 960