

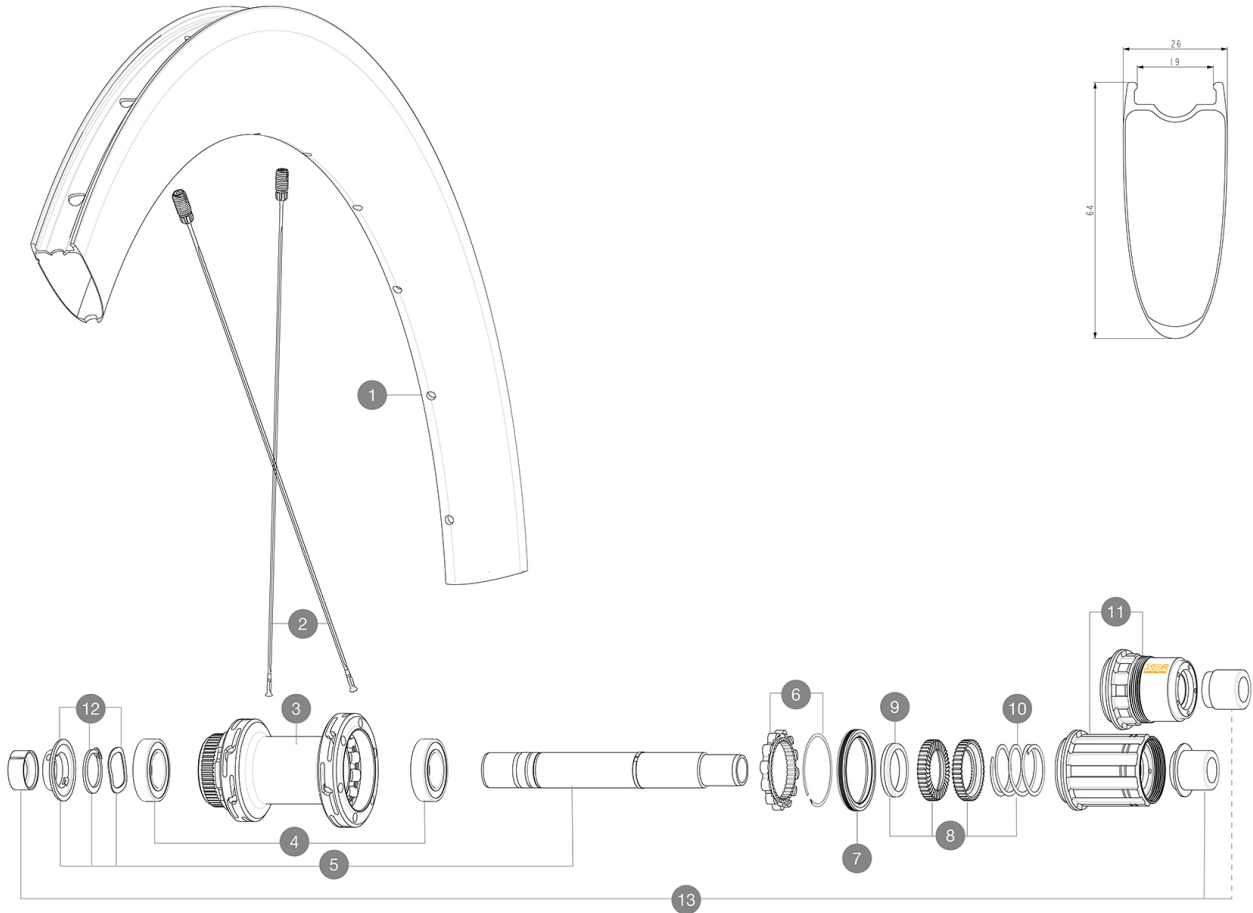
# MAVIC COSMIC SL 65 DISC

2021  
REAR

Maximum tyre pressure: 4.4bar/64PSI with a 28mm tyre - 2.6bar/38PSI with a 64mm tyre  
 ASTM CATEGORY 2 : road and offroad with jumps less than 15cm  
 Maximum tyre pressure: 6.75bar/97PSI with a 23mm tyre - 3.8bar/55PSI with a 62mm tyre  
 For a longer longevity of the wheel, Mavic recommends that the total weight supported by the wheels doesn't exceed 120kg, bike included  
 Recommended tyre sizes: 25 to 32 mm  
 Max. Pressure: see indication on wheel and tyre. If they differ, use the lowest of the 2  
 Maximum tyre size: width 62mm - pressure max. 3.8Bar/55PSI

## REFERENCES WHEELS

R36861 COS SL 65 CL 700 12X142 M11 R38981 COS SL 65 CL 700 12X142 XDR



## RIMS



&NBSP;:

**1** V4093115 Kit Front/Rear rim Cosmic SL 65 Disc while stock lasts  
 V2620101 UST RIM TAPE 25mm (for 21-24mm wide rim)

## SPOKES

**2** V4163301 Kit 12 Front/Rear Cosmic SL 65 Disc butted stainless spoke 2

## HUB SHELLS

**3** N/A HUB BODY  
**4** M40076 HUB BEARINGS 17x30x7 6903 x 2  
**5** V2373401 KIT ID360 135/142 DCL L1 AXLE WITH CLIP  
**6** V2252701 KIT ID360 INSERT SHAPED EAR LOBE > 2017  
**7** V00063631 Kit ID360 seal version 2 (larger)  
**8** V2251701 KIT ID360 2 RATCHETS + SPRING + GREASE  
**9** V2500501 KIT ID360 3 PADS NOISE REDUCING  
**10** V2251801 KIT 3 ID360 ROAD SPRINGS  
**11** V2580101 FREEHUB BODY XD Road ID360  
**11** V3430101 HG11 Freewheel Body ID360  
**12** V2373001 KIT ADJUST. SYSTEM QRM AUTO ID360 for 17x30x7 bearing

## ADAPTERS

**13** V2510701 ID360V2RrAxleAdapt12x142/148  
 V2510901 ID360 EVO RrAxleAdpt12x135/150  
 V2510801 ID360 V2 RrAxleAdapt9x135

# MAVIC COSMIC SL 65 DISC

 2021  
 REAR

## DELIVERED WITH

Mavic tyre sealant (rear wheel) (355 466 01)	
Front QR adapters (996 941 01 for MTB or B41 043 01 for road)	
Front QR adapters (996 941 01 for MTB or B41 043 01 for road)	
Front QR adapters (996 941 01 for MTB or B41 043 01 for road)	
Rear QR adapters for Instant Drive 360 (B49 894 01)	
Rear QR adapters for Instant Drive 360 (B49 894 01)	
Rear QR adapters for Instant Drive 360 (B49 894 01)	
UST valve and accessories (129 838 01)	
UST valve and accessories (129 838 01)	
UST valve and accessories (129 838 01)	
Pre-installed tubeless rim tape	
Pre-installed tubeless rim tape	
User guide	
User guide	
User guide	

## COMPATIBILITY

Freewheel: Shimano/Sram, convertible to Campagnolo and XD-R with optional driver bodies	
Freewheel: Shimano/Sram, convertible to Campagnolo and XD-R with optional driver bodies	
Front axle: 12x100 thru axle, easily convertible to quick release with included adapters. Not compatible with 15mm through axles.	
Front axle: 12x100 thru axle, easily convertible to quick release with included adapters. Not compatible with 15mm through axles.	
Rear axle: 12mm thru axle, convertible to Quick Release with included adapters	
Freewheel body: convertible SRAM XD road (kit V2580101 sold separately)	
Rear axle: 12mm thru axle, convertible to Quick Release with included adapters	
Freewheel body: convertible SHIMANO HG light road (kit V3850101 sold separately)	
Freewheel body: convertible SHIMANO MS (kit V3990101 sold separately)	
Freewheel body: convertible CAMPAGNOLO ED (kit V3440101 sold separately)	
Front axle: 12x100 thru axle, easily convertible to quick release with included adapters. Not compatible with 15mm through axles.	
Instant Drive 360 The new Instant Drive 360 freewheel system is super light and fast to engage with only 9Å°. A large contactless rubber seal provides low friction, while a wide array of end caps makes it super versatile.	
ID360 Sram XD freewheel body (V3740101)	
Rear axle: for fixing nuts only (included), M9x1 thread	
ID360 Shimano Micro Spline alloy freewheel body (V3990101)	
FTS-L Shimano / Sram freewheel body ([30871101] - Delivered on the wheel)	

## Specifications

### RIMS

Download date: 2024-07-16 / Update date: 2024-02-15

- Material : 100% carbon fiber
- Material : 100% carbon fiber

### WHEEL HUB

- Infinity Hub
- Body : aluminum

### WHEEL WEIGHTS

930