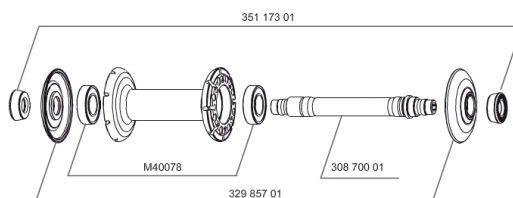


REFERENCES WHEELS

327998 C. CARBONE 80 013 TUB FRT WTS



RIMS



&NBSP;:

32976910 KIT FRONT COSMIC CARBONE 80 2013 RIM

SPOKES

30863201 KIT 10 FT/NDS CXR80/CC80 2013 BLK SPK 235mm

HUB SHELLS

32985701 HUB CAP & ADJUSTING NUT CXR 80

30870001 FRONT AXLE ROAD RIM BRAKING QRM +

M40078 FRONT HUB BEARINGS 6901 x 2

TYRES

32592823 YksionProSSCGripLinkTu 23

ADAPTERS

35117301 FT/RR FORK REST R-SYS/CC ULTIMATE > 2013/KSY PRO CARB T

MAVIC *Cosmic Carbone 80 T***DELIVERED WITH**

| | |
|---------------------------------|--|
| BR601 quick releases | |
| Wheelbags | |
| Carbon brake pads | |
| Valve extender | |
| Multifonction adjustment wrench | |
| User guide | |

Specifications**RIMS**

- **Material** : 100% woven 3K carbon fiber
- **Color** : carbon
- **Height** : 80 mm
- **Drilling** : traditional
- **Eyelet** : not eyeleted
- **Brake track** : carbon
- **Valve hole diameter** : 6.5 mm
- **Tyre** : tubular
- **ETRTO size** : 28" tubular
- **Recommended tyre sizes** : 19 to 28 mm

SPOKES

- **Material** : steel
- **Shape** : straight pull, bladed, double butted
- **Color** : black
- **Nipples** : ABS, aluminum, black
- **Count** : front 16, rear 20
- **Lacing** : radial front and rear non-drive side, crossed 2 rear drive side

WHEEL HUB

- **Front and rear bodies** : aluminum
- **Color** : black
- **Front and rear axle material** : aluminum QRM+ FTS-L steel

WHEEL WEIGHTS

Wheel weight 725