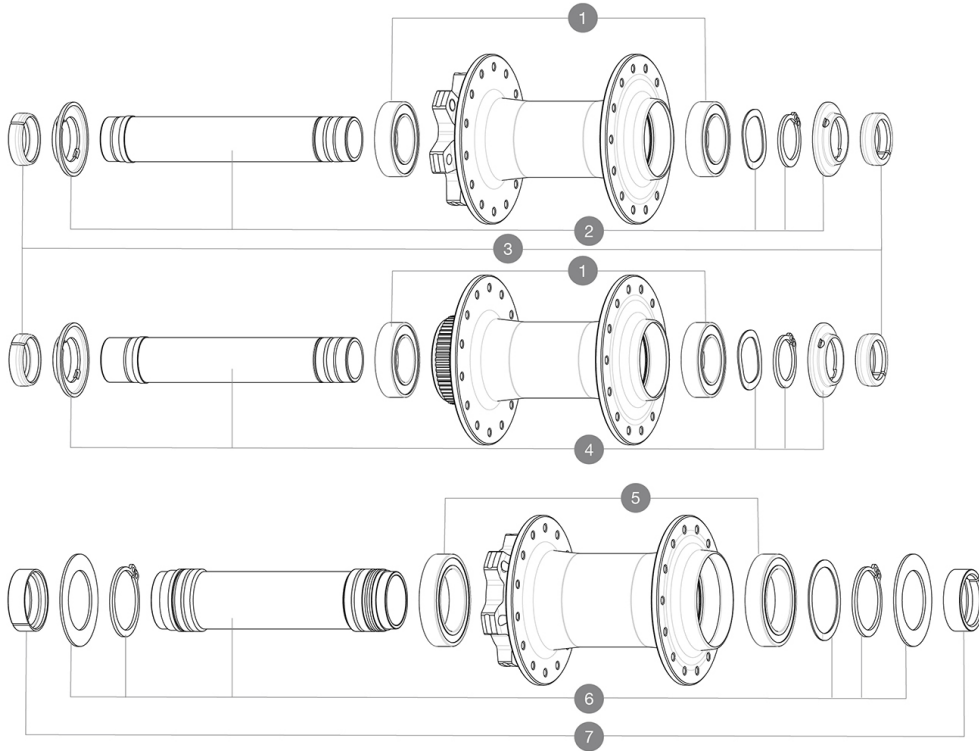


## REFERENCES WHEELS



### HUB SHELLS

1	V2500901	KIT BEARINGS 18x30x7 + WAVED WASHER + CLIP
2	V2372401	KIT 110mm AXLE QRM AUTO MTB > 2019
4	V2375601	Kit 110mm axle QRM auto MTB from 2019 DCL
5	M40179	FRONT BEARING 25x37x7 20mm AXLE
6	V2373701	KIT 20x110mm BOOST AXLE QRM AUTO MTB > 2019

### ADAPTERS

3	V2372501	15mm MTB Axle Cap QRM Auto From 2019
7	V2680401	20x110 BOOST Front Adapter MTB wheels

# MAVIC MX801 CLASSIC DISC

## COMPATIBILITY

Rear axle: 12mm thru axle, convertible to Quick Release with optional adapters and axle replacement	
Maximum spoke width: 2,4mm	
Rear axle: 12x148 Boost thru axle	
Front axle: 15x110 Boost thru axle	
Freewheel: Shimano HG9, XD or Micro Spline	

## Specifications

### WHEEL HUB

- **Front and rear bodies** : aluminum
  - **Axle material** : aluminum
- Instant Drive 360 freewheel technology  
QRM Auto bearing preload technology
- **Axles** : Front 15X110 Boost ; Rear 12X148 Boost

### VERSIONS

- **Disc standard** : 6 Bolts or Center Lock<sup>®</sup>
  - **Hub width** : Boost only (front 110, rear 148)
- 28 & 32 holes

### WHEEL WEIGHTS