

**MAVIC** **E-SPEEDCITY 1 650B**

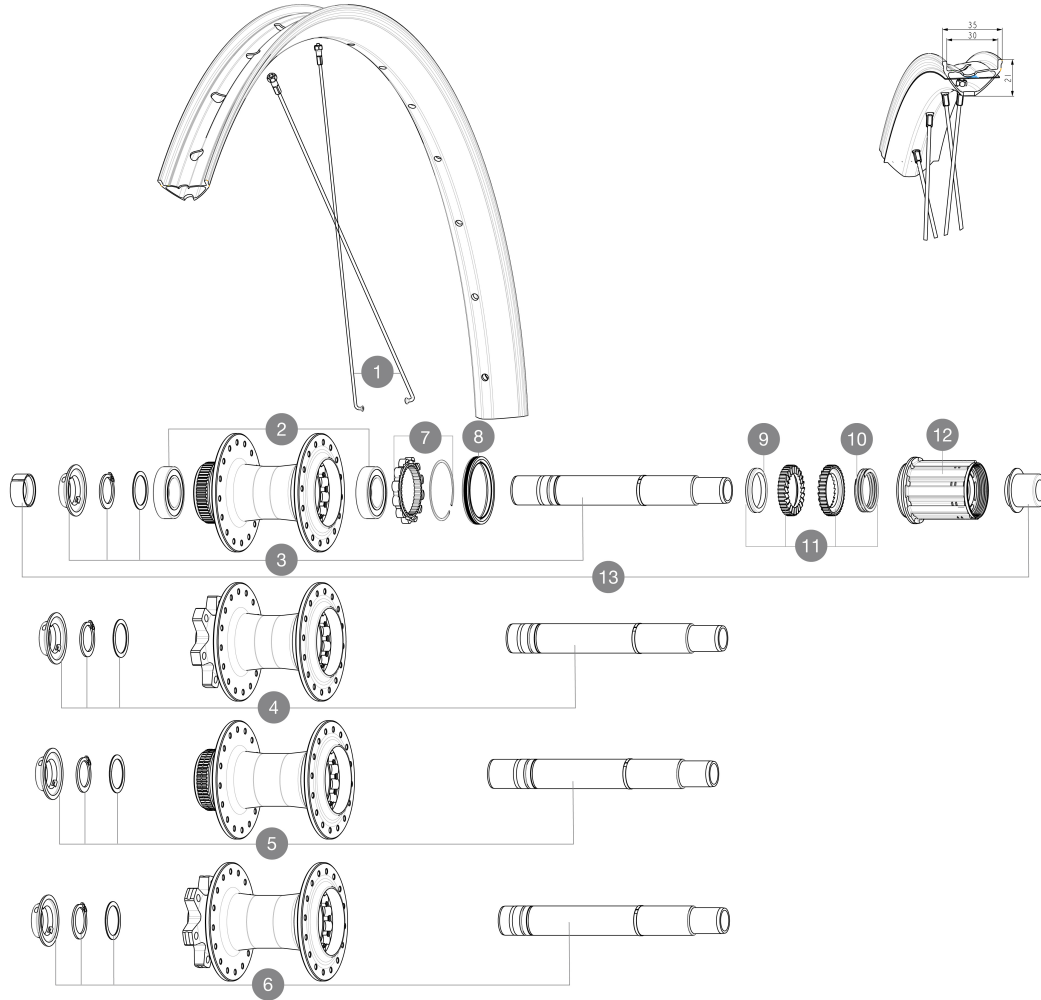
ASTM CATEGORY 2 : road and offroad with jumps less than 15cm

Minimum tyre size: width 52mm - pressure max. 2.35Bar/34PSI

Recommended tyre sizes: 50mm to 76mm (2.0" to 3.0")

Maximum tyre size: width 125mm - pressure max. 1.25Bar/18PSI

For a longer longevity of the wheel, Mavic recommends that the total weight supported by the wheels doesn't exceed 180kg, E-bike included

**REFERENCES WHEELS****SPOKES**

<b>1</b>	V00062531	Kit 16ft/rr Jbent bk rd spk275 27,5"+np
----------	-----------	---

**HUB SHELLS**

<b>2</b>	M40076	HUB BEARINGS 17x30x7 6903 x 2
<b>3</b>	V2373401	KIT ID360 135/142 DCL L1 AXLE WITH CLIP
<b>4</b>	V2372101	KIT ID360 135/142 D6T AXLE WITH CLIP
<b>5</b>	V2375701	Kit ID360 148 DCL axle with circlip
<b>6</b>	V2372201	KIT ID360 148 D6T AXLE WITH CLIP
<b>7</b>	V2252701	KIT ID360 INSERT SHAPED EAR LOBE > 2017
<b>8</b>	V00063631	Kit ID360 seal version 2 (larger)
<b>9</b>	V2375401	KIT ID360 MTB 24T 3 NOISE REDUCING PADS
<b>10</b>	V2372901	KIT 3 ID360 MTB SPRINGS
<b>11</b>	V2375201	KIT ID360 24 TEETH 2 RATCHET + MTB SPRING + PAD (specific)
<b>12</b>	V3430101	HG11 Freewheel Body ID360

**OPTIONS**

V2373001	KIT ADJUST. SYSTEM QRM AUTO ID360 for 17x30x7 bearing
----------	---

**ADAPTERS**

<b>13</b>	V2510701	ID360V2RrAxleAdapt12x142/148
	V2510901	ID360 EVO RrAxleAdpt12x135/150
	V2510801	ID360 V2 RrAxleAdapt9x135

**MAVIC** **E-SPEEDCITY 1 650B****DELIVERED WITH**

User guide	
Pre-installed tubeless rim tape	
Rear QR adapters (non-boost wheel)	
Rear QR adapters (non-boost wheel)	
User guide	
User guide	
Pre-installed tubeless rim tape	

**COMPATIBILITY**

Freewheel: Shimano/Sram, convertible to Campagnolo ED11, N3W and XD-R with optional driver bodies	
Front axle: 12mm thru axle, easily convertible to quick release with optional adapters. Convertible to 15mm with complete axle replacement	
Rear axle: 12mm thru axle, convertible to Quick Release with optional adapters and axle replacement	
Freewheel body: convertible SRAM XD road (kit V2580101 sold separately)	
Freewheel body: convertible SRAM XD road (kit V2580101 sold separately)	
Freewheel body: convertible SHIMANO HG light road (kit V3850101 sold separately)	
Freewheel body: convertible SHIMANO HG light road (kit V3850101 sold separately)	
Freewheel body: convertible SHIMANO MS (kit V3990101 sold separately)	
Freewheel body: convertible SHIMANO MS (kit V3990101 sold separately)	
Front axle: 12mm thru axle, easily convertible to quick release with optional adapters. Convertible to 15mm with complete axle replacement	
Front axle: 12mm thru axle, easily convertible to quick release with optional adapters. Convertible to 15mm with complete axle replacement	
Freewheel body: convertible CAMPAGNOLO N3W (kit V4270101 sold separately)	
Freewheel body: convertible CAMPAGNOLO N3W (kit V4270101 sold separately)	
ID360 Shimano Micro Spline alloy freewheel body (V3990101)	
ID360 Sram XD freewheel body (V3740101)	
Rear axle: for fixing nuts only (included), M9x1 thread	
Rear axle: for fixing nuts only (included), M9x1 thread	
ID360 Shimano Micro Spline alloy freewheel body (V3990101)	