

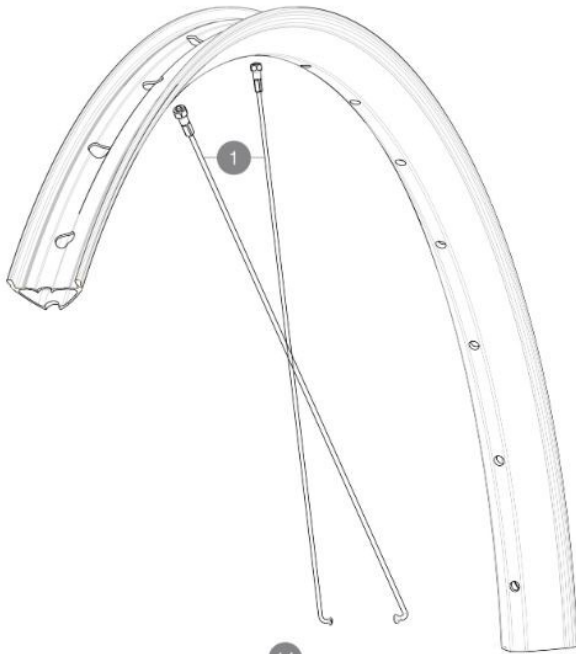
**MAVIC** **E-CROSSRIDE 1 29****REFERENCES WHEELS**

ASTM CATEGORY 3 : CROSS COUNTRY

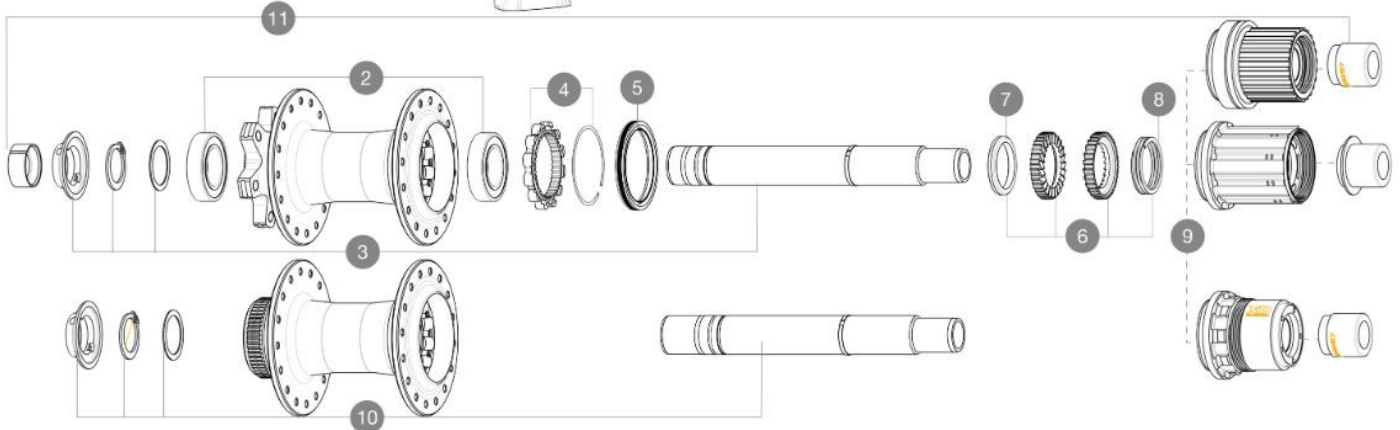
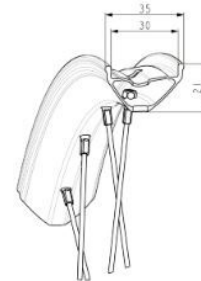
For a longer longevity of the wheel, Mavic recommends that the total weight supported by the wheels doesn't exceed 150kg, bike included

Minimum tyre size: width 52mm - pressure max. 2.35Bar/34PSI

Maximum tyre size: width 125mm - pressure max. 1.25Bar/18PSI



Specifications	Maxi target
Frontal run out	0,5mm
Lateral run out	0,5mm
Centring	1,0mm (2x0,5)
Tension daN Disc side	106 > 137

**SPOKES**

1	V00062431	Kit 16 ft/rr Jbent bk rd spk 293 29'+np
---	-----------	---

**HUB SHELLS**

2	M40076	HUB BEARINGS 17x30x7 6903 x 2
3	V2372201	KIT ID360 148 D6T AXLE WITH CLIP
4	V2252701	KIT ID360 INSERT SHAPED EAR LOBE > 2017
5	V2373001	KIT ADJUST. SYSTEM QRM AUTO ID360 for 17x30x7 bearing
6	V2375201	KIT ID360 24 TEETH 2 RATCHET + MTB SPRING + PAD (specific)
7	V2375401	KIT ID360 MTB 24T 3 NOISE REDUCING PADS
8	V2372901	KIT 3 ID360 MTB SPRINGS
9	V3990101	MicroSpline MTB Freewheel Body ID360
9	V3780101	HG9 Alloy MTB Freewheel Body ID360
9	V3740101	XD MTB Freewheel Body ID360
10	V2375701	Kit ID360 148 DCL axle with circlip
	V00063631	Kit ID360 seal version 2 (larger)

**ADAPTERS**

11	V2510701	ID360V2RrAxleAdapt12x142/148
	V2510801	ID360 V2 RrAxleAdapt9x135

**MAVIC** **E-CROSSRIDE 1 29****DELIVERED WITH**

User guide	
Pre-installed tubeless rim tape	
User guide	
Pre-installed tubeless rim tape	

**COMPATIBILITY**

Freewheel body: convertible SHIMANO HG MTB steel (kit V3790101 sold separately)	
Freewheel body: convertible SHIMANO HG MTB steel (kit V3790101 sold separately)	
Rear axle: 12mm thru axle, convertible to Quick Release with adapters (delivered with non-boost wheel)	

**Specifications****RIMS**

- **Material** : S6000 Aluminum
- **Material** : S6000 Aluminum
- **Height** : 21 mm
- **Height** : 21 mm
- **Joint** : sleeved
- **Joint** : sleeved
- **Internal width** : 30 mm
- **Internal width** : 30 mm
- **Drilling** : traditional (front/rear 32 holes)
- **Drilling** : traditional (front/rear 32 holes)

Disc brake specific profile

Disc brake specific profile

E-Bike specific rim profile

E-Bike specific rim profile

- **ETRTO size 29"** : 622x30TSS

- **ETRTO size 29"** : 622x30TSS

- **Tire** : clincher

- **Tire** : clincher

**SPOKES**

- **Material** : steel
- **Material** : steel

- **Count** : 20 front and rear

- **Count** : 20 front and rear

- **Rear axle** : 12mm thru axle, convertible to Quick

Release with adapters (delivered with non-boost wheel)

12mm front hub cap (V2680501)

**WHEEL HUB**

- **Body** : aluminum
- **Body** : aluminum
- **Body design** : CLASSIC
- **Body design** : CLASSIC
- **Disc standard** : 6 Bolts or Center Lock<sup>®</sup>
- **Disc standard** : 6 Bolts or Center Lock<sup>®</sup>
- **Axle material** : aluminum
- **Axle material** : aluminum
- **Rear body** : aluminum
- **Rear body** : aluminum
- **Axles** : Front 15x110 (Boost) or 15x100 ; Rear 12x148 (Boost) or 12x142
- **Axles** : Front 15x110 (Boost) or 15x100 ; Rear 12x148 (Boost) or 12x142
- **Freewheel** : Shimano HG MTB / Shimano MS / Sram XD MTB / Single Speed
- **Freewheel** : Shimano HG MTB / Shimano MS / Sram XD MTB / Single Speed
- **Freewheel** : FTS-L steel
- **Freewheel** : FTS-L steel

**WHEEL WEIGHTS**