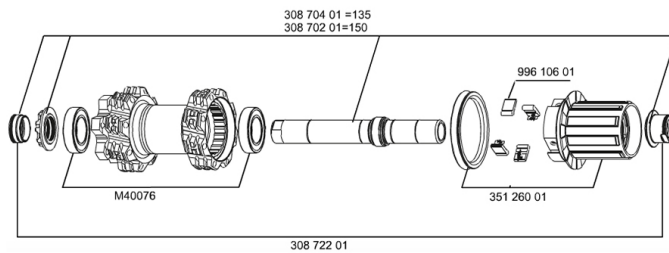
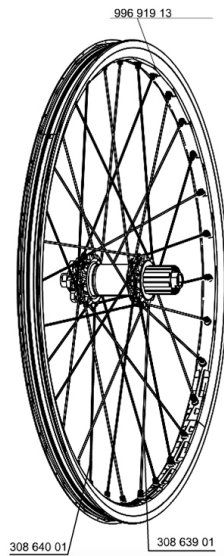


REFERENCES WHEELS

128081	DEEMAX ULTIMATE 012 RR9/12x135	129523	DEEMAX ULTIMATE 012 PR12x150
128082	DEEMAX ULTIMATE 012 PR9/12x135	129522	DEEMAX ULTIMATE 012 RR12x150



RIMS



&NBSP;:

99691913	KIT REAR RIM DEEMAX ULTIMATE YELLOW
----------	-------------------------------------

SPOKES

30864001	KIT 16 NDS M7/7 DEEMAX ULTIMATE 12 SPK 268mm
30863901	KIT 16 DS M7/7 DEEMAX ULTIMATE 12 SPK 266mm

HUB SHELLS

35126001	ITS-4 FREEWHEEL BODY + SEAL 2013 (NO PAWLS)
30870201	REAR AXLE KIT ITS4 150mm 2012
99610601	PAWLS KIT FOR ITS-4 (OR TS-2)
30870401	REAR QRM + AXLE KIT ITS4 135mm from 2012
M40076	HUB BEARINGS 17x30x7 6903 x 2

ADAPTERS

30872201	FRAME SUPPORT ITS-4 135mm REAR AXLE > 2012
----------	--

MAVIC Deemax Ultimate

DELIVERED WITH

UST valve and accessories	
UST valve and accessories	
Rear QR adapters	
Rear QR adapters	
Multifonction adjustment wrench	
Multifonction adjustment wrench	
User guide	
User guide	

Specifications

RIMS

- **Material** : Mxstal
- **Material** : Mxstal
- **Color** : yellow
- **Joint** : SUP
- **Joint** : SUP
- **Drilling** : Fore
- **Drilling** : Fore

Disc brake specific profile

- **Weight reduction** : ISM with central spine
- **Valve hole diameter** : 6.5 mm

Disc brake specific profile

- **Weight reduction** : ISM with central spine
- **Tyre** : UST Tubeless and tubetype
- **Valve hole diameter** : 6.5 mm
- **Internal width** : 21 mm
- **Graphisms** : hot stamped
- **ETRTO size** : 559x21C
- **Tyre** : UST Tubeless and tubetype
- **Internal width** : 21 mm
- **ETRTO size** : 559x21C
- **Recommended tyre sizes** : 2.0 to 2.5
- **Recommended tyre sizes** : 2.0 to 2.5

SPOKES

- **Material** : steel
- **Material** : steel
- **Shape** : straight pull, bladed
- **Shape** : straight pull, bladed
- **Color** : black
- **Nipples** : integrated M7 aluminum with brake rings
- **Nipples** : integrated M7 aluminum with brake rings
- **Count** : front 28, rear 32
- **Lacing** : front and rear crossed 3
- **Count** : front 28, rear 32
- **Lacing** : front and rear crossed 3

WHEEL HUB

- **Front and rear bodies** : aluminum
- **Front and rear bodies** : aluminum with Spoke Retention System (SRS special machining to avoid spoke ejection)
- **Front and rear axle material** : aluminum
- **Color** : yellow
- **QRM+**
- **Front and rear axle material** : aluminum
- **ITS-4 alloy**
- **QRM+**
- **ITS-4 alloy**

WHEEL WEIGHTS

Wheel weight 1055