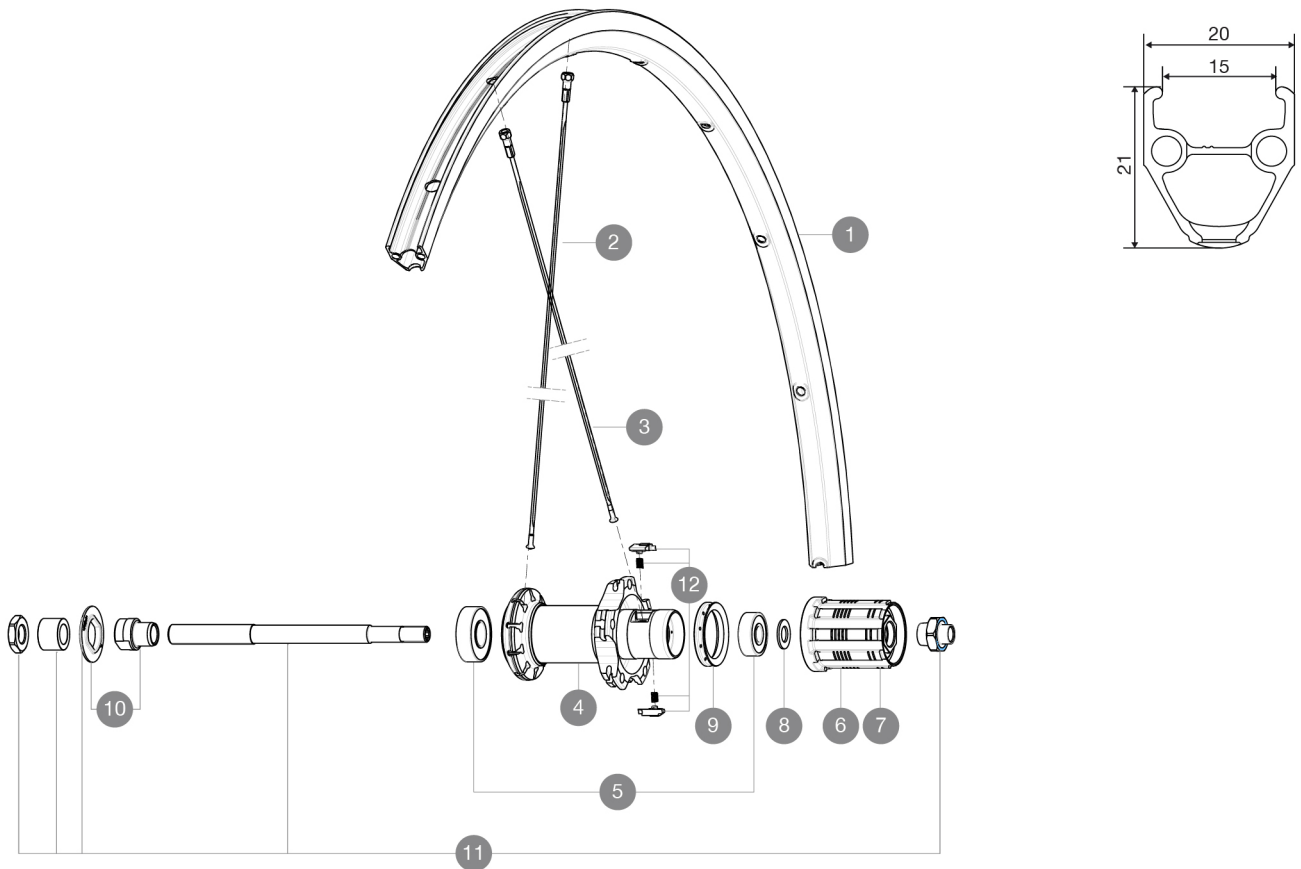


## REFERENCES WHEELS

R16701 Aksium One Rr



### RIMS



VALVE HOLE  $\varnothing$  (MM): 6.5 :

1	V2290915	KIT FRONT/REAR RIM AKSIUM ONE
---	----------	-------------------------------

### SPOKES

2	V4160101	Kit 10 stainless spokes 285 Ft Ksyrium Equipe S/Ft & NDS Aks
2	10844901	KIT 10 FT KSYRIUM EQ S/FT+NDS AKSIUM SPK 285mm - while stock
3	10845001	KIT 10 DS AKSIUM STEEL AERO SPOKES 299mm

### HUB SHELLS

4	N/A	HUB BODY
5	M40660	REAR HUB 608+6001 BEARINGS
6	M40591	FTSL FREEWHEEL BODY ED10
7	M40592	FTSL FREEWHEEL BODY M10
8	M40067	INTERNAL FREEWHEEL SPACER FTSL/FTSX
9	99500001	FTSL/FTSX FREEHUB BODY SEAL
10	99603801	SHORT EXPENSIBLE BEARING SUPPORTS > 2008
11	99603901	REAR AXLE QRM ROAD 2008

**MAVIC** *Aksium One***DELIVERED WITH**

BR101 quick releases	
Rim tape	
User guide	

**Specifications****RIMS**

- **Material** : S6000 Aluminum
- **Height** : 24 mm
- **Joint** : pinned
- **Drilling** : traditional with H2 reinforcement
- **Brake track** : UB Control
- **Valve hole diameter** : 6.5 mm
- **Tyre** : clincher
- **ETRTO size** : 622x15C
- **Recommended tyre sizes** : 19 to 32 mm

**SPOKES**

- **Material** : steel
- **Shape** : straight pull, bladed
- **Nipples** : brass, ABS
- **Count** : 20 front and rear
- **Lacing** : radial front and rear non-drive side, crossed 2 rear drive side

**WHEEL HUB**

- **Front and rear bodies** : aluminum
- **Axle material** : steel
- Sealed cartridge bearings
- **Freewheel** : FTS-L steel

**WHEEL WEIGHTS**

Wheel weight 980