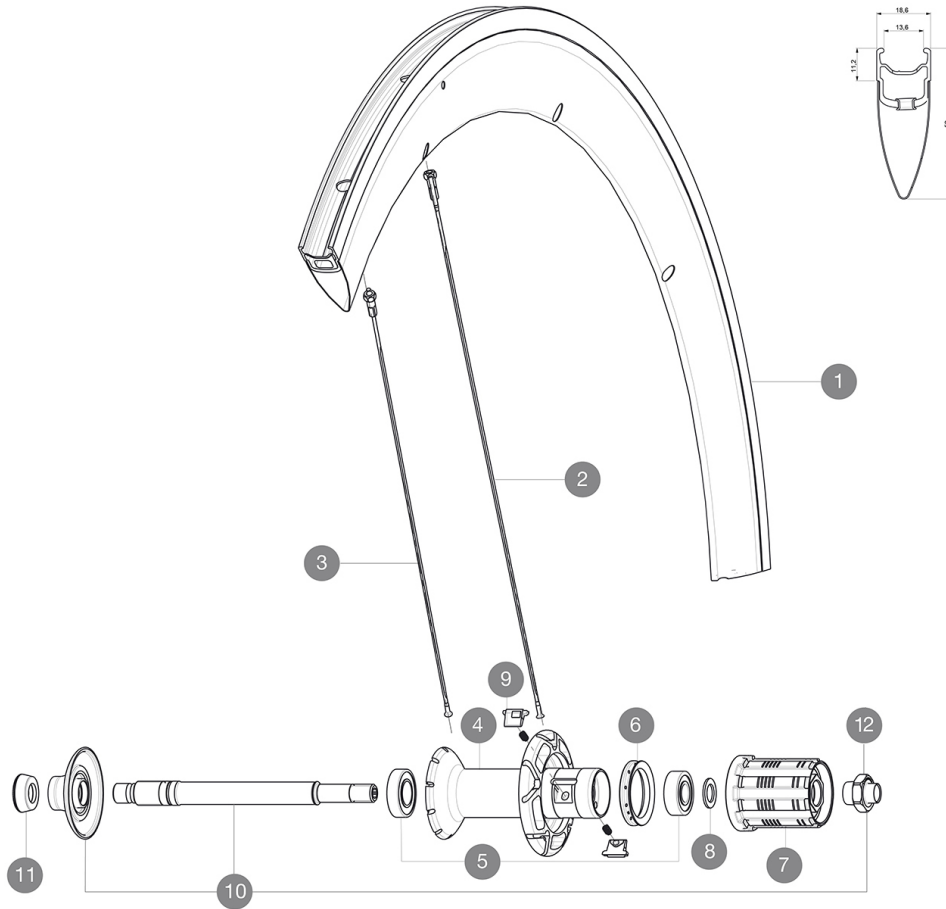


MAVIC *Cosmic Pro Carbon Exalith*ASTM CATEGORY 1 : road only
Recommended weight limit : 120kg**REFERENCES WHEELS**

R57901 CosProCarbExalitRr

**RIMS**VALVE HOLE \bar{A} (MM): 6,5 :

| | | |
|---|----------|--|
| 1 | V2404613 | KIT REAR RIM COSMIC PRO CARBON EXALITH - while stock last |
| 1 | V4091713 | KIT REAR RIM COSMIC CARBON SLE/COSMIC PRO CARBON EXALITH V s |

SPOKES

| | | |
|---|----------|--|
| 2 | 32979201 | 10 BLK FR/NDRV SPOKES CC SLE CLINCHER 2013 288mm - while sto |
| 2 | 32976801 | KIT 10 AERO FT/NDS CXR 60 C BLK SPOKE 289mm |
| 3 | 32979101 | KIT 10 DS COSMIC CARB SLE C 13 BLK SPK 286mm |

HUB SHELLS

| | | |
|----|----------|--|
| 4 | N/A | HUB BODY |
| 5 | 33000001 | REAR HUB B9+6901 BEARINGS 2013 |
| 6 | 99500001 | FTSL/FTSX FREEHUB BODY SEAL |
| 7 | 30871201 | FTS-L ROAD FREEWHEEL BODY ED11 8/9 compatible |
| 7 | 30871101 | FTS-L ROAD FREEWHEEL BODY HG11 8/9 compatible |
| 8 | 30872801 | SET OF 3 INTERNAL SILVER SPACERS 9mm FTS-L |
| 9 | M40578 | FTSL PAWLS KIT (ROAD WHEELS) |
| 10 | V2250301 | KIT REAR AXLE AERO HUB CXR/CC40/CC SLS/CC SLE/COSMIC PRO CAR |
| 12 | V2373101 | KIT NUT FOR ROAD ALLOY THROUGH AXLE 9mm |

ADAPTERS

| | | |
|----|----------|---|
| 11 | 35117301 | FT/RR FORK REST R-SYS/CC ULTIMATE > 2013/KSY PRO CARB T |
|----|----------|---|

MAVIC *Cosmic Pro Carbon Exalith***DELIVERED WITH**

| | |
|---------------------------------|--|
| BR601 quick releases | |
| Rim tape | |
| Exalith brake pads | |
| Multifonction adjustment wrench | |
| User guide | |

Specifications**RIMS**

- **Material** : Maxtal and 12K carbon fiber
- **Height** : 52 mm
- **Joint** : SUP
- **Drilling** : traditional
- **Brake track** : Exalith 2
- **Weight reduction** : ISM
- **Valve hole diameter** : 6.5 mm
- **Tyre** : clincher
- **ETRTO size** : 622x13C
- **Recommended tyre sizes** : 21 to 28 mm

SPOKES

- **Material** : steel
- **Shape** : straight pull, bladed, double butted
- **Nipples** : front aluminum, rear brass, ABS
- **Count** : front 16, rear 20
- **Lacing** : radial front and rear non-drive side, crossed 2 rear drive side

WHEEL HUB

- **Front and rear bodies** : aluminum
 - **Axle material** : aluminum
- Adjustable sealed cartridge bearings
- **Freewheel** : FTS-L steel

WHEEL WEIGHTS

Wheel weight 890