

MAVIC **E-DEEMAX S 30 29**

ASTM CATEGORY 5 : GRAVITY RIDING FOCUSED ON THE DESCENT

Maximum tyre pressure: 2.95bar/43PSI with a 52mm tyre - 1.55bar/22PSI with a 125mm tyre

Minimum tyre size: width 52mm - pressure max. 2.95Bar/43PSI

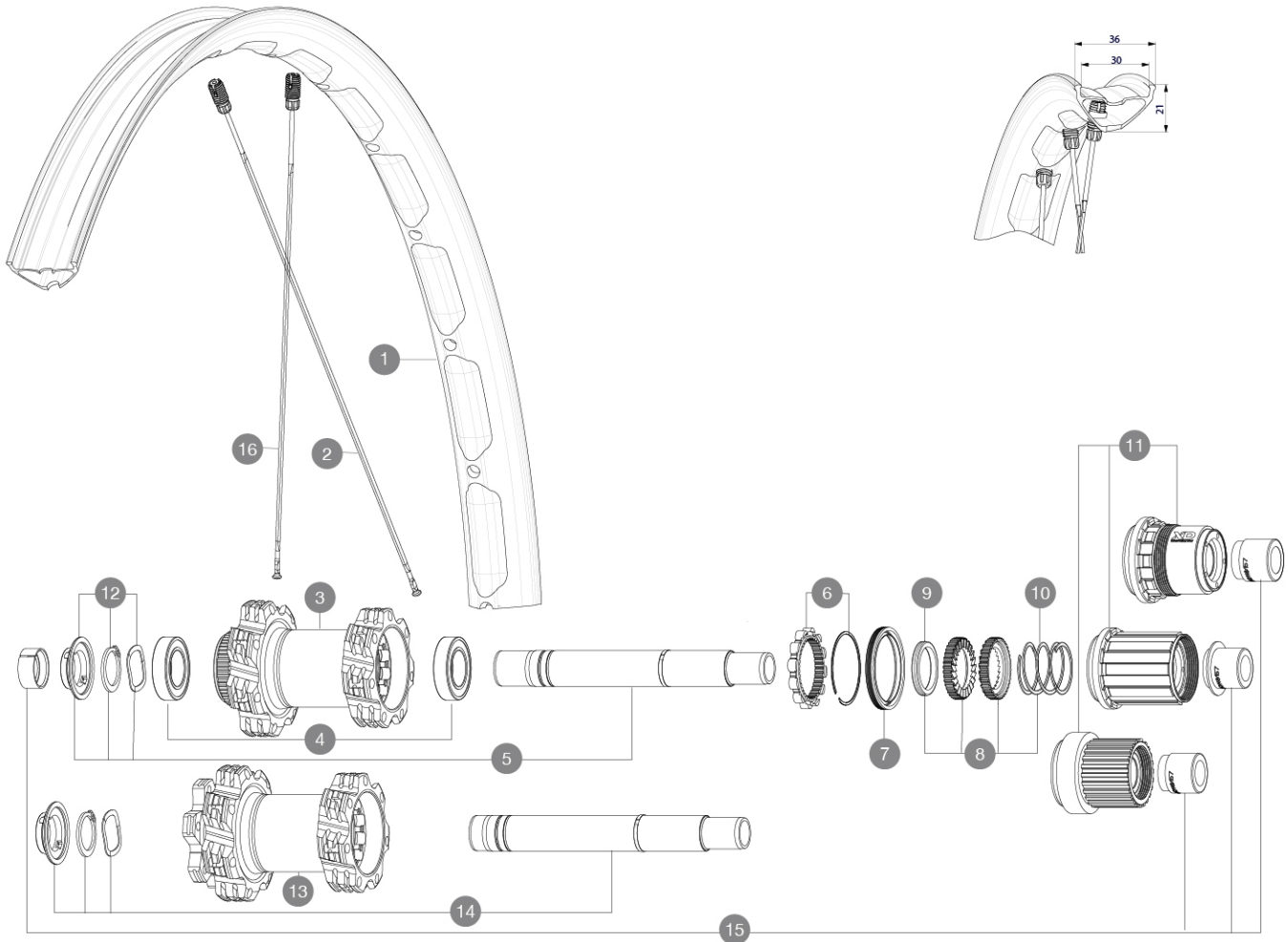
Recommended tyre sizes: 60mm to 76mm (2.35" to 3.0")

For a longer longevity of the wheel, Mavic recommends that the total weight supported by the wheels doesn't exceed 180kg, E-bike included

For a longer longevity of the wheel, Mavic recommends that the total weight supported by the wheels doesn't exceed 180kg, Ebike included

REFERENCES WHEELS

| | | | |
|--------|-----------------------------|--------|-----------------------------|
| R38313 | E-DEEMAX S 30 INT 29 BST XD | R39292 | E-DEEMAX S 30 INT 29 BST HG |
| R38323 | E-DEEMAX S 30 CL 29 BST MS | | |

**RIMS**

&NBSP;:

| | | |
|----------|----------|--|
| 1 | V3766415 | Kit Front/Rear rim eDeemax S 29 |
| | V3750101 | 35mm UST Green Tape for 30mm wide rims |

SPOKES

| | | |
|-----------|----------|---|
| 2 | V2388601 | Kit 14 Rear Drive Side eDeemax S 29" butted spoke 304 M7/7 |
| 16 | V2388701 | Kit 14 Rear Non Drive Side eDeemax S 29" butted spoke 306 M |

HUB SHELLS

| | | |
|-----------|-----------|--|
| 3 | N/A | HUB BODY |
| 4 | M40076 | HUB BEARINGS 17x30x7 6903 x 2 |
| 5 | V2375701 | Kit ID360 148 DCL axle with circlip |
| 6 | V2252701 | KIT ID360 INSERT SHAPED EAR LOBE > 2017 |
| 7 | V00063631 | Kit ID360 seal version 2 (larger) |
| 8 | V2375201 | KIT ID360 24 TEETH 2 RATCHET + MTB SPRING + PAD (specific) |
| 9 | V2375401 | KIT ID360 MTB 24T 3 NOISE REDUCING PADS |
| 10 | V2372901 | KIT 3 ID360 MTB SPRINGS |
| 11 | V3740101 | XD MTB Freewheel Body ID360 |

| | | |
|-----------|----------|---|
| 11 | V3990101 | MicroSpline MTB Freewheel Body ID360 |
| 11 | V3780101 | HG9 Alloy MTB Freewheel Body ID360 |
| 12 | V2373001 | KIT ADJUST. SYSTEM QRM AUTO ID360 for 17x30x7 bearing |
| 13 | N/A | HUB BODY |
| 14 | V2372201 | KIT ID360 148 D6T AXLE WITH CLIP |

OPTIONS

| | |
|----------|---|
| V2372801 | KIT ID360 2x40 TEETH RATCHETS + MTB SPRING + GREASE + PAD |
|----------|---|

ADAPTERS

| | | |
|-----------|----------|------------------------------|
| 15 | V2510701 | ID360V2RrAxleAdapt12x142/148 |
| | V2510801 | ID360 V2 RrAxleAdapt9x135 |

MAVIC E-DEEMAX S 30 29

DELIVERED WITH

| | |
|---|--|
| UST valve and accessories (129 838 01) | |
| UST valve and accessories (129 838 01) | |
| UST valve and accessories (129 838 01) | |
| Multifunction adjustment wrench (delivered with rear wheel) (325 423 01) | |
| Multifunction adjustment wrench (delivered with rear wheel) (325 423 01) | |
| Multifunction adjustment wrench (delivered with rear wheel) (325 423 01) | |
| User guide | |
| 2 replacement spokes with each wheel | |
| 2 replacement spokes with each wheel | |
| 2 replacement spokes with each wheel | |
| Fore adjustment wrench | |
| Fore adjustment wrench | |

COMPATIBILITY

| | |
|---|--|
| Front axle: 15x110 Boost, convertible to 20x110 Boost thru axle with adapters | |
| Front axle: 15x110 Boost, convertible to 20x110 Boost thru axle with adapters | |
| Rear axle adapters: 12x148 convertible to 9x141 (kit V2510801 sold separately) | |
| Freewheel: Shimano HG9, XD or Micro Spline | |
| Freewheel: Shimano HG9, XD or Micro Spline | |
| Rear axle: 12x148 Boost thru axle | |
| Rear axle: 12x148 Boost thru axle | |
| INT 6-bolt disc version front wheel convertible to 20x110 Boost thru axle with optional adapters | |
| Front axle: convertible from 15mm thru axle to Quick Release with adapters (delivered with non-boost wheel) | |
| Front axle: for fixing nuts only (included), M9x1 thread | |

Specifications

RIMS

- **Material** : Mxstal
- **Material** : Mxstal
- **Material** : Mxstal
- **Material** : S6000 Aluminum
- **Material** : S6000 Aluminum
- **Height** : 22 mm

SUP

SUP

- **Internal width** : 30 mm
- **Weight reduction** : ISM
- **Weight reduction** : ISM

E-Bike specific rim profile

E-Bike specific rim profile

- **Drilling** : Fore tapeless tubeless technology (front/rear 28 holes)

- **Tire** : UST Tubeless and tubetype
- **Tire** : UST Tubeless and tubetype

- **Internal width** : 30 mm

- **Internal width** : 30 mm

Disc brake specific profile

Asymmetrical rim design

- **ETRTO size 29"** : 622x30TC

Down Pinch Flat Protection sidewall (minimizes the risk of 5 tire cuts and punctures)

WHEEL HUB

- **Body** : aluminum

Instant Drive 360

QRM Auto

Hub available with 6-bolt or center lock (R) brake rotors

- **Axles** : Front 15X110 Boost ; Rear 12X148 Boost

- **Disc standard** : 6 Bolts or Center Lock

- **Axle material** : aluminum

- **Rear body** : aluminum

- **Axles** : Front 15X110 (Boost) or 15x100 ; Rear 12X148 (Boost) or 12x142

- **Freewheel** : Shimano HG MTB / Shimano MS / Sram XD MTB

- **Freewheel** : FTS-L steel

Hub available with 6-bolt or center lock (R) brake rotors

- **Axles** : Front 15X110 Boost ; Rear 12X148 Boost

24 teeth ratchet

Instant Drive 360

QRM Auto

VERSIONS

- **Disc standard** : 6 Bolts or Center Lock (R)

- **Disc standard** : 6 Bolts or Center Lock (R)

- **Hub width** : Boost only front 110 ; rear 148

WHEEL WEIGHTS

1110