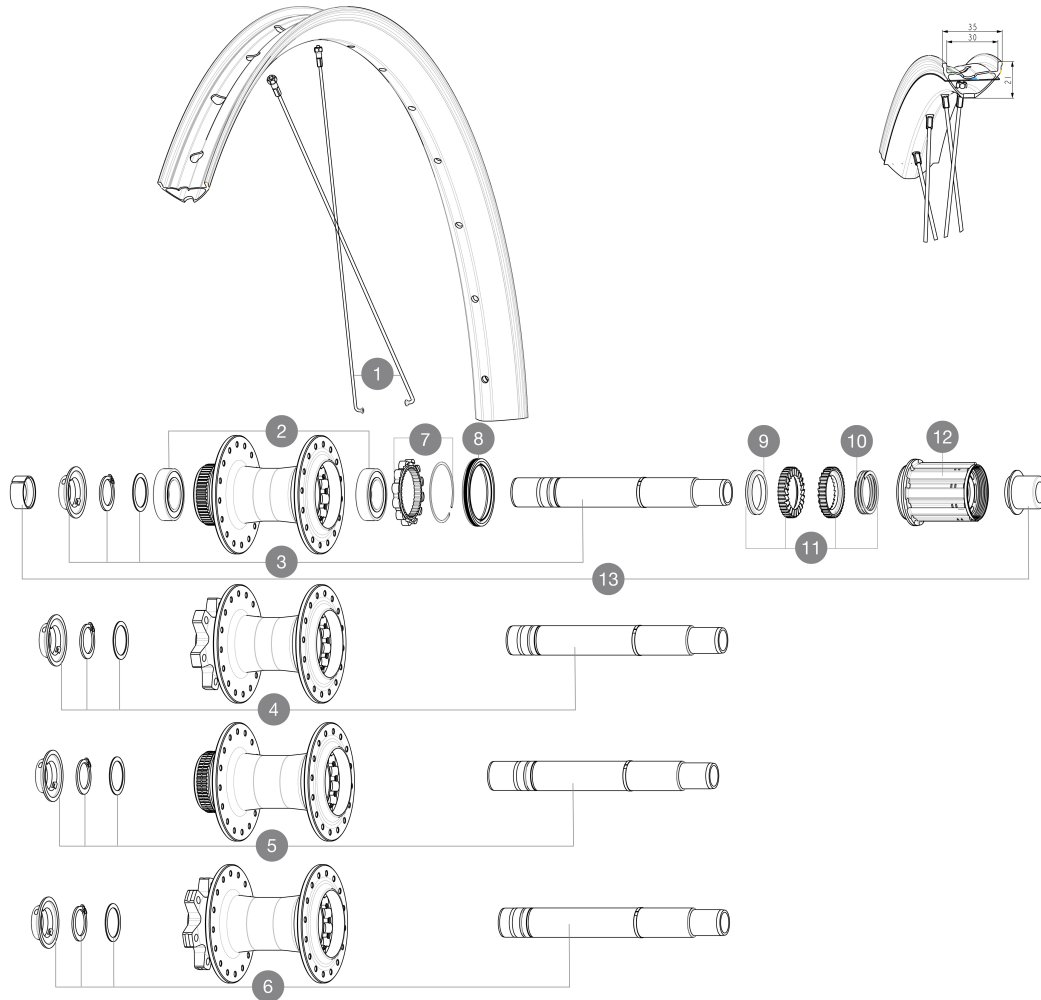


MAVIC **E-SPEEDCITY 1 650B**

ASTM CATEGORY 2 : road and offroad with jumps less than 15cm
 Mindestgröße des Reifens: Breite 52mm - max. Druck 2.35Bar/34PSI
 Recommended tire sizes: 50mm to 76mm (2.0" to 3.0")

Maximale Reifengröße: Breite 125mm - max. Druck 1.25Bar/18PSI

For a longer longevity of the wheel, Mavic recommends that the total weight supported by the wheels doesn't exceed 180kg, E-bike included

REFERENZEN RÄDER**SPOKES**

1	V00062531	Kit 16ft/rr Jbent bk rd spk275 27,5"+np
----------	-----------	---

HUB SHELLS

2	M40076	HUB BEARINGS 17x30x7 6903 x 2
3	V2373401	KIT ID360 135/142 DCL L1 AXLE WITH CLIP
4	V2372101	KIT ID360 135/142 D6T AXLE WITH CLIP
5	V2375701	Kit ID360 148 DCL axle with circlip
6	V2372201	KIT ID360 148 D6T AXLE WITH CLIP
7	V2252701	KIT ID360 INSERT SHAPED EAR LOBE > 2017
8	V00063631	Kit ID360 seal version 2 (larger)
9	V2375401	KIT ID360 MTB 24T 3 NOISE REDUCING PADS
10	V2372901	KIT 3 ID360 MTB SPRINGS
11	V2375201	KIT ID360 24 TEETH 2 RATCHET + MTB SPRING + PAD (specific)
12	V3430101	HG11 Freewheel Body ID360

OPTIONS

V2373001	KIT ADJUST. SYSTEM QRM AUTO ID360 for 17x30x7 bearing
----------	---

ADAPTERS

13	V2510701	ID360 EVO REAR AXLE ADAPTERS 12x142mm DCL & D6T
	V2510801	ID360 EVO REAR AXLE ADAPTERS 9x135mm DCL & D6T
	V2510901	ID360 EVO REAR AXLE ADAPTERS 12x135mm DCL & D6T

MAVIC E-SPEEDCITY 1 650B

GELIEFERT MIT

User guide	
Tubeless-Felgenband	
Kassettenunterlegscheibe M9 nicht am Hinterrad montiert	
Kassettenunterlegscheibe M9 nicht am Hinterrad montiert	
User guide	
User guide	
Tubeless-Felgenband	

COMPATIBILITY

Freewheel: Shimano/Sram, convertible to Campagnolo ED11, N3W and XD-R with optional driver bodies	
Front axle: 12mm thru axle, easily convertible to quick release with optional adapters. Convertible to 15mm with complete axle replacement	
Freilaufkörper: SRAM XD Straßene-Konverter (Kit V2580101 separat erhältlich)	
Freilaufkörper: SRAM XD Straßene-Konverter (Kit V2580101 separat erhältlich)	
Rear axle: 12mm thru axle, convertible to Quick Release with optional adapters and axle replacement	
Freilaufkörper: SHIMANO HG light Straßene-Konverter (Kit V3850101 separat erhältlich)	
Freilaufkörper: SHIMANO HG light Straßene-Konverter (Kit V3850101 separat erhältlich)	
Freilaufkörper: SHIMANO MS-Konverter (Kit V3990101 separat erhältlich)	
Freilaufkörper: SHIMANO MS-Konverter (Kit V3990101 separat erhältlich)	
Front axle: 12mm thru axle, easily convertible to quick release with optional adapters. Convertible to 15mm with complete axle replacement	
Front axle: 12mm thru axle, easily convertible to quick release with optional adapters. Convertible to 15mm with complete axle replacement	
Freilaufkörper: CAMPAGNOLO N3W-Konverter (Kit V4270101 separat erhältlich)	
Freilaufkörper: CAMPAGNOLO N3W-Konverter (Kit V4270101 separat erhältlich)	
ID360 Shimano Micro Spline alloy freewheel body (V3990101)	
Instant Drive 360-Freilaufkörper für Sram XD-Ritzelkassetten (V3740101)	
HR-Achse: nur 1/4r Schraubmuttern (im Lieferumfang enthalten), M10x1-Gewinde	
Rear axle: 12mm thru axle, convertible to Quick Release with adapters (delivered with non-boost wheel)	
Instant Drive 360-Freilaufkörper für Sram XD-Ritzelkassetten (V3740101)	