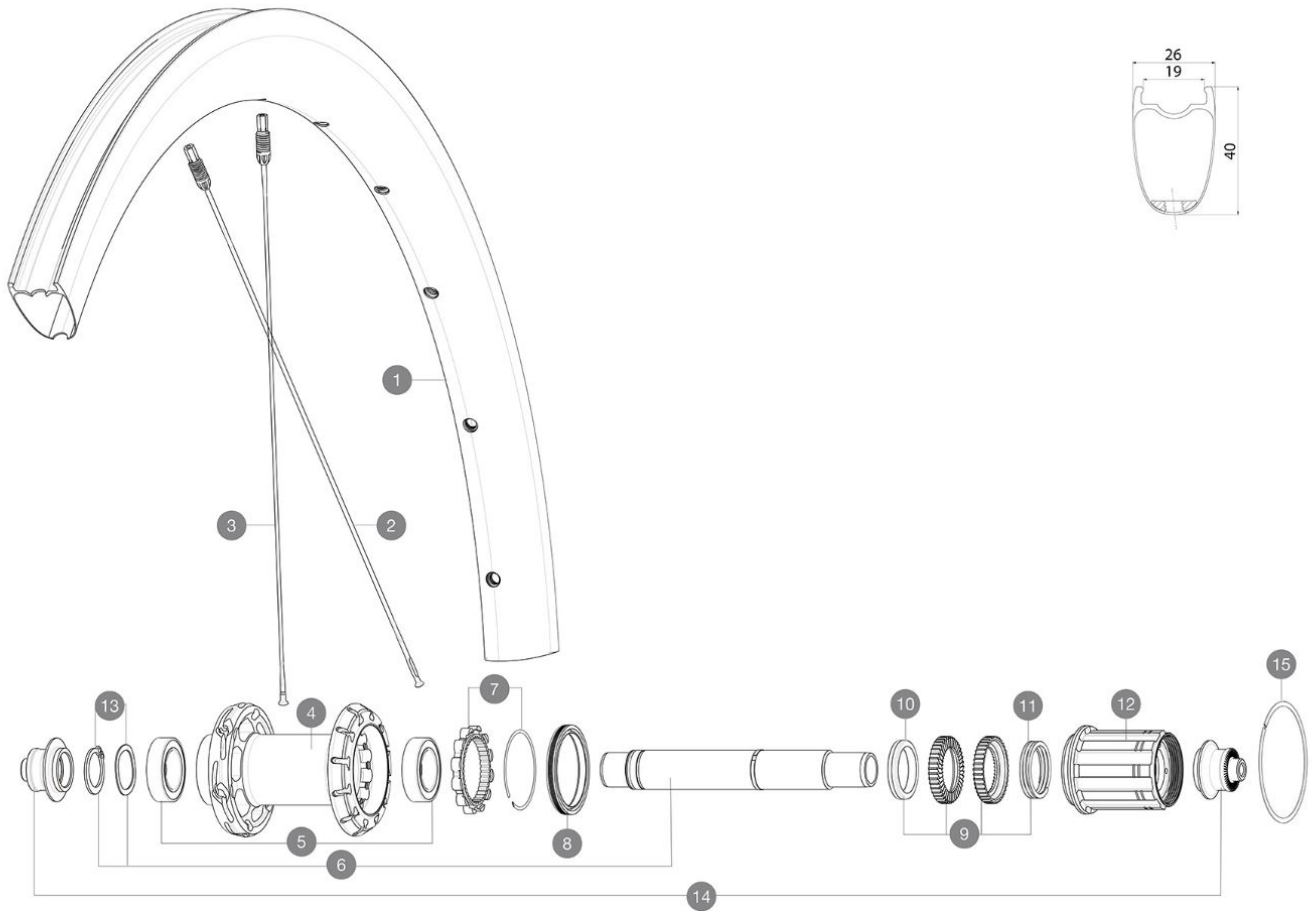


ASTM CATEGORY 1 : road only

REFERENZEN RÄDER



RIMS



&NBSP;:

1	V00063109	Kit Rear rim Cosmic SLR40 Ltd
---	-----------	-------------------------------

SPOKES

2	V3669401	Kit 12 DS Cosmic SLR40 aero ss spk266 M6
3	V3669301	Kit 12 NDS Cosmic SLR40 aero ss spk285M6

HUB SHELLS

4	N/A	NABENKÖRPER
5	V2560401	KIT ID360 2 BEARINGS 17x28x7 + CIRCLIP + WAVED WASHER (QRM A
6	V2252801	KIT ID360 UB REAR WHEEL AXLE WITH CIRCLIP/WAVE WASHER
7	V2252701	KIT ID360 INSERT SHAPED EAR LOBE > 2017
8	V00063631	Kit ID360 seal version 2 (larger)
9	V2251701	ID360 2 RATCHETS + SPRING + GREASE
10	V2500501	Kit 3 ID360 pad for noise reduction
11	V2251801	KIT 3 ID360 ROAD SPRINGS
12	V3430101	HG11 Freewheel Body ID360
13	V2560501	KIT ADJUST. SYSTEM QRM AUTO ID360 for 17x28x7 bearing
15	V2252201	KIT 2 REAR HUB RETENTION RINGS 48mm

ADAPTERS

14	V2253101	KIT REAR AXLE ADAPTOR QUICK RELEASE ID360
----	----------	---

MAVIC **COSMIC SLR 40 LTD****GELIEFERT MIT**

BR301 quick releases (V24 501 01 frt, V24 502 01 rear)	
Carbon brake pads (V24 603 01 Shimano/Sram, V24 604 01 Campagnolo)	
UST valve and accessories (129 838 01)	
User guide	

COMPATIBILITY

Freewheel: Shimano/Sram, convertible to Campagnolo ED11, N3W and XD-R with optional driver bodies	
---	--

Specifications**FELGEN**

- **Material** : 100% carbon fiber
 - **Height** : 40 mm
 - **Valve hole diameter** : 6.5 mm
 - **Tire** : UST Tubeless and tubetype
 - **Internal width** : 19 mm
 - **ETRTO size** : 622x19TC
- Fore Carbon tapeless tubeless technology
UST Tubeless Ready

SPEICHEN

- **Material** : steel
 - **Shape** : straight pull, elliptical aero, double butted (patented)
 - **Nipples** : Fore integrated aluminum
 - **Count** : front 18, rear 24
 - **Lacing** : front radial, rear Isopulse
- Isopulse lacing design

RADNABE

- **Front and rear bodies** : aluminum
 - **Axle material** : aluminum
- Instant Drive 360 freewheel technology
QRM Auto bearing preload technology

VERSIONS

- **Freewheel** : Shimano/Sram

RADGEWICHTE

750