

MAVIC **E-SPEEDCITY 1 650B**

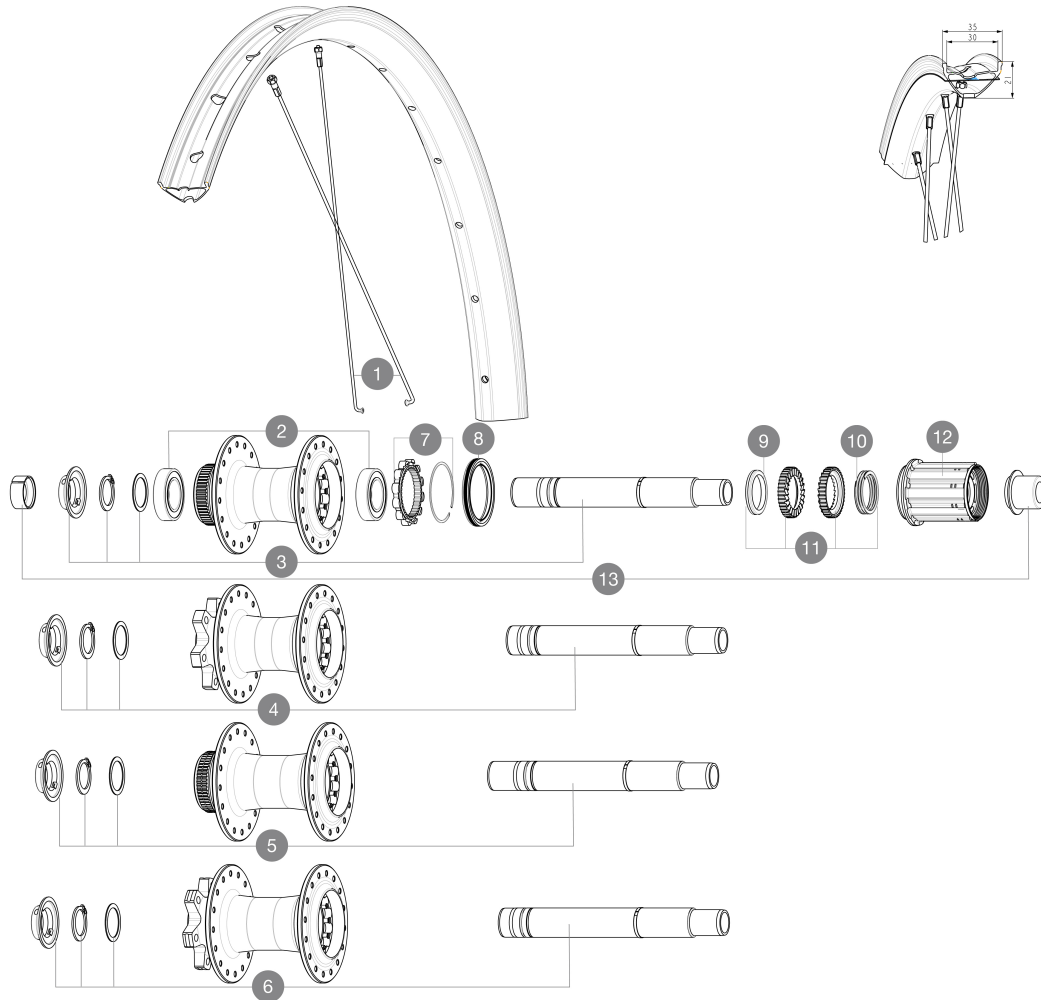
ASTM CATEGORY 2 : road and offroad with jumps less than 15cm

Misura minima del pneumatico: larghezza 52 mm - pressione massima 2,35 Bar/34 PSI

Recommended tire sizes: 50mm to 76mm (2.0" to 3.0")

Misura massima del pneumatico: larghezza 125 mm - pressione massima 1,25 Bar/18 PSI

For a longer longevity of the wheel, Mavic recommends that the total weight supported by the wheels doesn't exceed 180kg, E-bike included

REFERENZE RUOTE**SPOKES**

1	V00062531	Kit 16ft/rr Jbent bk rd spk275 27,5"+np
----------	-----------	---

HUB SHELLS

2	M40076	HUB BEARINGS 17x30x7 6903 x 2
3	V2373401	KIT ID360 135/142 DCL L1 AXLE WITH CLIP
4	V2372101	KIT ID360 135/142 D6T AXLE WITH CLIP
5	V2375701	Kit ID360 148 DCL axle with circlip
6	V2372201	KIT ID360 148 D6T AXLE WITH CLIP
7	V2252701	KIT ID360 INSERT SHAPED EAR LOBE > 2017
8	V00063631	Kit ID360 seal version 2 (larger)
9	V2375401	KIT ID360 MTB 24T 3 NOISE REDUCING PADS
10	V2372901	KIT 3 ID360 MTB SPRINGS
11	V2375201	KIT ID360 24 TEETH 2 RATCHET + MTB SPRING + PAD (specific)
12	V3430101	HG11 Freewheel Body ID360

OPTIONS

V2373001	KIT ADJUST. SYSTEM QRM AUTO ID360 for 17x30x7 bearing
----------	---

ADAPTERS

13	V2510701	ID360 EVO REAR AXLE ADAPTERS 12x142mm DCL & D6T
	V2510901	ID360 EVO REAR AXLE ADAPTERS 12x135mm DCL & D6T
	V2510801	ID360 EVO REAR AXLE ADAPTERS 9x135mm DCL & D6T

MAVIC **E-SPEEDCITY 1 650B****VENDUTO CON**

User guide	
Flap tubeless preinstallato	
Rondella per cassetta M9 non montata sulla ruota posteriore	
Rondella per cassetta M9 non montata sulla ruota posteriore	
User guide	
User guide	
Flap tubeless preinstallato	

COMPATIBILITY

Freewheel: Shimano/Sram, convertible to Campagnolo ED11, N3W and XD-R with optional driver bodies	
Front axle: 12mm thru axle, easily convertible to quick release with optional adapters. Convertible to 15mm with complete axle replacement	
Corpo ruota libera: convertibile SRAM XD strada (kit V2580101 venduto separatamente)	
Corpo ruota libera: convertibile SRAM XD strada (kit V2580101 venduto separatamente)	
Rear axle: 12mm thru axle, convertible to Quick Release with optional adapters and axle replacement	
Corpo ruota libera: convertibile SHIMANO HG light strada (kit V3850101 venduto separatamente)	
Corpo ruota libera: convertibile SHIMANO HG light strada (kit V3850101 venduto separatamente)	
Corpo ruota libera: convertibile SHIMANO MS (kit V3990101 venduto separatamente)	
Corpo ruota libera: convertibile SHIMANO MS (kit V3990101 venduto separatamente)	
Front axle: 12mm thru axle, easily convertible to quick release with optional adapters. Convertible to 15mm with complete axle replacement	
Front axle: 12mm thru axle, easily convertible to quick release with optional adapters. Convertible to 15mm with complete axle replacement	
Corpo ruota libera: convertibile CAMPAGNOLO N3W (kit V4270101 venduto separatamente)	
Corpo ruota libera: convertibile CAMPAGNOLO N3W (kit V4270101 venduto separatamente)	
ID360 Shimano Micro Spline alloy freewheel body (V3990101)	
Corpo ruota libera ID360 Sram XD (V3740101)	
Perno posteriore: solo per i dadi di fissaggio (inclusi), filettatura M9x1	
ID360 Shimano Micro Spline alloy freewheel body (V3990101)	
Rear axle: 12mm thru axle, convertible to Quick Release with adapters (delivered with non-boost wheel)	