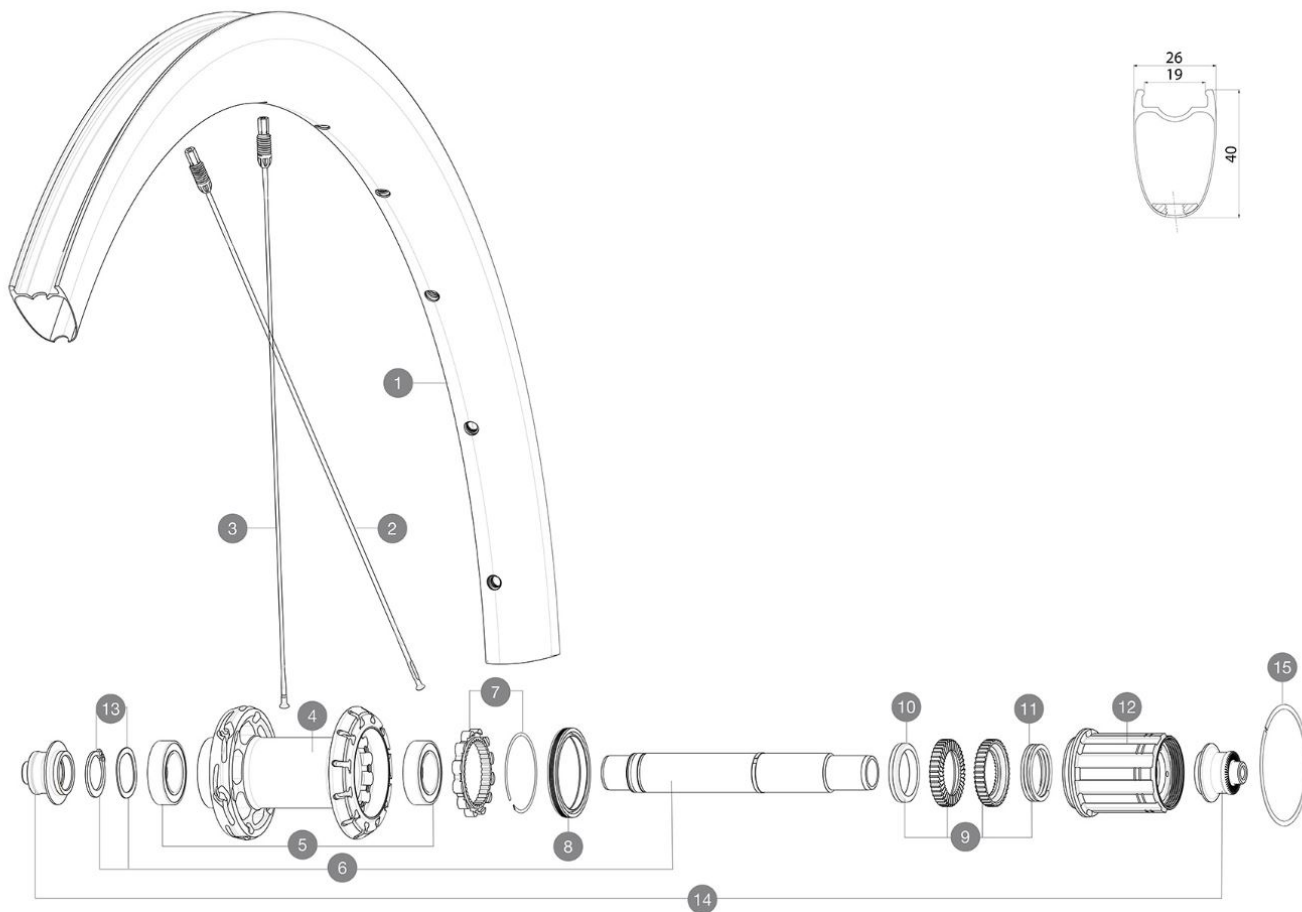


ASTM CATEGORY 1 : road only

REFERENZE RUOTE



RIMS



&NBSP;:

1 V00063109 Kit Rear rim Cosmic SLR40 Ltd

SPOKES

2 V3669401 Kit 12 DS Cosmic SLR40 aero ss spk266 M6
3 V3669301 Kit 12 NDS Cosmic SLR40 aero ss spk285M6

HUB SHELLS

4 N/A CORPO MOZZO
5 V2560401 KIT ID360 2 BEARINGS 17x28x7 + CIRCLIP + WAVED WASHER (QRM A)
6 V2252801 KIT ID360 UB REAR WHEEL AXLE WITH CIRCLIP/WAVE WASHER
7 V2252701 KIT ID360 INSERT SHAPED EAR LOBE > 2017
8 V00063631 Kit ID360 seal version 2 (larger)
9 V2251701 ID360 2 RATCHETS + SPRING + GREASE
10 V2500501 Kit 3 ID360 pad for noise reduction
11 V2251801 KIT 3 ID360 ROAD SPRINGS
12 V3430101 HG11 Freewheel Body ID360
13 V2560501 KIT ADJUST. SYSTEM QRM AUTO ID360 for 17x28x7 bearing
15 V2252201 KIT 2 REAR HUB RETENTION RINGS 48mm

ADAPTERS

14 V2253101 KIT REAR AXLE ADAPTOR QUICK RELEASE ID360

MAVIC COSMIC SLR 40 LTD

VENDUTO CON

BR301 quick releases (V24 501 01 frt, V24 502 01 rear)	
Carbon brake pads (V24 603 01 Shimano/Sram, V24 604 01 Campagnolo)	
UST valve and accessories (129 838 01)	
User guide	

COMPATIBILITY

Freewheel: Shimano/Sram, convertible to Campagnolo ED11, N3W and XD-R with optional driver bodies	
---	--

Specifications

CERCHIONI

- **Material** : 100% carbon fiber
 - **Height** : 40 mm
 - **Valve hole diameter** : 6.5 mm
 - **Tire** : UST Tubeless and tubetype
 - **Internal width** : 19 mm
 - **ETRTO size** : 622x19TC
- Fore Carbon tapeless tubeless technology
UST Tubeless Ready

RAGGI

- **Material** : steel
 - **Shape** : straight pull, elliptical aero, double butted (patented)
 - **Nipples** : Fore integrated aluminum
 - **Count** : front 18, rear 24
 - **Lacing** : front radial, rear Isopulse
- Isopulse lacing design

MOZZO

- **Front and rear bodies** : aluminum
 - **Axle material** : aluminum
- Instant Drive 360 freewheel technology
QRM Auto bearing preload technology

VERSIONS

- **Freewheel** : Shimano/Sram

PESI RUOTE

750