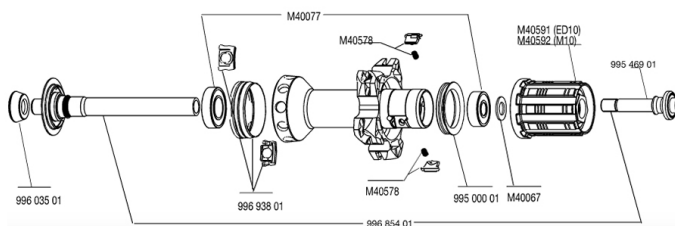


REFERENZE RUOTE

111990	R-SYS SLR M10 WTS	120059	R-SYS SLR M10 PR WTS
111991	R-SYS SLR ED11 WTS	120060	R-SYS SLR ED11 PR WTS
111996	R-SYS SLR TUBULAR M10 WTS	120061	R-SYS SLR TUBULAR M10 PR WTS
111997	R-SYS SLR TUBULAR ED11 WTS	120062	R-SYS SLR TUBULAR ED11PR WTS



RIMS



&NBSP;:

12020613	REAR R-SYS SLR CLINCHER RIM
99685401	R-SYS PREMIUM REAR AXLE
12020413	REAR R-SYS SLR TUBULAR RIM

SPOKES

12029401	10 BLK DRIVE SIDE SPOKES R-SYS SLR CLINCH.294mm
12029201	10 BLACK DRIVE SIDE SPOKES R-SYS SLR TUB.297mm
12029501	10 BLK OPP.DRIVE SIDE SPK R-SYS SLR CLINCH.284mm
99693801	2 SILVER TRACOMP RINGS + CLIPS

HUB SHELLS

M40591	CORPI RUOTA LIBERA FTS "L" ED10
99500001	GUARNIZIONE CORPO RUOTA LIBERA FTSL/FTSX
M40578	KIT CRICCHETTI FTSL (RUOTE STRADA)
99603501	KIT APPOGGIO FORCELLA POST. COS.CARB.ULITMATE
M40592	CORPI RUOTA LIBERA FTS "L" M10
M40067	10 DISTANZIALI / RONDELLE x CORPO RUOTA LIBERA
99546901	KIT DADO BLOC. A VITE TITANIUM x ASSE POST. M10/ED10

MAINTENANCE

11104001	Chambres à air 48mm
----------	---------------------

TYRES

11849101	Yksion PowerLink Tubular 23
11849801	Yksion GripLink 23

MAVIC *R-Sys SLR*

Specifications

PESI RUOTE