

MAVIC **ALLROAD PRO CARBON SL DISC****REFERENZE RUOTE**

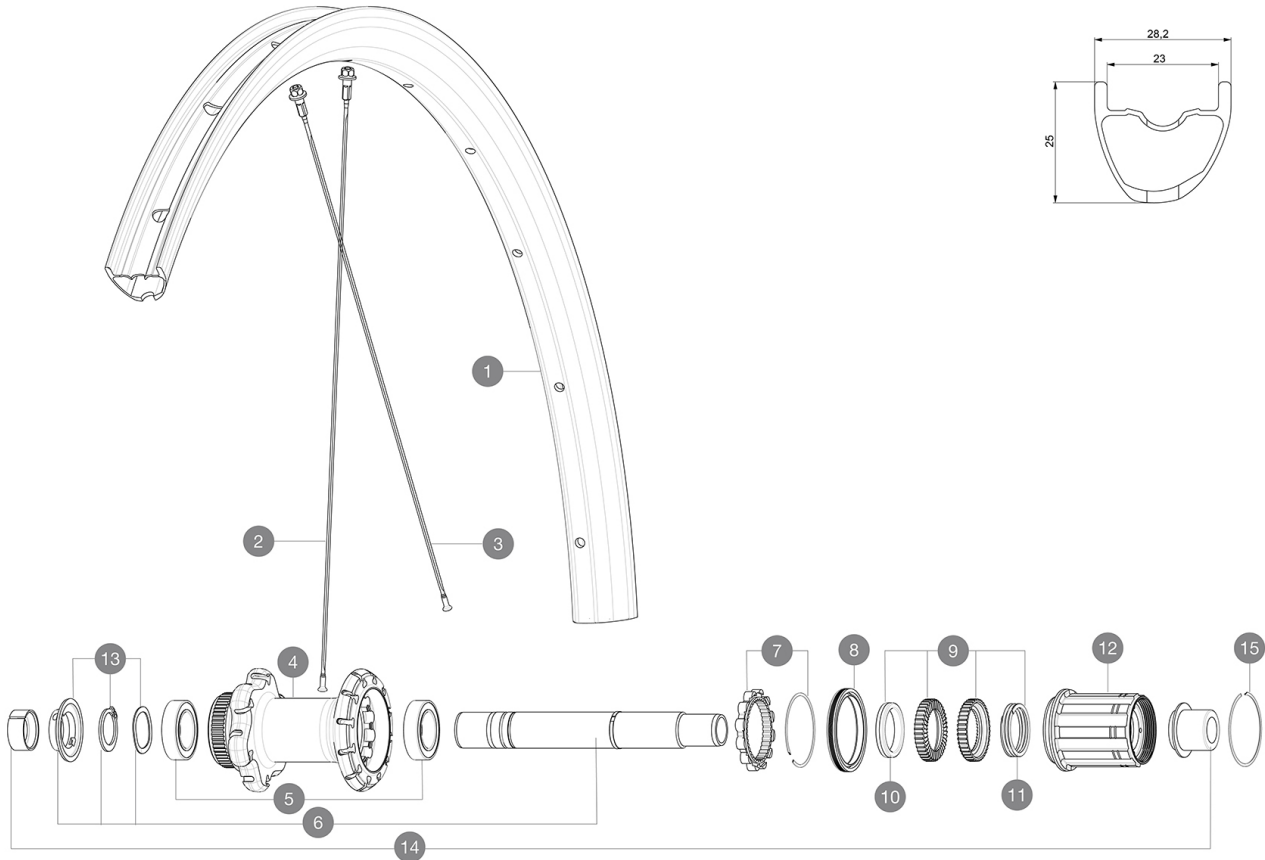
ASTM CATEGORY 2 : road and offroad with jumps less than 15cm

For a longer longevity of the wheel, Mavic recommends that the total weight supported by the wheels doesn't exceed 120kg, bike included

Recommended tyre sizes: 28 to 64 mm (1.1" to 2.5")

Max. Pressure: see indication on wheel and tyre. If they differ, use the lowest of the 2

Maximum tyre pressure: 4.4bar/64PSI with a 28mm tyre - 2.6bar/38PSI with a 64mm tyre

**RIMS**

&NBSP;:

| | | |
|---|----------|--|
| 1 | V2738913 | KIT REAR RIM ALLROAD PRO CARBON SL -while stock last |
| 1 | V4094513 | Kit Rear rim Allroad Pro Carbon SL while stock lasts |
| | V2620101 | UST RIM TAPE 25mm (for 21-24mm wide rim) |

SPOKES

| | | |
|---|----------|--|
| 2 | V3668301 | Kit 2 FRONT/NDS Allroad Pro Carbon SL stamped spoke 291 + al |
| 2 | V3821801 | KIT 12 FRT/REAR CROSSMAX PRO CARBON 29" EXTRA FLAT SPOKE 29 |
| 3 | V2384401 | KIT 12 FRONT + REAR NON-DRIVE SIDE BUTTED SPOKES 274mm CROSS |

HUB SHELLS

| | | |
|----|-----------|--|
| 4 | N/A | CORPO MOZZO |
| 5 | V2560401 | KIT ID360 2 BEARINGS 17x28x7 + CIRCLIP + WAVED WASHER (QRM A |
| 6 | V2252901 | KIT ID360 CENTER LOCK 135/142mm AXLE WITH CIRCLIP |
| 7 | V2252701 | KIT ID360 INSERT SHAPED EAR LOBE > 2017 |
| 8 | V00063631 | Kit ID360 seal version 2 (larger) |
| 9 | V2251701 | ID360 2 RATCHETS + SPRING + GREASE |
| 10 | V2500501 | Kit 3 ID360 pad for noise reduction |
| 11 | V2251801 | KIT 3 ID360 ROAD SPRINGS |
| 12 | V3430101 | HG11 Freewheel Body ID360 |
| 13 | V2560501 | KIT ADJUST. SYSTEM QRM AUTO ID360 for 17x28x7 bearing |
| 15 | V2252201 | KIT 2 REAR HUB RETENTION RINGS 48mm |

ADAPTERS

| | | |
|----|----------|---|
| 14 | V3811001 | KIT ROAD ID360 RR CL ENDCAP (12MM) |
| | V2510901 | ID360 EVO REAR AXLE ADAPTERS 12x135mm DCL & D6T |
| | V2510801 | ID360 EVO REAR AXLE ADAPTERS 9x135mm DCL & D6T |

VENDUTO CON

| | |
|--|--|
| Mavic tyre sealant (rear wheel) (355 466 01) | |
| Tyre sealant syringe | |
| Front QR adapters (996 941 01 for MTB or B41 043 01 for road) | |
| Rear QR adapters for Instant Drive 360 (B49 894 01) | |
| UST valve and accessories (129 838 01) | |
| UST valve and accessories (129 838 01) | |
| UST valve and accessories (129 838 01) | |
| Flap tubeless preinstallato | |
| Flap tubeless preinstallato | |
| User guide | |
| User guide | |
| User guide | |

COMPATIBILITY

| | |
|--|--|
| Freewheel: Shimano/Sram, convertible to Campagnolo and XD-R with optional driver bodies | |
| Freewheel: Shimano/Sram, convertible to Campagnolo and XD-R with optional driver bodies | |
| Freewheel: Shimano/Sram, convertible to Campagnolo and XD-R with optional driver bodies | |
| Front axle: 12mm thru axle, easily convertible to quick release with included adapters. Convertible to 15mm with complete axle replacement | |
| Front axle: 12mm thru axle, easily convertible to quick release with included adapters. Convertible to 15mm with complete axle replacement | |
| Front axle: 12mm thru axle, easily convertible to quick release with included adapters. Convertible to 15mm with complete axle replacement | |
| Rear axle: 12mm thru axle, convertible to Quick Release with included adapters | |
| Perno posteriore: perno passante da 12 mm, convertibile in un sistema a bloccaggio rapido tramite gli adattatori opzionali | |
| Perno posteriore: perno passante da 12 mm, convertibile in un sistema a bloccaggio rapido tramite gli adattatori opzionali | |

Specifications

CERCHIONI

- **Material** : 100% Unidirectional carbon fiber
- **Material** : 100% Unidirectional carbon fiber
- **Material** : 100% Unidirectional carbon fiber

- **Height** : 25mm
- **Drilling** : traditional

Disc brake specific profile

- **Valve hole diameter** : 6.5 mm
- **Tire** : UST Tubeless and tubetype
- **Internal width** : 23 mm

• **ETRTO size** : 622x23TSS Road

Hookless profile

Use with Mavic Tubeless Tape

- **Height** : 25mm
- **Height** : 25mm

- **Drilling** : traditional
- **Drilling** : traditional

Disc brake specific profile

Disc brake specific profile

- **Valve hole diameter** : 6.5 mm
- **Valve hole diameter** : 6.5 mm
- **Tire** : UST Tubeless and tubetype
- **Tire** : UST Tubeless and tubetype

• **Internal width** : 23mm (update date: 2024-02-15)

- **Internal width** : 23 mm

MOZZO

- **Front and rear bodies** : aluminum
- **Front and rear bodies** : aluminum

- **Front and rear bodies** : aluminum

- **Axle material** : aluminum

- **Axle material** : aluminum

- **Axle material** : aluminum

- **Front** : Quick release, 12x100 and 15x100 through axle compatible

- **Front** : Quick release, 12x100 and 15x100 through axle compatible

- **Front** : Quick release, 12x100 and 15x100 through axle compatible

- **Rear** : Quick Release, 12x142 and 12x135 compatible

- **Rear** : Quick Release, 12x142 and 12x135 compatible

- **Rear** : Quick Release, 12x142 and 12x135 compatible

Mozzo disponibile solo con rotori dei freni Center Lock

Instant Drive 360

Instant Drive 360

Instant Drive 360

QRM Auto

QRM Auto

PESI RUOTE

775