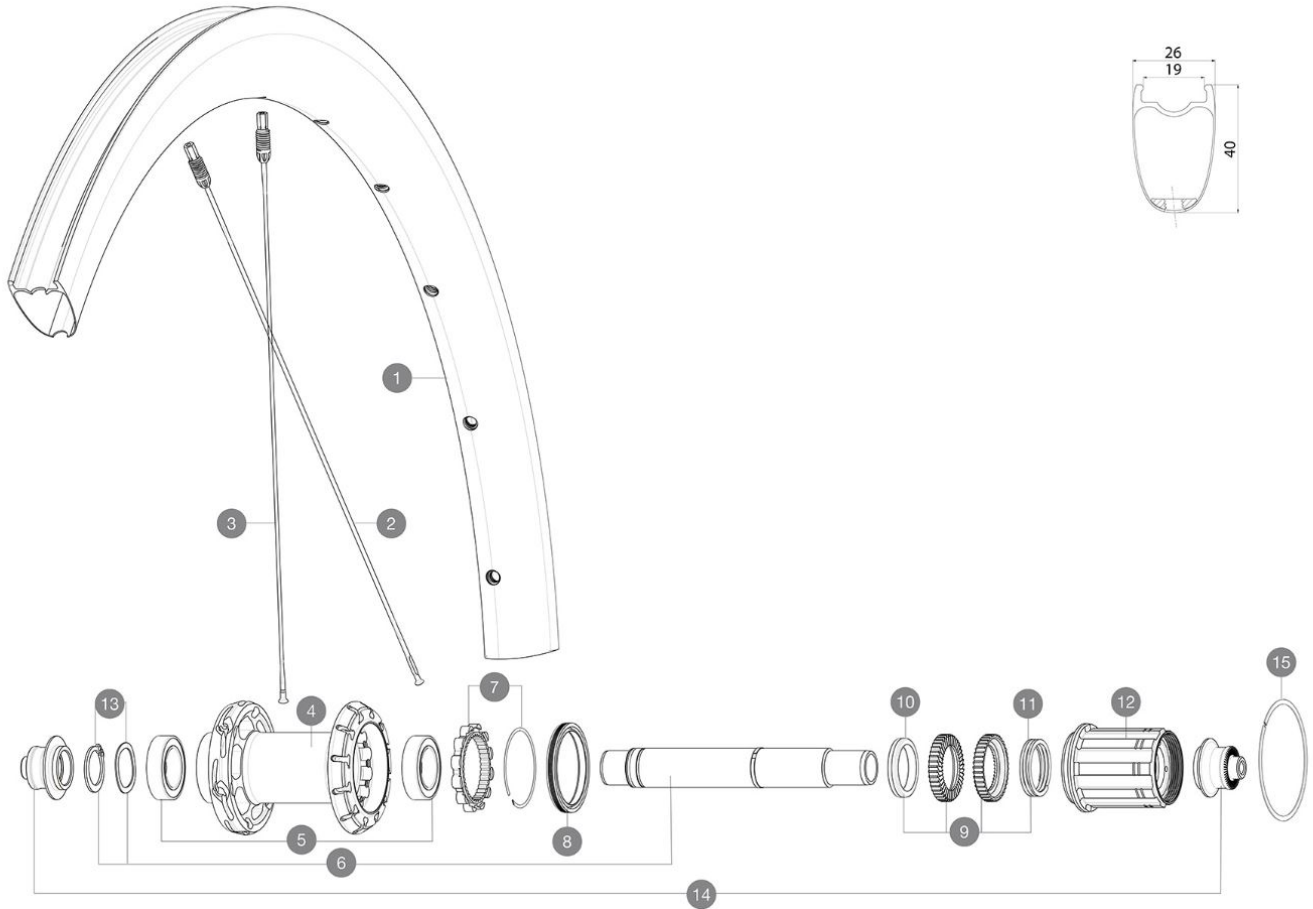


ASTM CATEGORY 1 : road only

## REFERENZEN RÄDER



### RIMS



&NBSP;:

1 V00063109 Kit Rear rim Cosmic SLR40 Ltd

### SPOKES

2 V3669401 Kit 12 DS Cosmic SLR40 aero ss spk266 M6  
3 V3669301 Kit 12 NDS Cosmic SLR40 aero ss spk285M6

### HUB SHELLS

4 N/A NABENKÖRPER  
5 V2560401 KIT ID360 2 BEARINGS 17x28x7 + CIRCLIP + WAVED WASHER (QRM A)  
6 V2252801 KIT ID360 UB REAR WHEEL AXLE WITH CIRCLIP/WAVE WASHER  
7 V2252701 KIT ID360 INSERT SHAPED EAR LOBE > 2017  
8 V00063631 Kit ID360 seal version 2 (larger)  
9 V2251701 ID360 2 RATCHETS + SPRING + GREASE  
10 V2500501 Kit 3 ID360 pad for noise reduction  
11 V2251801 KIT 3 ID360 ROAD SPRINGS  
12 V3430101 HG11 Freewheel Body ID360  
13 V2560501 KIT ADJUST. SYSTEM QRM AUTO ID360 for 17x28x7 bearing  
15 V2252201 KIT 2 REAR HUB RETENTION RINGS 48mm

### ADAPTERS

14 V2253101 KIT REAR AXLE ADAPTOR QUICK RELEASE ID360

# MAVIC COSMIC SLR 40 LTD

## GELIEFERT MIT

BR301 quick releases (V24 501 01 frt, V24 502 01 rear)	
Carbon brake pads (V24 603 01 Shimano/Sram, V24 604 01 Campagnolo)	
UST valve and accessories (129 838 01)	
User guide	

## COMPATIBILITY

Freewheel: Shimano/Sram, convertible to Campagnolo ED11, N3W and XD-R with optional driver bodies	
---	--

## Specifications

### FELGEN

- **Material** : 100% carbon fiber
  - **Height** : 40 mm
  - **Valve hole diameter** : 6.5 mm
  - **Tire** : UST Tubeless and tubetype
  - **Internal width** : 19 mm
  - **ETRTO size** : 622x19TC
- Fore Carbon tapeless tubeless technology  
UST Tubeless Ready

### SPEICHEN

- **Material** : steel
  - **Shape** : straight pull, elliptical aero, double butted (patented)
  - **Nipples** : Fore integrated aluminum
  - **Count** : front 18, rear 24
  - **Lacing** : front radial, rear Isopulse
- Isopulse lacing design

### RADNABE

- **Front and rear bodies** : aluminum
  - **Axle material** : aluminum
- Instant Drive 360 freewheel technology  
QRM Auto bearing preload technology

### VERSIONS

- **Freewheel** : Shimano/Sram

### RADGEWICHTE

750