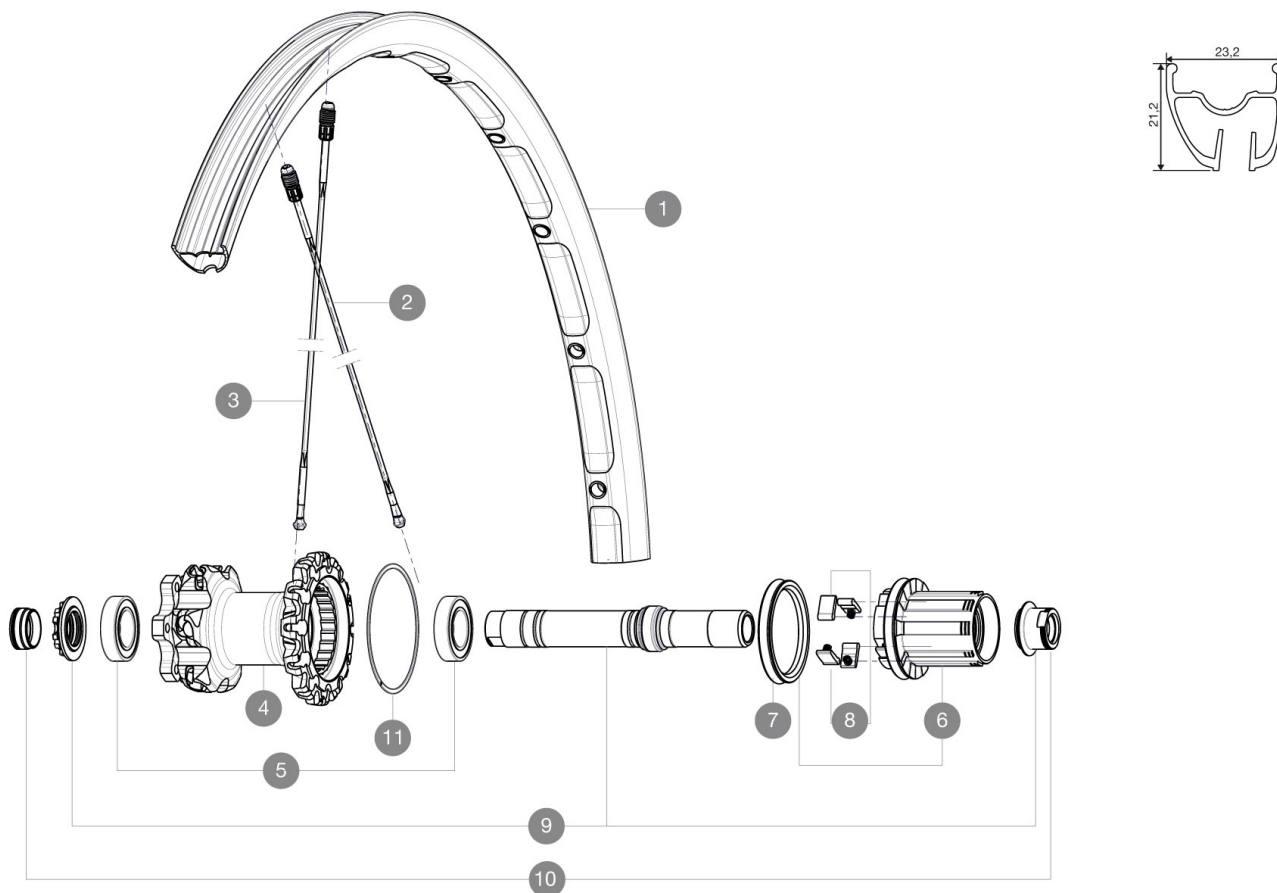


## REFERENCES WHEELS



### RIMS



VALVE HOLE  $\bar{A}$  (MM): 6.5 :

1	V2312113	"KIT REAR CROSSMAX ST 27,5" RIM"
---	----------	----------------------------------

### SPOKES

2	V2380201	"KIT 10 DS CROSSMAX ST 27,5" ALU SPK 251,5mm"
3	V2380301	KIT 10 NDS CROSSMAX ST 27,5" ALU SPK 281,5mm

### HUB SHELLS

4	N/A	HUB BODY
5	M40076	HUB BEARINGS 17x30x7 6903 x 2
6	35126001	ITS-4 FREEWHEEL BODY + SEAL 2013 (NO PAWLS)
7	99610701	ITS-4 FREEWHEEL SEAL
8	99610601	PAWLS KIT FOR ITS-4 (OR TS-2)
9	30870401	REAR QRM + AXLE KIT ITS4 135mm from 2012
11	30871801	ELASTIC RING 56mm diam. ITS-4 20 SPOKES

### ADAPTERS

10	30872201	FRAME SUPPORT ITS-4 135mm REAR AXLE > 2012
----	----------	--

# **MAVIC** Crossmax ST

## **DELIVERED WITH**

BX601 rear quick release	
BX601 rear quick release	
UST valve and accessories	
UST valve and accessories	
Front 15 mm adapters	
Front 15 mm adapters	
Rear QR adapters	
Rear QR adapters	
Rear 12x142mm adapters	
Rear 12x142mm adapters	
Specific disc bolts	
Specific disc bolts	
Computer magnet (front wheel)	
Computer magnet (front wheel)	
Multifonction adjustment wrench	
Multifonction adjustment wrench	
User guide	
User guide	