

**MAVIC** **CROSSRIDE FTS-X 29**

ASTM CATEGORY 3 : offroad with jumps less than 61cm

ID360 Shimano steel freewheel body (V3790101)

For a longer longevity of the wheel, Mavic recommends that the total weight supported by the wheels doesn't exceed 150kg, bike included

Maximum tyre pressure: 6.1bar/88PSI with a 25mm tyre - 3.5bar/51PSI with a 64mm tyre

Recommended weight limit : 120kg

Recommended weight limit : 120kg

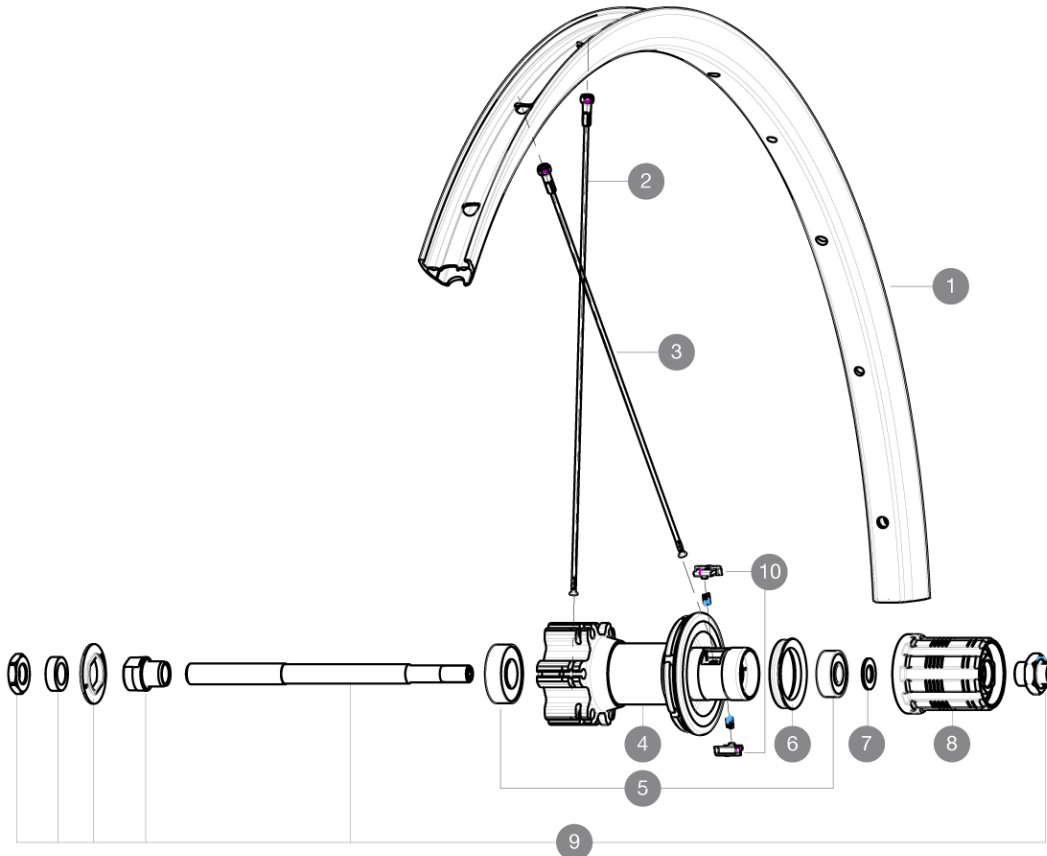
Recommended tire sizes: 28 to 64 mm (1.1" to 2.5")

ETRTO recommended tyre sizes: 35mm to 69mm (1.4" to 2.7")

ID360 N3W freewheel body (V4270101)

**REFERENCES WHEELS**

R76401 XRIDE FTS-X INT 29 QR M10

**RIMS**

VALVE HOLE (MM): 8,5 WITH POP OFF REDUCER :

|   |          |   |
|---|----------|---|
| 1 | V2314915 | "KIT FRT/RR RIM CROSSRIDE/CROSSRIDE FTSX 29"" |
|---|----------|---|

**SPOKES**

|   |          |  |
|---|----------|--|
| 2 | V2383001 | KIT 12 FT/NDS CROSSRIDE FTSX 29" SPK 297mm         |
| 3 | 36690401 | KIT 12 DS XONE/XRIDE FTSX/AKSIMUM DISC 9 SPK 294mm |

**HUB SHELLS**

|    |          |   |
|----|----------|---|
| 4  | N/A      | HUB BODY                                      |
| 5  | M40660   | REAR HUB 608+6001 BEARINGS                    |
| 6  | 99500001 | FTSL/FTSX FREEHUB BODY SEAL                   |
| 7  | M40067   | INTERNAL FREEWHEEL SPACER FTSL/FTSX           |
| 8  | 30871101 | FTS-L ROAD FREEWHEEL BODY HG11 8/9 compatible |
| 9  | 32348001 | MTB DISC REAR AXLE QRM MTB DISC               |
| 10 | 32430301 | FTSX PAWLS KIT (MTB WHEELS)                   |

**DELIVERED WITH**

|                      |  |
|----------------------|--|
| User guide           |  |
| BR101 quick releases |  |
| Rim tape             |  |
| Front QR adapters    |  |
| BR101 quick releases |  |
| BR101 quick releases |  |
| BR101 quick releases |  |
| BR101 quick releases |  |
| BR101 quick releases |  |
| BR101 quick releases |  |
| BR101 quick releases |  |
| BR101 quick releases |  |
| BR101 quick releases |  |
| BR101 quick releases |  |
| BR101 quick releases |  |
| BR101 quick releases |  |
| BR101 quick releases |  |
| BR101 quick releases |  |
| Valve reducer        |  |
| Front QR adapters    |  |
| Front QR adapters    |  |
| Front QR adapters    |  |
| Front QR adapters    |  |
| User guide           |  |

**COMPATIBILITY**

|  |  |
|--|--|
| Freewheel: Shimano/Sram  |  |
| Freewheel: Shimano/Sram  |  |
| Freewheel: Shimano/Sram  |  |
| Freewheel: Shimano/Sram  |  |
| Front axle: convertible from 15mm thru axle to Quick Release with included adapters                    |  |
| Front axle: convertible from 15mm thru axle to Quick Release with included adapters                    |  |
| Front axle: convertible from 15mm thru axle to Quick Release with included adapters                    |  |
| Front axle: convertible from 15mm thru axle to Quick Release with included adapters                    |  |
| Front axle: convertible from 15mm thru axle to Quick Release with included adapters                    |  |
| Front axle: convertible from 15mm thru axle to Quick Release with included adapters                    |  |
| Front axle: convertible from 15mm thru axle to Quick Release with included adapters                    |  |
| Front axle: convertible from 15mm thru axle to Quick Release with included adapters                    |  |
| Rear axle: 12mm thru axle, convertible to Quick Release with adapters (delivered with non-boost wheel) |  |
| ID360 Shimano steel freewheel body (V3790101)  |  |
| Rear axle: 12x148 Boost thru axle  |  |
| ID360 N3W freewheel body (V4270101)  |  |