

MAVIC Aksium Disc TA

ASTM CATEGORY 2 : road and offroad with jumps less than 15cm

For a longer longevity of the wheel, Mavic recommends that the total weight supported by the wheels don't exceed 120kg, bike included

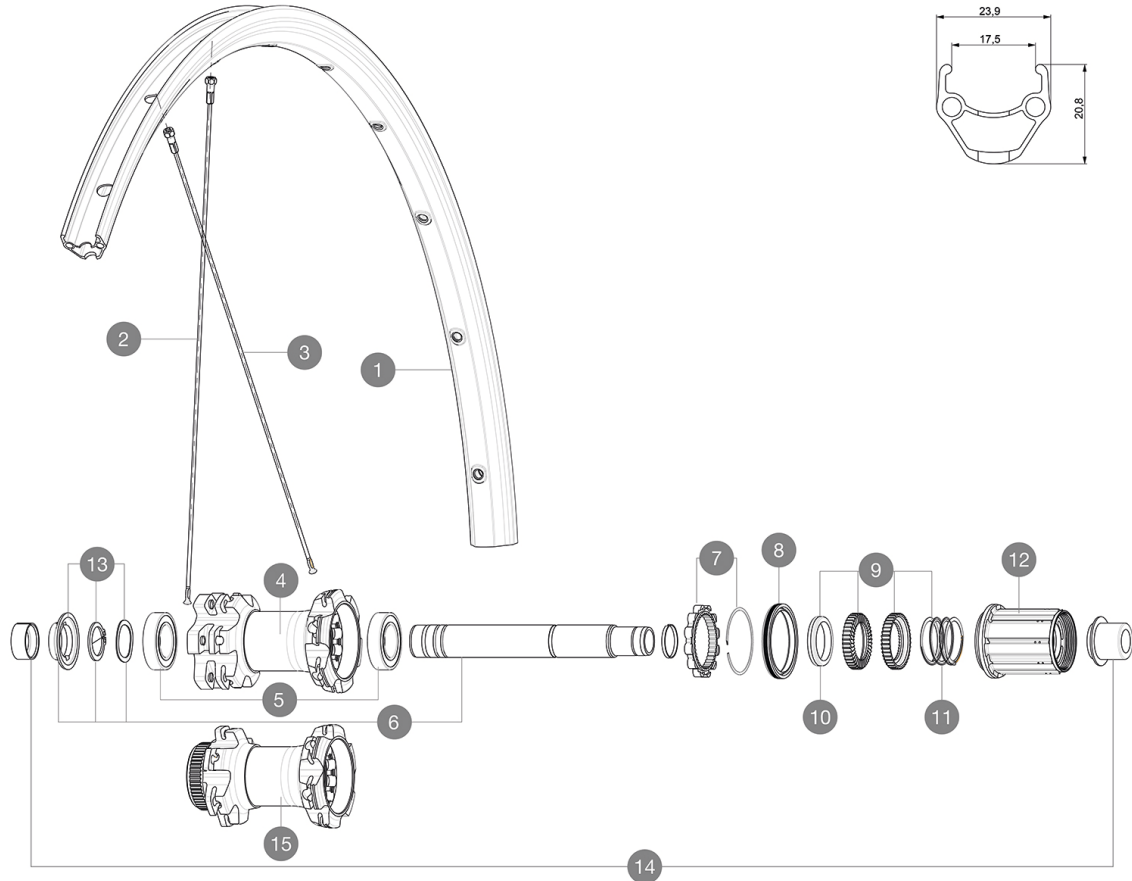
Recommended tyre sizes: 25 to 32 mm

Max. Pressure: 23mm 8.7 bars - 125 psi, 25/28mm 7.7 bars - 110 psi

REFERENCES WHEELS

R18911 Aks18D6BRr12x142SV

R18921 Aks18DCLRr12x142SV



RIMS



&NBSP;:

1 V2290815 KIT FRT/REAR RIM AKSIUM ONE DISC/AKSIUM DISC

SPOKES

2 V2277201 KIT 12 FT 9/12 AKSIUM DISC ALLR 700 SPK 296mm
3 V2279201 KIT 12 DS AKSIUM DISC 12mm RND SPK 292mm

HUB SHELLS

5 M40076 HUB BEARINGS 17x30x7 6903 x 2
6 V2252901 KIT ID360 CENTER LOCK 135/142mm AXLE W/CLIP
6 V2253001 KIT ID360 6 BOLTS 135/142mm AXLE WITH CIRCLIP
7 V2252701 KIT ID360 INSERT SHAPED EAR LOBE > 2017
8 V2251601 KIT ID360 SEAL + GREASE
9 V2251701 KIT ID360 2 RATCHETS + SPRING + GREASE
10 V2500501 KIT ID360 3 PADS NOISE REDUCING
11 V2251801 KIT 3 ID360 ROAD SPRINGS
12 V4000101 HG11 STEEL ROAD FREE HUB BODY ID360 - while stock last
12 V3430101 HG11 Freewheel Body ID360
13 V2560501 KIT ADJUST. SYSTEM QRM AUTO ID360 for 17x28x7 bearing

ADAPTERS

14 V2510701 ID360V2RrAxleAdapt12x142/148
V2510901 ID360 EVO RrAxleAdpt12x135/150
V2510801 ID360 V2 RrAxleAdapt9x135

MAVIC Aksium Disc TA

DELIVERED WITH

BR101 quick releases (M40350 firt, M40351 rear road, M40352 rear MTB)	
Rim tape	
User guide	

COMPATIBILITY

Freewheel: Shimano/Sram, convertible to Campagnolo and XD-R with optional driver bodies	
Front axle: 12mm thru axle. Optional: Easily convertible to quick release with adequate adapters, convertible to 15mm with complete axle replacement	
Rear axle: 12mm thru axle, convertible to Quick Release with optional adapters (not available in Germany)	

Specifications

RIMS

- **Material** : S6000 Aluminum
- **Height** : 21 mm
- **Joint** : pinned
- **Drilling** : traditional with H2 reinforcement
Disc brake specific profile
- **Valve hole diameter** : 6.5 mm
- **Tyre** : clincher
- **Internal width** : 17 mm
- **ETRTO size** : 622x17C

SPOKES

- **Material** : steel
- **Shape** : straight pull, round
- **Nipples** : steel, ABS
- **Count** : 24 front and rear
- **Lacing** : front and rear crossed 2

WHEEL HUB

- **Front and rear bodies** : aluminum
- **Axle material** : aluminum
- **Front bearings** : sealed cartridge bearings (QRM),
Rear bearings auto adjust sealed cartridge bearings (QRM Auto)
- **Freewheel** : Instant Drive 360

VERSIONS

- **Color** : Black only
- **Disc standard** : 6 Bolts or Center Lock(R)

WHEEL WEIGHTS

990