

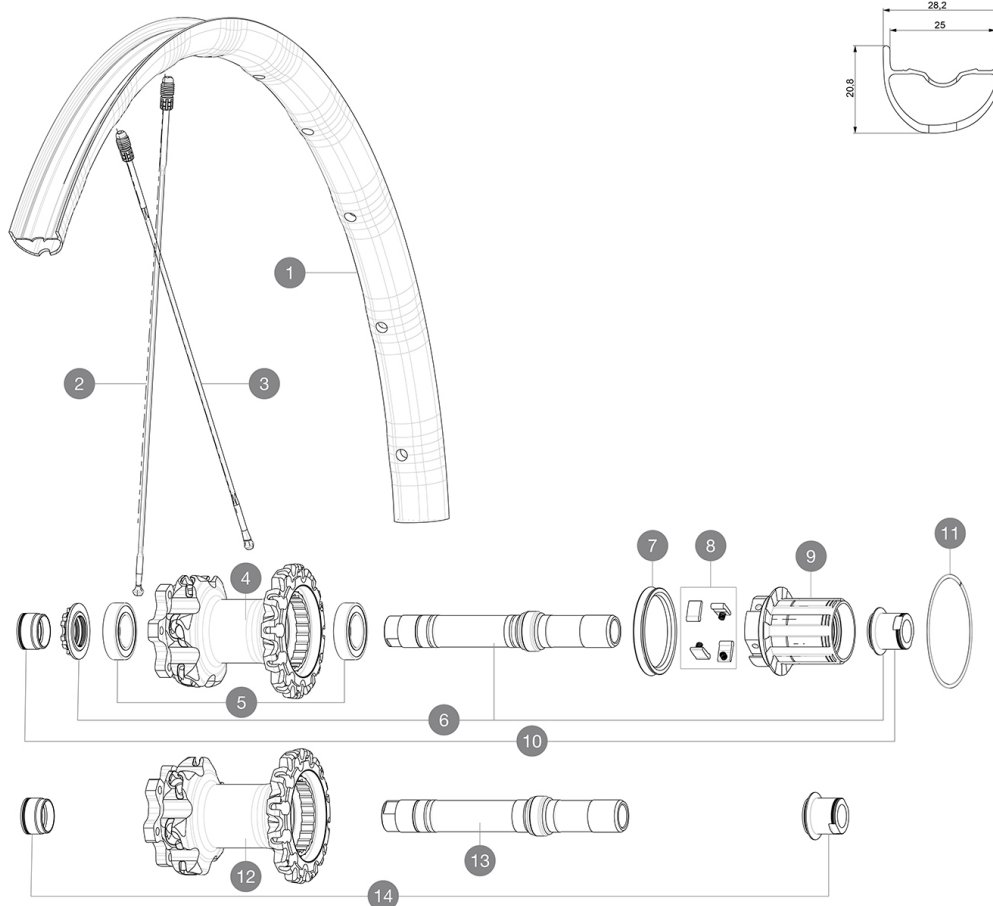
ASTM CATEGORY 3 : CROSS COUNTRY AND TRAIL RIDING

For a longer longevity of the wheel, Mavic recommends that the total weight supported by the wheels don't exceed 120kg, bike included

Recommended tyre sizes: 46mm to 64mm (1.8" to 2.5")

REFERENCES WHEELS

P86191	XA Pro 27,5 Pr	R22191	Xa Pro 27,5 Bst Pr
P86351	XA Pro 27,5 Pr Bst	R22521	Xa Pro 27,5 Pr XD
P86611	XA Pro 27,5 Pr XD	R22531	Xa Pro 27,5 Pr Bst XD
P86621	XA Pro 27,5 Pr Bst XD	R22181	Xa Pro 27,5 Pr



RIMS



&NBSP::

1	V2318613	KIT REAR RIM XA PRO 27,5"
---	----------	---------------------------

SPOKES

2	V2384701	KIT 12 FT/NDS CROSSMAX PRO 27,5" SPK 275mm
2	V2385501	KIT 1 FT/RR XA PRO 27,5" BUTT ALU SPOK 275mm - while stock
3	36675101	"KIT 10 DS XMAX SLR/END/PRO/DEEMAX PRO 27,5"" SPK 251,5mm"

HUB SHELLS

4	N/A	HUB BODY
5	M40076	HUB BEARINGS 17x30x7 6903 x 2
6	30870401	REAR QRM + AXLE KIT ITS4 135mm from 2012
7	99610701	ITS-4 FREEWHEEL SEAL
8	99610601	PAWLS KIT FOR ITS-4 (OR TS-2)
9	35126001	ITS-4 FREEWHEEL BODY + SEAL 2013 (NO PAWLS)
11	30871801	ELASTIC RING 56mm diam. ITS-4 20 SPOKES
12	N/A	HUB BODY
13	V2370801	KIT REAR QRM+ AXLE BOOST ITS-4 148mm

ADAPTERS

10	30859301	AXLE ADAPTER Rr 12x142/148mm Pro Carb MTB (Grey)
	30872201	FRAME SUPPORT ITS-4 135mm REAR AXLE > 2012
	30873101	2 REAR REDUCERS 12/9,5mm 2012 ITS4 HUB

DELIVERED WITH

UST valve and accessories (129 838 01)	
Multifunction adjustment wrench (325 423 01)	
User guide	

COMPATIBILITY

Freewheel: Shimano/Sram or XD	
Front axle: convertible from 15mm thru axle to Quick Release with optional adapters	
Rear axle: 12mm thru axle, convertible to Quick Release with optional adapters	

Specifications

RIMS

- **Material** : Mxstal
- **Joint** : SUP
- **Drilling** : Fore
- **Weight reduction** : ISM 4D
- **Valve hole diameter** : 6.5 mm
- **Tyre** : UST Tubeless and tubetype
- **Internal width** : 25 mm
- **ETRTO size 27.5"** : 584x25TSS
- **ETRTO size 29"** : 622x25TSS

Hookless profile

SPOKES

- **Material** : Zicral
- **Shape** : straight pull, bladed, front double butted
- **Nipples** : Fore integrated aluminum
- **Count** : 24 front and rear
- **Lacing** : front crossed 2, rear Isopulse
- **Lacing** : front and rear crossed 2

WHEEL HUB

- **Front and rear bodies** : aluminum
 - **Axle material** : aluminum
- Adjustable sealed cartridge bearings (QRM+)
- **Freewheel** : ITS-4 alloy

VERSIONS

- **Color** : Black only
 - **Disc standard** : 6 Bolts only
 - **Hub width** : Boost (front 110, rear 148) or Non-Boost (front 100, rear 135/142)
- Lefty Supermax

WHEEL WEIGHTS

Weight Rear 27.5": 865
 Weight Rear 29": 905