

**MAVIC** **KSYRIUM SL**

ASTM CATEGORY 2 : road and offroad with jumps less than 15cm

Maximum tyre pressure: 4.4bar/64PSI with a 28mm tyre - 2.6bar/38PSI with a 64mm tyre

Maximum tyre pressure: 6.75bar/97PSI with a 23mm tyre - 3.8bar/55PSI with a 62mm tyre

For a longer longevity of the wheel, Mavic recommends that the total weight supported by the wheels doesn't exceed 120kg, bike included

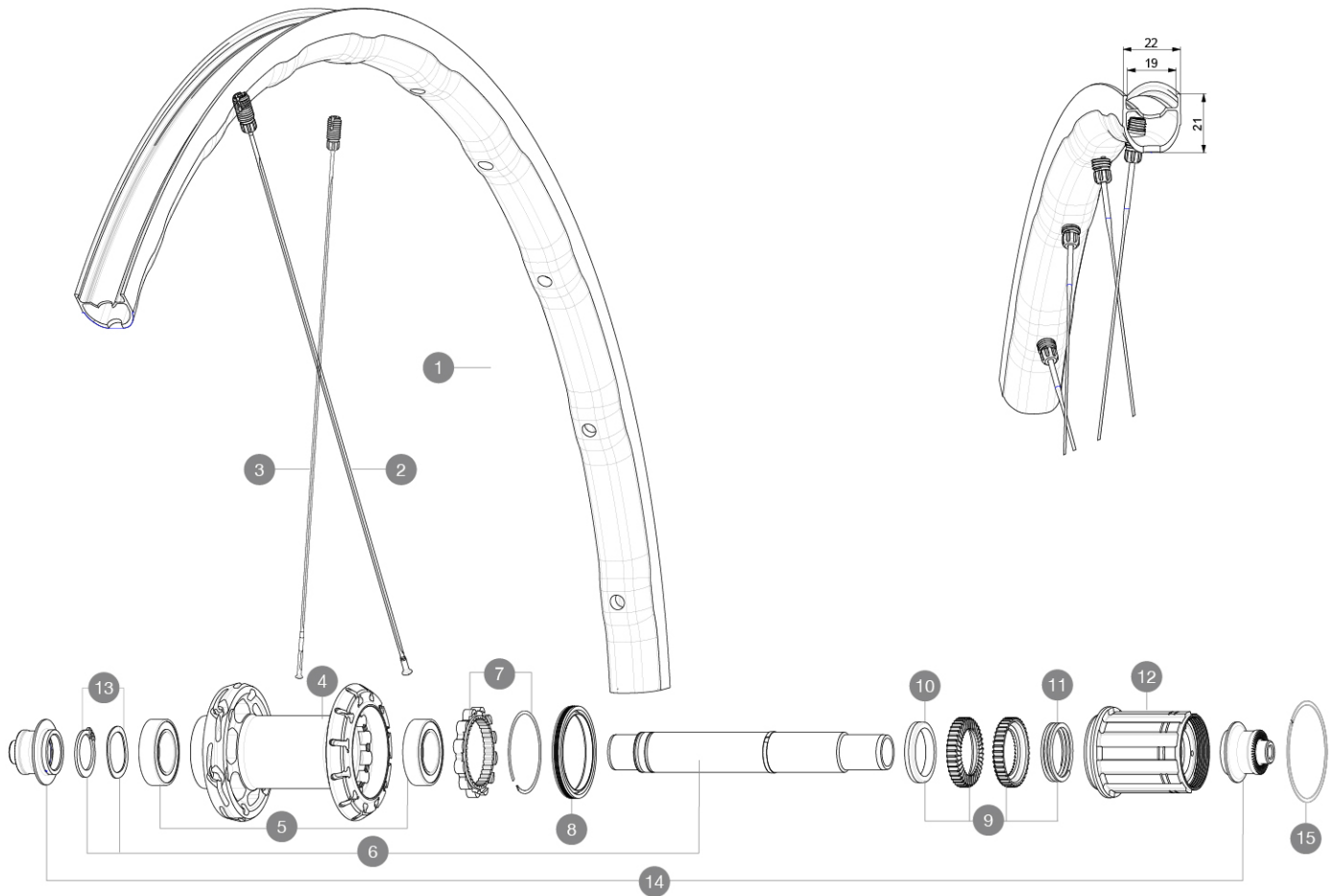
Recommended tyre sizes: 25 to 32 mm

Max. Pressure: see indication on wheel and tyre. If they differ, use the lowest of the 2

Maximum tyre size: width 62mm - pressure max. 3.8Bar/55PSI

**REFERENCES WHEELS**

R36781 KSYRIUM SL RB 700 QR M11

**RIMS**

&NBSP;:

**1** V4094013 Kit Rear rim Ksyrium SL RB

**SPOKES**

**2** V4164201 Kit 12 rear Ksyrium SL DS butted spoke 278mm M7/7  
**3** V4164101 Kit 12 rear Ksyrium SL NDS butted aero spoke 297mm M7/7

**HUB SHELLS**

**4** N/A HUB BODY  
**5** V2560401 KIT 2 BEARINGS 17x28x7 + WAVED WASHER + CLIP  
**6** V2252801 KIT ID360 UB REAR AXLE W/CLIP/WAVED WASHER  
**7** V2252701 KIT ID360 INSERT SHAPED EAR LOBE > 2017  
**8** V00063631 Kit ID360 seal version 2 (larger)  
**9** V2251701 KIT ID360 2 RATCHETS + SPRING + GREASE  
**10** V2500501 KIT ID360 3 PADS NOISE REDUCING  
**11** V2251801 KIT 3 ID360 ROAD SPRINGS  
**12** V3430101 HG11 Freewheel Body ID360  
**13** V2560501 KIT ADJUST. SYSTEM QRM AUTO ID360 for 17x28x7 bearing

**15** V2252201 KIT 2 REAR HUB RETENTION RINGS 48mm

**ADAPTERS**

**14** V2253101 KIT REAR AXLE ADAPTOR QUICK RELEASE ID360

**DELIVERED WITH**

User guide	
Mavic tyre sealant (rear wheel) (355 466 01)	
BR301 quick releases (V24 501 01 frt, V24 502 01 rear)	
BR301 quick releases (V24 501 01 frt, V24 502 01 rear)	
BR301 quick releases (V24 501 01 frt, V24 502 01 rear)	
BR301 quick releases (V24 501 01 frt, V24 502 01 rear)	
UST valve and accessories (129 838 01)	
UST valve and accessories (129 838 01)	
UST valve and accessories (129 838 01)	
User guide	
User guide	
User guide	
UST valve and accessories (129 838 01)	

**COMPATIBILITY**

Freewheel: Shimano/Sram, convertible to Campagnolo and XD-R with optional driver bodies	
Freewheel: Shimano/Sram, convertible to Campagnolo and XD-R with optional driver bodies	
Front axle: Quick Release only	
Front axle: Quick Release only	
Freewheel body: convertible SRAM XD road (kit V2580101 sold separately)	
Rear axle: Quick Release only	
Freewheel body: convertible SRAM XD road (kit V2580101 sold separately)	
Rear axle: Quick Release only	
Freewheel body: convertible SHIMANO HG light road (kit V3850101 sold separately)	
Freewheel body: convertible SHIMANO HG light road (kit V3850101 sold separately)	
Freewheel body: convertible SHIMANO MS (kit V3990101 sold separately)	
Freewheel body: convertible SHIMANO MS (kit V3990101 sold separately)	
Freewheel body: convertible CAMPAGNOLO ED (kit V3440101 sold separately)	
Freewheel body: convertible CAMPAGNOLO ED (kit V3440101 sold separately)	
Freewheel body: convertible CAMPAGNOLO N3W (kit V4270101 sold separately)	
Freewheel body: convertible CAMPAGNOLO N3W (kit V4270101 sold separately)	
Front axle: convertible from 15mm thru axle to Quick Release with adapters (delivered with non-boost wheel)	
FTS-L Shimano / Sram freewheel body ([30871101] - Delivered on the wheel)	