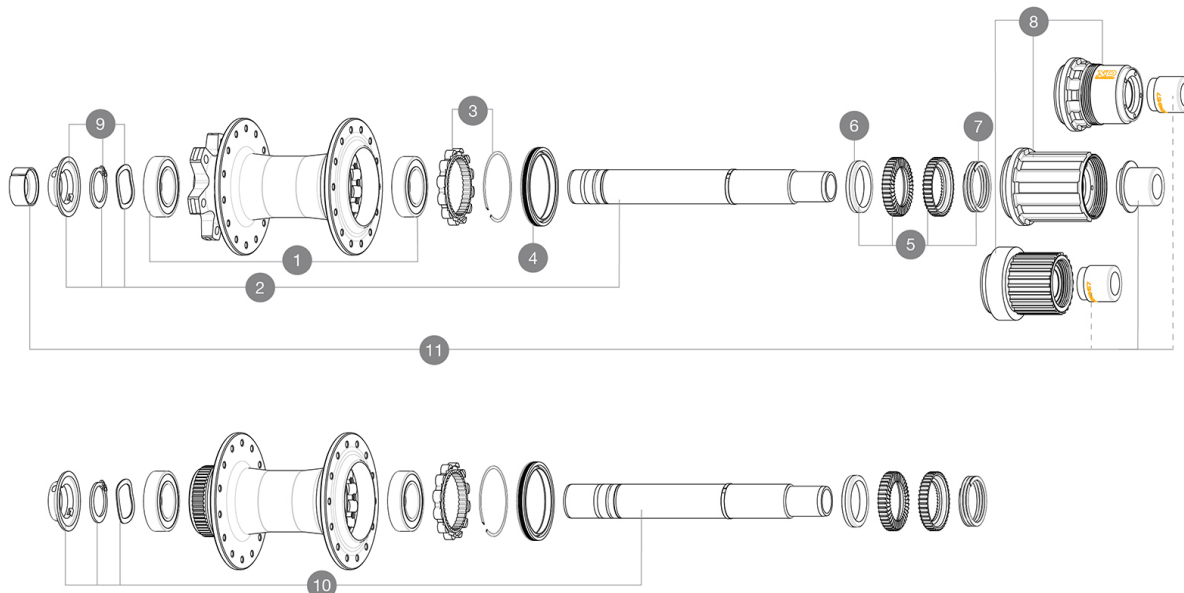


REFERENCES WHEELS



HUB SHELLS

1	M40076	HUB BEARINGS 17x30x7 6903 x 2
2	V2372201	KIT ID360 148 D6T AXLE WITH CLIP
3	V2252701	KIT ID360 INSERT SHAPED EAR LOBE > 2017
4	V2251601	KIT ID360 SEAL + GREASE
5	V2375201	KIT ID360 24 TEETH 2 RATCHET + MTB SPRING + PAD (specific)
6	V2375401	KIT ID360 MTB 24T 3 NOISE REDUCING PADS
7	V2372901	KIT 3 ID360 MTB SPRINGS
8	V3780101	HG9 Alloy MTB Freewheel Body ID360
8	V3740101	XD MTB Freewheel Body ID360
8	V3990101	MicroSpline MTB Freewheel Body ID360
8	V3790101	HG9 Steel MTB Freewheel Body ID360
9	V2373001	KIT ADJUST. SYSTEM QRM AUTO ID360 for 17x30x7 bearing
10	V2375701	Kit ID360 148 DCL axle with circlip

OPTIONS

5	V2372801	KIT ID360 2x40 TEETH RATCHETS + MTB SPRING + GREASE + PAD
---	----------	---

ADAPTERS

11	V2510701	ID360V2RrAxleAdapt12x142/148
----	----------	------------------------------

MAVIC MX801 CLASSIC DISC

COMPATIBILITY

Rear axle: 12mm thru axle, convertible to Quick Release with optional adapters and axle replacement	
Maximum spoke width: 2,4mm	
Freewheel: Shimano HG9, XD or Micro Spline	
Rear axle: 12x148 Boost thru axle	
Front axle: 15x110 Boost thru axle	

Specifications

WHEEL HUB

- Front and rear bodies : aluminum
 - Axle material : aluminum
- Instant Drive 360 freewheel technology
QRM Auto bearing preload technology
- Axles : Front 15X110 Boost ; Rear 12X148 Boost

VERSIONS

- Disc standard : 6 Bolts or Center Lock
 - Hub width : Boost only (front 110, rear 148)
- 28 & 32 holes

WHEEL WEIGHTS