

ASTM CATEGORY 2 : road and offroad with jumps less than 15cm

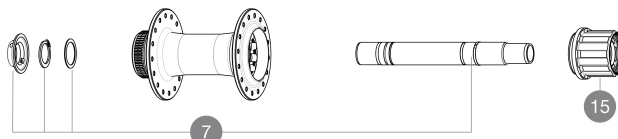
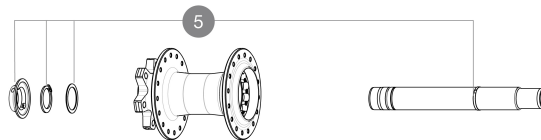
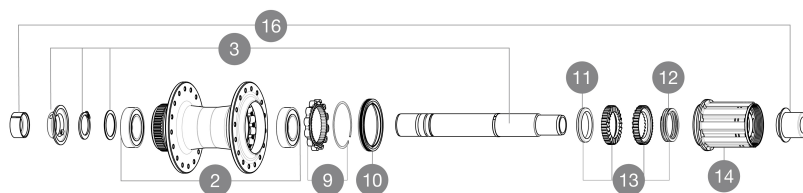
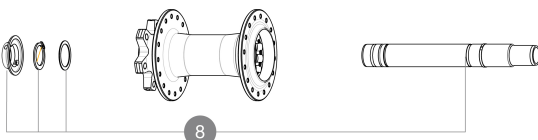
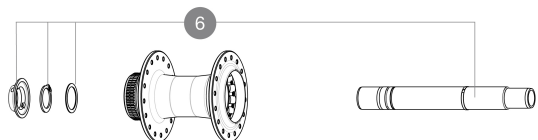
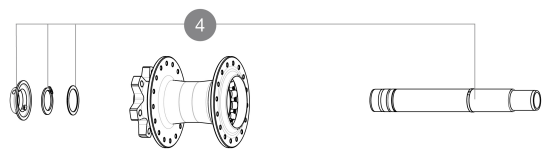
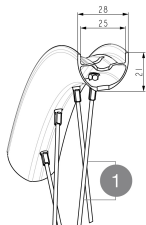
Perno anteriore: convertibile da perno passante da 15 mm in un sistema a bloccaggio rapido con adattatori inclusi

Recommended tire sizes: 28 to 64 mm (1.1" to 2.5")

Boost: Torque Caps (V2374401)

For a longer longevity of the wheel, Mavic recommends that the total weight supported by the wheels doesn't exceed 180kg, E-bike included

## REFERENZE RUOTE



## SPOKES

1 V00062431 Kit 16 ft/rr Jbent bk rd spk 293 29"+np

## HUB SHELLS

2	M40076	HUB BEARINGS 17x30x7 6903 x 2
4	V2372101	KIT ID360 135/142 D6T AXLE WITH CLIP
	V2372201	KIT ID360 148 D6T AXLE WITH CLIP
6	V2375701	Kit ID360 148 DCL axle with circlip
7	V2373401	KIT ID360 135/142 DCL L1 AXLE WITH CLIP
9	V2252701	KIT ID360 INSERT SHAPED EAR LOBE > 2017
10	V00063631	Kit ID360 seal version 2 (larger)
11	V2375401	KIT ID360 MTB 24T 3 NOISE REDUCING PADS
12	V2372901	KIT 3 ID360 MTB SPRINGS
13	V2375201	KIT ID360 24 TEETH 2 RATCHET + MTB SPRING + PAD (specific)
14	V3430101	HG11 Freewheel Body ID360

## OPTIONS

V2373001 KIT ADJUST. SYSTEM QRM AUTO ID360 for 17x30x7 bearing

## ADAPTERS

16	V2510701	ID360 EVO REAR AXLE ADAPTERS 12x142mm DCL & D6T
	V2510901	ID360 EVO REAR AXLE ADAPTERS 12x135mm DCL & D6T
	V2510801	ID360 EVO REAR AXLE ADAPTERS 9x135mm DCL & D6T

**MAVIC** **E-SPEEDCITY 1 700****VENDUTO CON**

User guide	
Rondella per cassetta M9 non montata sulla ruota posteriore	
Flap	
Rondella per cassetta M9 non montata sulla ruota posteriore	
User guide	
User guide	
Flap	

**COMPATIBILITY**

Freewheel: Shimano/Sram, convertible to Campagnolo ED11, N3W and XD-R with optional driver bodies	
Front axle: 12mm thru axle, easily convertible to quick release with optional adapters. Convertible to 15mm with complete axle replacement	
Corpo ruota libera: convertibile SRAM XD strada (kit V2580101 venduto separatamente)	
Corpo ruota libera: convertibile SRAM XD strada (kit V2580101 venduto separatamente)	
Rear axle: 12mm thru axle, convertible to Quick Release with optional adapters and axle replacement	
Corpo ruota libera: convertibile SHIMANO HG light strada (kit V3850101 venduto separatamente)	
Corpo ruota libera: convertibile SHIMANO HG light strada (kit V3850101 venduto separatamente)	
Corpo ruota libera: convertibile SHIMANO MS (kit V3990101 venduto separatamente)	
Corpo ruota libera: convertibile SHIMANO MS (kit V3990101 venduto separatamente)	
Front axle: 12mm thru axle, easily convertible to quick release with optional adapters. Convertible to 15mm with complete axle replacement	
Front axle: 12mm thru axle, easily convertible to quick release with optional adapters. Convertible to 15mm with complete axle replacement	
Corpo ruota libera: convertibile CAMPAGNOLO N3W (kit V4270101 venduto separatamente)	
Corpo ruota libera: convertibile CAMPAGNOLO N3W (kit V4270101 venduto separatamente)	
ID360 Shimano Micro Spline alloy freewheel body (V3990101)	
Corpo ruota libera ID360 Sram XD (V3740101)	
Perno posteriore: solo per i dadi di fissaggio (inclusi), filettatura M9x1	
Perno posteriore: solo per i dadi di fissaggio (inclusi), filettatura M9x1	
ID360 Shimano Micro Spline alloy freewheel body (V3990101)	