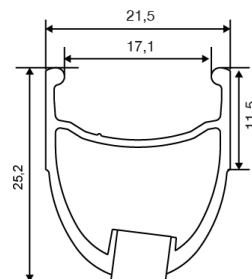
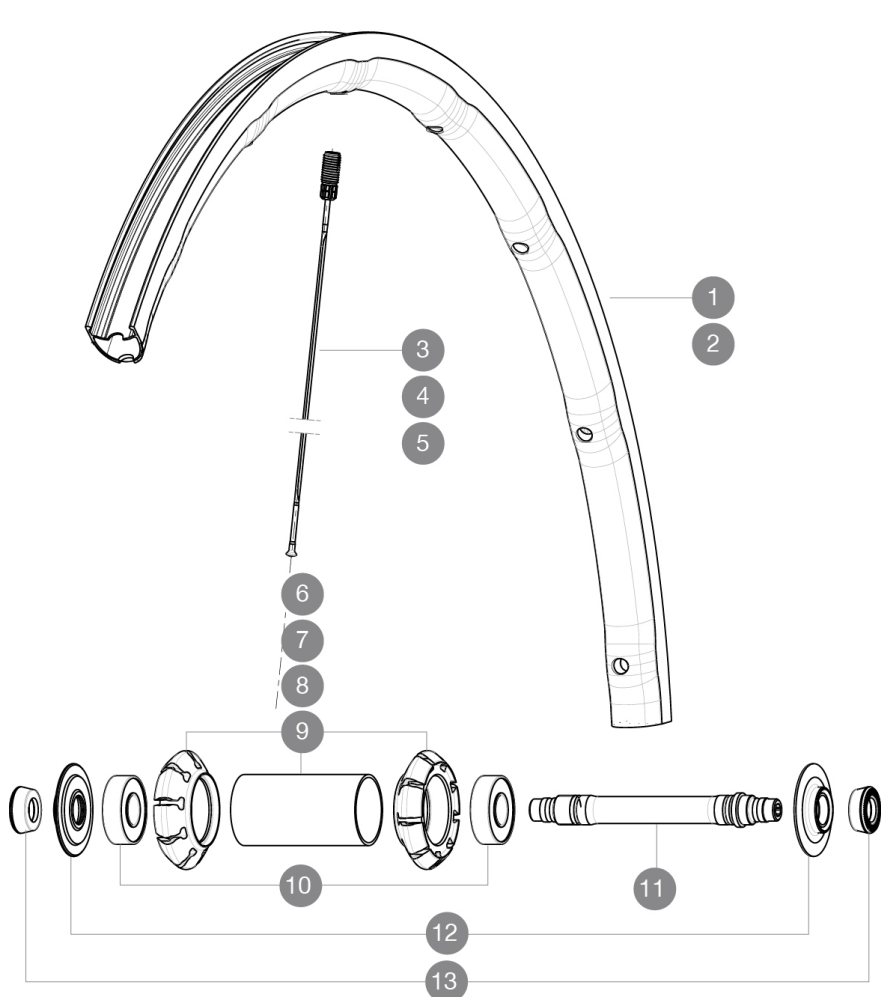


ASTM CATEGORY 2 : road and offroad with jumps less than 15cm
 For a longer longevity of the wheel, Mavic recommends that the total weight supported by the wheels doesn't exceed 120kg, bike included
 Recommended tyre sizes: 25 to 52 mm
 Max. Pressure: 25mm 7.7 bars - 110 PSI

参照ホイール

F41204	Ksyrium Elite 16Ft White	F41202	Ksyrium Elite 16Ft Red
F41201	Ksyrium Elite 16Ft Black	F41203	Ksyrium Elite 16Ft Blue



RIMS



バルブ穴径 (MM) : 6,5 :

1	V2402210	KIT FRONT RIM KSYRIUM ELITE 2016 BLACK for BLACK/RED/BLUE
2	V2404710	FRT RIM KSYRIUM ELITE WHITE 16

ADAPTERS

13	35117301	FRONT OR REAR FORK REST KIT R-SYS 2013
----	----------	--

SPOKES

3	V2271601	KIT 9 FRONT SPOKES 283,5mm KSYRIUM ELITE for BLACK/WHITE
4	V2272201	KIT 9 FRONT SPOKES 283,5mm KSYRIUM ELITE RED
5	V2271901	KIT 9 FRONT SPOKES 283,5mm KSYRIUM ELITE BLUE

HUB SHELLS

6	N/A	HUB BODY
7	N/A	HUB BODY
8	N/A	HUB BODY
9	N/A	HUB BODY
10	M40318	HUB BEARING KIT 6001
11	30870001	FRONT AXLE ROAD RIM BRAKING QRM +
12	12038201	KSYRIUM ELITE 11 HUB CAP AND ADJUST.NUT

MAVIC

Ksyrium Elite

付属品

BR301 quick releases	
BR301 quick releases	
Multifunction adjustment wrench	
User guide	
Multifunction adjustment wrench	
User guide	

COMPATIBILITY

Freewheel: Shimano/Sram, convertible to Campagnolo with optional driver body	
Front axle: Quick Release only	
Rear axle: Quick Release only	

Specifications

リム

- Material : Mxstal
- Height : front 24mm, rear 26 asymmetrical
- Joint : SUP
- Drilling : Fore
- Brake track : UB Control
- Weight reduction : ISM 4D
- Valve hole diameter : 6.5 mm
- Material : Mxstal
- Tyre : clincher
- Height : front 24mm, rear 26 asymmetrical
- ETRTO size : 622x17C
- Recommended tyre sizes : 25 to 52 mm
- Joint : SUP
- Drilling : Fore
- Brake track : UB Control
- Weight reduction : ISM 4D
- Valve hole diameter : 6.5 mm
- Tyre : clincher
- Internal width : 17 mm
- ETRTO size : 622x17C

スポーク

- Material : steel
- Shape : straight pull, bladed, front double butted
- Nipples : Fore integrated aluminum
- Count : front 18, rear 20
- Lacing : front radial, rear Isopulse
- Material : steel
- Shape : straight pull, bladed, front double butted
- Nipples : Fore integrated aluminum
- Count : front 18, rear 20
- Lacing : front radial, rear Isopulse

ホイールハブ

- Front and rear bodies : aluminum
- Axle material : aluminum
- Adjustable sealed cartridge bearings
- Freewheel : FTS-L steel
- Front and rear bodies : aluminum
- Axle material : aluminum
- Adjustable sealed cartridge bearings
- Freewheel : FTS-L steel

VERSIONS

- Color : Black or Black/Red or Black/Blue or Black/White

ホイールの重み

ホイール重量 (クイックリリースおよびクリンチャー/チューブラーを除く) (g) : 680