



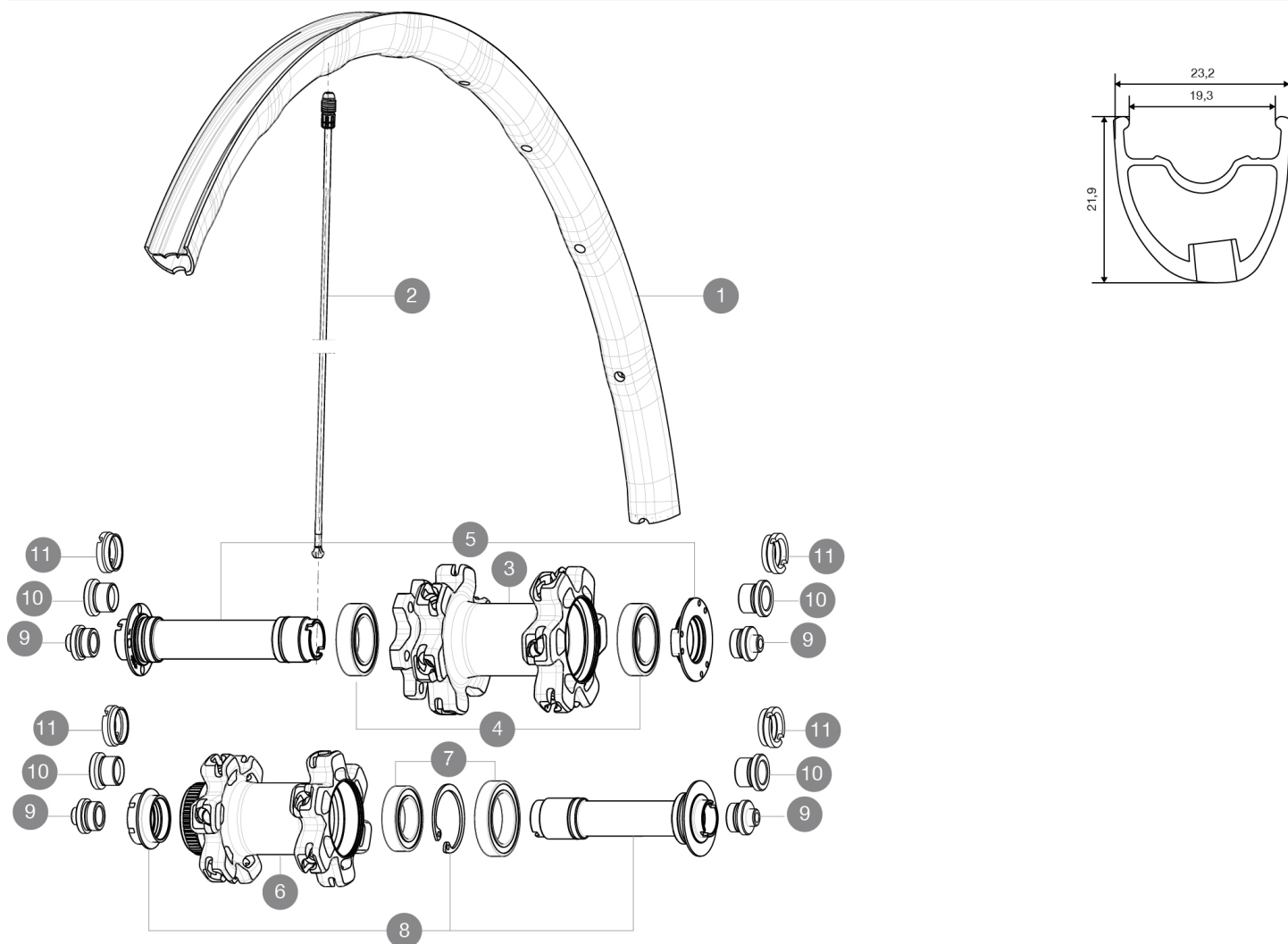
# Ksyrium Pro Disc Allroad

## 参照ホイール

F44301 KsyProDiscAllroadFt CL

F43601 KsyProDiscAllroadFt INT

ASTM CATEGORY 2 : road and offroad with jumps less than 15cm  
For a longer longevity of the wheel, Mavic recommends that the total weight supported by the wheels doesn't exceed 120kg, bike included  
Recommended tyre sizes: 28 to 62 mm  
Max. Pressure: 28mm 7.7 bars - 110 PSI / 30mm 5.8 bars - 85 PSI



## RIMS



バルブ穴径 (MM) : 6,5 :

1	V2402410	FRONT RIM KSYRIUM PRO ALLROAD
---	----------	-------------------------------

## SPOKES

2	V2272501	12 FRT + REAR NON-DRIVE SIDE SPOKES 291,5mm KSYRIUM PRO ALLR
---	----------	--

## HUB SHELLS

3	N/A	HUB BODY
4	99688501	BEARING KIT 9/15 D6T HUB
5	V2252301	MY16 FRONT AXLE ROAD DISC 9/12/15 INT
6	N/A	HUB BODY
7	99688601	BEARING KIT 9/15 DCL HUB 20x32x7 6804 + 25x37x7 6805
8	V2252401	MY16 FRONT AXLE ROAD DISC 9/12/15 CENTER LOCK



## ADAPTERS

9	B4104301	9mm FT road Axle Adapters 16
10	B4104201	12mm FT road Axle Adapters 16
11	B4104401	15mm FT Road Axle Adapters 16



# Ksyrium Pro Disc Allroad

## 付属品

1 bottle of Mavic Sealant	
1 bottle of Mavic Sealant	
UST valve and accessories	
Front 12 mm adapters	
Specific disc bolts	
Multifunction adjustment wrench	
User guide	
Front 12 mm adapters (B4104201) 1	
Rear 12x142mm adapters for Instant Drive 360 (B49 896 01 for ID360 6T, B49 899 01 for ID360 CL) 1	
UST valve and accessories	
Specific disc bolts	
Multifunction adjustment wrench	
User guide	

## COMPATIBILITY

Freewheel: Shimano/Sram, convertible to Campagnolo and XD-R with optional driver bodies	
Front axle: convertible from 12mm thru axle to quick release or 15mm thru axle with optional adapters	
Rear axle: 12mm thru axle, convertible to Quick Release with optional adapters	

## Specifications

### リム

- Material : Mxtral
- Height : 26mm, asymmetrical
- Joint : SUP
- Drilling : Fore
- Disc brake specific profile
- Weight reduction : ISM 4D
- Valve hole diameter : 6.5 mm
- Tyre : UST Tubeless and tubetype
- Material : Mxtral
- ETRTO size : 622x19C
- Height : 26mm, asymmetrical
- Recommended tyre sizes : 28 to 62 mm
- Joint : SUP
- Drilling : Fore
- Disc brake specific profile
- Weight reduction : ISM 4D
- Valve hole diameter : 6.5 mm
- Tyre : UST Tubeless and tubetype
- Internal width : 19 mm
- ETRTO size : 622x19C

### ホイールハブ

- Front and rear bodies : aluminum
- Axle material : aluminum
- Sealed cartridge bearings
- Freewheel : Instant Drive 360
- Front and rear bodies : aluminum
- Front : Quick release, 12 thru and 15 thru compatible
- Axle material : aluminum
- Rear : 12x142 (convertible to quick release with optional adapters)
- Sealed cartridge bearings
- Freewheel : Instant Drive 360
- Front : Quick release, 12 thru and 15 thru compatible
- Rear : 12x142 (convertible to quick release with optional adapters)

### VERSIONS

- Color : Black only
- Disc standard : 6 Bolts or Center Lock(R)

### ホイールの重み

ホイール重量 ( クイックリリースおよびクリンチャー/チューブラーを除く ) ( g ) : 770