



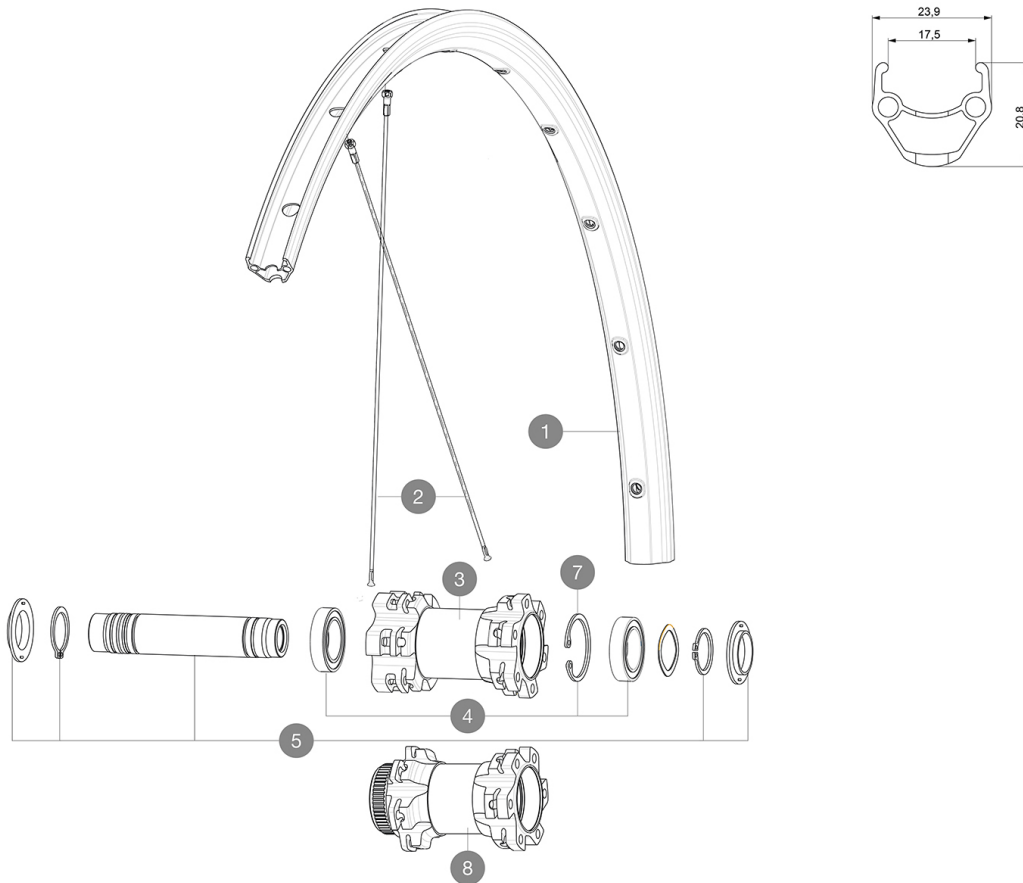
Aksium Disc TA

参照ホイール

F73871 Aks18D6B Ft12x100SV

F73881 Aks18DCLFt12x100SV

ASTM A2106 2 : 15 + 15
 120
 25 32 mm
 23mm 8.7 bars - 125 psi, 25mm 7.7 bars - 110 psi



RIMS



&NBSP;:

- 1 V2290815 KIT FRONT/REAR RIM AKSIUM ONE DISC

SPOKES

- 2 V2277201 KIT 12 FRONT 9/12mm AKSIUM DISC ALLROAD 700 ROUND SPOKE 296m

HUB SHELLS

- 4 99688501 BEARING KIT 9/15 D6T HUB
- 5 V2371801 KIT FRONT AXLE 12mm L1 + WAVED WASHER + CLIP

OPTIONS

- V2371901 KIT FRONT AXLE MTB L1 QRM AUTO 15x100mm

ADAPTERS

- V2390801 KIT 2 FORK RESTS FRONT AXLE MTB QRM AUTO
- V2680301 "Kit Ft Road Adapter 12 >> 9mm"



Aksium Disc TA

付属品

BR101 (M40350 M40351 M40352 MTB)	

COMPATIBILITY

12mm thru axle, convertible to Quick Release with optional adapters	

Specifications

リム

- S6000 21 mm
- \bar{A}
- \bar{A} H2
- 6.5 mm
- 17 mm
- ETRTO : 622x17C

スポーク

- 24
- 2A

ホイールハブ

- QRMA
- QRM
- Auto
- 360

VERSIONS

- 6A
- RA

ホイールの重み

905