

参照ホイール

ASTM CATEGORY 2 : road and offroad with jumps less than 15cm

æ□□ā°□ā□□¿ā□□ā□□µā□□ā□°i¼□ā' 52mm-

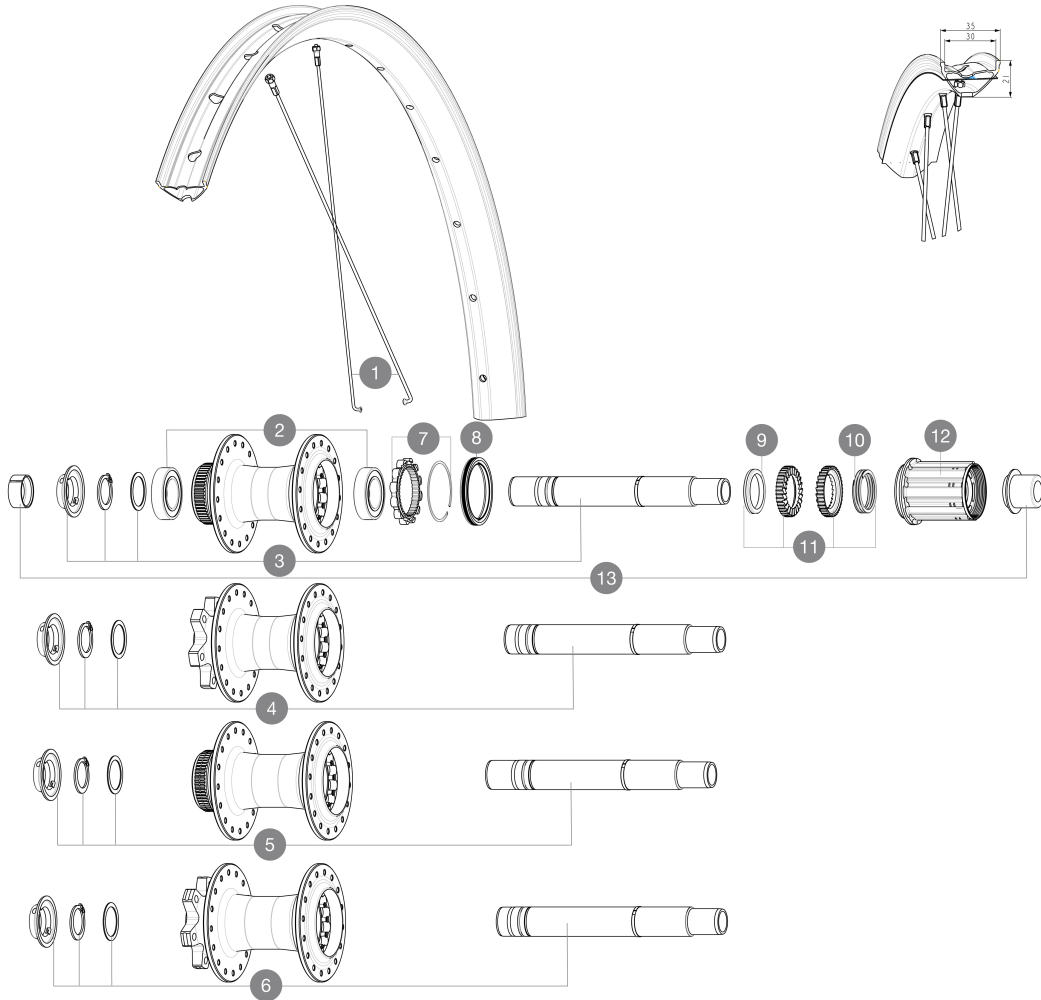
æ□□āµ§ç°æ°□ā□§2.35Bar/34PSI

Recommended tire sizes: 50mm to 76mm (2.0" to 3.0")

æ□□āµ§ā□□¿ā□□ā□□µā□□ā□°i¼□ā' 125mm-

æ□□āµ§ç°æ°□ā□§1.25Bar/18PSI

For a longer longevity of the wheel, Mavic recommends that the total weight supported by the wheels doesn't exceed 180kg, E-bike included



SPOKES

1	V00062531	Kit 16ft/rr Jbent bk rd spk275 27,5"+np
---	-----------	---

HUB SHELLS

2	M40076	HUB BEARINGS 17x30x7 6903 x 2
3	V2373401	KIT ID360 135/142 DCL L1 AXLE WITH CLIP
4	V2372101	KIT ID360 135/142 D6T AXLE WITH CLIP
5	V2375701	Kit ID360 148 DCL axle with circlip
6	V2372201	KIT ID360 148 D6T AXLE WITH CLIP
7	V2252701	KIT ID360 INSERT SHAPED EAR LOBE > 2017
8	V00063631	Kit ID360 seal version 2 (larger)
9	V2375401	KIT ID360 MTB 24T 3 NOISE REDUCING PADS
10	V2372901	KIT 3 ID360 MTB SPRINGS
11	V2375201	KIT ID360 24 TEETH 2 RATCHET + MTB SPRING + PAD (specific)
12	V3430101	HG11 Freewheel Body ID360

OPTIONS

V2373001	KIT ADJUST. SYSTEM QRM AUTO ID360 for 17x30x7 bearing
----------	---

ADAPTERS

13	V2510701	ID360 EVO REAR AXLE ADAPTERS 12x142mm DCL & D6T
	V2510901	ID360 EVO REAR AXLE ADAPTERS 12x135mm DCL & D6T
	V2510801	ID360 EVO REAR AXLE ADAPTERS 9x135mm DCL & D6T



E-SPEEDCITY 1 650B

付属品

User guide	
<p> 取扱説明書 取扱説明書 取扱説明書 取扱説明書 </p>	
User guide	
User guide	
<p> 取扱説明書 取扱説明書 取扱説明書 </p>	

COMPATIBILITY

<p>Freewheel: Shimano/Sram, convertible to Campagnolo ED11, N3W and XD-R with optional driver bodies</p>	
<p>Front axle: 12mm thru axle, easily convertible to quick release with optional adapters. Convertible to 15mm with complete axle replacement</p>	
<p>Rear axle: 12mm thru axle, convertible to Quick Release with optional adapters and axle replacement</p>	
<p> 前軸: 12mm thru axle, easily convertible to quick release with optional adapters. Convertible to 15mm with complete axle replacement SRAM XD 101 12mm thru axle quick release adapter (SRAM V2580101) </p>	
<p> 前軸: 12mm thru axle, easily convertible to quick release with optional adapters. Convertible to 15mm with complete axle replacement SRAM XD 101 12mm thru axle quick release adapter (SRAM V2580101) </p>	
<p> 前軸: 12mm thru axle, easily convertible to quick release with optional adapters. Convertible to 15mm with complete axle replacement SHIMANO HG 101 12mm thru axle quick release adapter (SHIMANO V3850101) </p>	
<p> 前軸: 12mm thru axle, easily convertible to quick release with optional adapters. Convertible to 15mm with complete axle replacement SHIMANO HG 101 12mm thru axle quick release adapter (SHIMANO V3850101) </p>	
<p> 前軸: 12mm thru axle, easily convertible to quick release with optional adapters. Convertible to 15mm with complete axle replacement SHIMANO MS 101 12mm thru axle quick release adapter (SHIMANO V3990101) </p>	
<p> 前軸: 12mm thru axle, easily convertible to quick release with optional adapters. Convertible to 15mm with complete axle replacement SHIMANO MS 101 12mm thru axle quick release adapter (SHIMANO V3990101) </p>	
<p>Front axle: 12mm thru axle, easily convertible to quick release with optional adapters. Convertible to 15mm with complete axle replacement</p>	
<p>Front axle: 12mm thru axle, easily convertible to quick release with optional adapters. Convertible to 15mm with complete axle replacement</p>	
<p> 前軸: 12mm thru axle, easily convertible to quick release with optional adapters. Convertible to 15mm with complete axle replacement CAMPAGNOLO N3W 101 12mm thru axle quick release adapter (CAMPAGNOLO V4270101) </p>	
<p> 前軸: 12mm thru axle, easily convertible to quick release with optional adapters. Convertible to 15mm with complete axle replacement CAMPAGNOLO N3W 101 12mm thru axle quick release adapter (CAMPAGNOLO V4270101) </p>	
<p>ID360 Shimano Micro Spline alloy freewheel body ([V3990101])</p>	
<p> ID360 Shimano Micro Spline alloy freewheel body ([V3990101]) XD 101 12mm thru axle quick release adapter (SRAM V2580101) </p>	