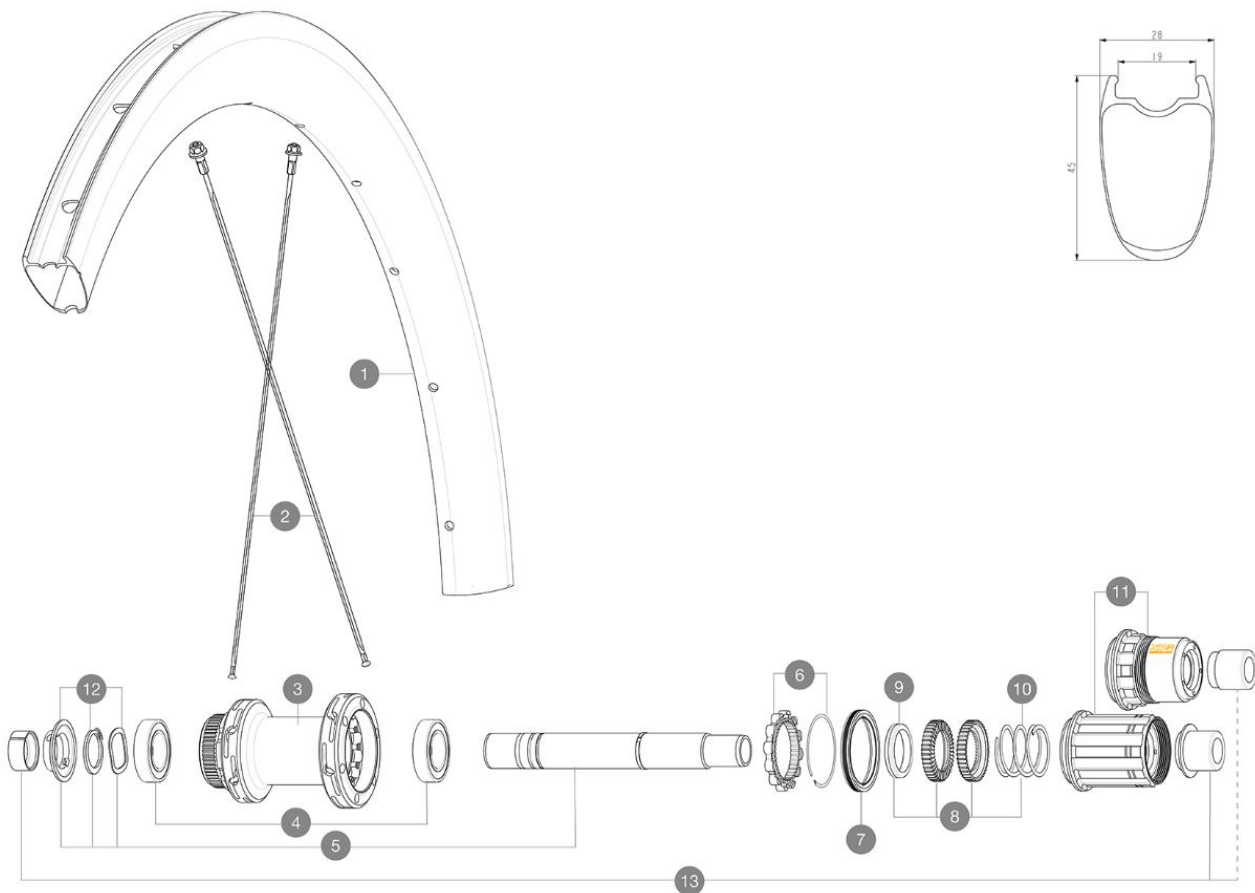


MAVIC COSMIC SL 45 LTD

参照ホイール

ASTM CATEGORY 2 : road and offroad with jumps less than 15cm
 For a longer longevity of the wheel, Mavic recommends that the total weight supported by the wheels doesn't exceed 120kg, bike included
 Recommended tire sizes: 25 to 32 mm
 Max. Pressure: see indication on wheel and tire. If they differ, use the lowest of the 2



RIMS



&NBSP;:

1	V00062931	Kit Front/Rear rim Cosmic SL45 Ltd
	V3720101	25mm UST Tape for 19 to 22mm Road Rims

SPOKES

2	V4162901	Kit 12 Front/Rear Cosmic SL 45 Disc butted stainless spoke 2
---	----------	--

HUB SHELLS

3	N/A	HUB BODY
4	M40076	HUB BEARINGS 17x30x7 6903 x 2
5	V2373401	KIT ID360 135/142 DCL L1 AXLE WITH CLIP
6	V2252701	KIT ID360 INSERT SHAPED EAR LOBE > 2017
7	V00063631	Kit ID360 seal version 2 (larger)
8	V2251701	ID360 2 RATCHETS + SPRING + GREASE
9	V2500501	Kit 3 ID360 pad for noise reduction
10	V2251801	KIT 3 ID360 ROAD SPRINGS
11	V3430101	HG11 Freewheel Body ID360
11	V2580101	FREEHUB BODY XD Road ID360
12	V2373001	KIT ADJUST. SYSTEM QRM AUTO ID360 for 17x30x7 bearing

ADAPTERS

13	V2510701	ID360 EVO REAR AXLE ADAPTERS 12x142mm DCL & D6T
	V2510901	ID360 EVO REAR AXLE ADAPTERS 12x135mm DCL & D6T
	V2510801	ID360 EVO REAR AXLE ADAPTERS 9x135mm DCL & D6T



COSMIC SL 45 LTD

付属品

Front QR adapters	
Rear QR adapters for Instant Drive 360 (B49 894 01)	
UST valve and accessories (129 838 01)	
Pre-installed tubeless rim tape	
User guide	

COMPATIBILITY

Freewheel: Shimano/Sram, convertible to Campagnolo ED11, N3W and XD-R with optional driver bodies	
Front axle: 12x100 thru axle, easily convertible to quick release with included adapters. Not compatible with 15mm through axles.	
Rear axle: 12mm thru axle, convertible to Quick Release with included adapters	

Specifications

- リム**
- Material : 100% carbon fiber
 - Height : 45 mm
 - Drilling : traditional
- Disc brake specific profile
- Tire : UST Tubeless and tubetype
 - Internal width : 19 mm
 - ETRTO size : 622x19TC
- UST tubeless technology
- スポーク**
- Material : steel
 - Shape : straight pull, flat, double butted
 - Nipples : brass, ABS
 - Count : 24 front and rear
 - Lacing : front and rear crossed 2, contactless

- ホイールハブ**
- Front and rear bodies : aluminum
 - Axle material : aluminum
 - Front : Quick release and 12x100 through axle compatible
 - Rear : Quick Release, 12x142 and 12x135 compatible
- Infinity hubs
- Instant Drive 360 freewheel technology
- QRM Auto bearing preload technology

- VERSIONS**
- Disc standard : Center Lock® only
 - Freewheel : Shimano/Sram

ホイールの重み
845