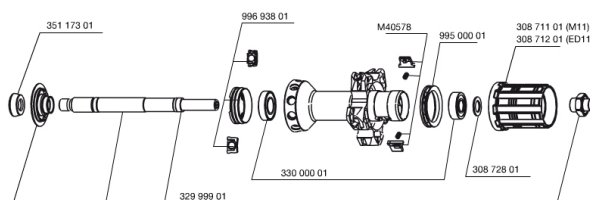
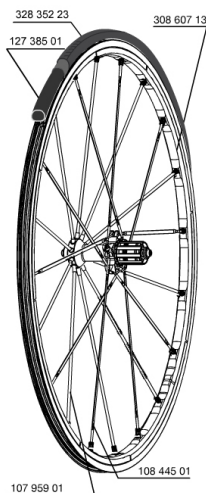


参照ホイール

328276 R-SYS 013 ED11 WTS

328275 R-SYS 013 M11 WTS



RIMS



&NBSP;:

30860713	REAR RIM R-SYS 12
----------	-------------------

SPOKES

10795901	10 SILVER R-SYS CARBON REAR SPK.284mm
99693801	2 SILVER TRACOMP RINGS + CLIPS
10844501	10 RED R-SYS 010 ALLOY FW REAR SPOKES 295mm

HUB SHELLS

M40578	FTSL PAWLS KIT (ROAD WHEELS)
32999901	REAR AXLE KIT R-SYS 2013
30871201	FTS-L FREEWHEEL BODY ED11 2013 (8 or 9mm axle compatible)
33000001	REAR HUB B9+6901 BEARINGS 2013
30871101	FTS-L FREEWHEEL BODY HG11 2013 (8 or 9mm axle compatible)
99500001	FTSL/FTSX FREEHUB BODY SEAL
30872801	SET OF 3 INTERNAL SILVER SPACERS 9mm FTS-L 2013

MAINTENAN

CE

12738501	Road Innertube Presta 48mm
----------	----------------------------

TYRES

32835223	YksionProWhite23PowerLink 23
----------	------------------------------

ADAPTERS

35117301	FRONT OR REAR FORK REST KIT R-SYS 2013
----------	--

MAVIC R-Sys

付属品

BR601 Â¿Â¿Â¿Â¿Â¿Â¿Â¿Â¿Â¿Â¿Â¿Â¿	
BR601 Â¿Â¿Â¿Â¿Â¿Â¿Â¿Â¿Â¿Â¿Â¿Â¿	
Â¿Â¿Â¿Â¿Â¿Â¿	
Â¿Â¿Â¿Â¿Â¿Â¿	
Â¿Â¿Â¿Â¿Â¿Â¿Â¿Â¿Â¿Â¿Â¿Â¿ Â¿Â¿Â¿Â¿Â¿Â¿Â¿Â¿Â¿	
Â¿Â¿Â¿Â¿Â¿Â¿Â¿Â¿Â¿Â¿Â¿Â¿ Â¿Â¿Â¿Â¿Â¿Â¿Â¿Â¿	
Â¿Â¿Â¿Â¿Â¿Â¿	
Â¿Â¿Â¿Â¿Â¿Â¿	
Â¿Â¿Â¿Â¿Â¿Â¿Â¿Â¿Â¿Â¿	
Â¿Â¿Â¿Â¿Â¿Â¿Â¿Â¿	
Â¿Â¿Â¿Â¿Â¿Â¿	
Â¿Â¿Â¿Â¿Â¿Â¿	

Specifications

リム

Â¿Â¿Â¿ MaxtalÂ¿Â¿Â¿Â¿Â¿
 Â¿Â¿Â¿ MaxtalÂ¿Â¿Â¿Â¿Â¿
 Â¿Â¿Â¿Â¿Â¿Â¿Â¿Â¿Â¿Â¿Â¿Â¿
 Â¿Â¿Â¿Â¿Â¿Â¿
 Â¿Â¿Â¿Â¿Â¿Â¿ 22 mmÂ¿Â¿Â¿ 25
 mmÂ¿Â¿Â¿Â¿Â¿
 Â¿Â¿Â¿Â¿Â¿Â¿ SUP
 Â¿Â¿Â¿Â¿Â¿Â¿ 22 mmÂ¿Â¿Â¿ 25
 mmÂ¿Â¿Â¿Â¿Â¿
 Â¿Â¿Â¿Â¿Â¿Â¿ SUP
 Â¿Â¿Â¿Â¿Â¿Â¿Â¿ FORE
 Â¿Â¿Â¿Â¿Â¿Â¿
 Â¿Â¿Â¿Â¿Â¿Â¿ UBAÂ¿Â¿Â¿Â¿
 Â¿Â¿Â¿Â¿Â¿Â¿Â¿Â¿Â¿ FORE
 Â¿Â¿Â¿Â¿Â¿Â¿
 Â¿Â¿Â¿Â¿Â¿ ISM
 Â¿Â¿Â¿Â¿Â¿Â¿ 6.5 mm
 Â¿Â¿Â¿Â¿Â¿Â¿ UBAÂ¿Â¿Â¿Â¿
 Â¿Â¿Â¿Â¿Â¿Â¿
 Â¿Â¿Â¿Â¿Â¿ ISM
 Â¿Â¿Â¿Â¿Â¿Â¿ 6.5 mm
 Â¿Â¿Â¿Â¿Â¿Â¿Â¿Â¿
 ETRTO Â¿Â¿Â¿Â¿ 622x15C
 ETRTO Â¿Â¿Â¿Â¿ 622x15C
 Â¿Â¿Â¿Â¿Â¿Â¿ 19Â¿ 32 mm
 Â¿Â¿Â¿Â¿Â¿Â¿ 19Â¿ 32 mm

ホイールハブ

Â¿Â¿Â¿Â¿/Â¿Â¿Â¿Â¿Â¿Â¿
 Â¿Â¿Â¿Â¿/Â¿Â¿Â¿Â¿Â¿Â¿
 Â¿Â¿Â¿Â¿Â¿
 Â¿Â¿Â¿Â¿/Â¿Â¿Â¿Â¿Â¿
 Â¿Â¿Â¿
 QRM+
 Â¿Â¿Â¿Â¿/Â¿Â¿Â¿Â¿
 Â¿Â¿Â¿
 FTS-LÂ¿Â¿Â¿
 QRM+
 FTS-LÂ¿Â¿Â¿

ホイールの重み

ホイール重量 (クイックリリ-
 スおよびクリンチャー/チュー
 ブラーを除く) (g) : 780

スポーク