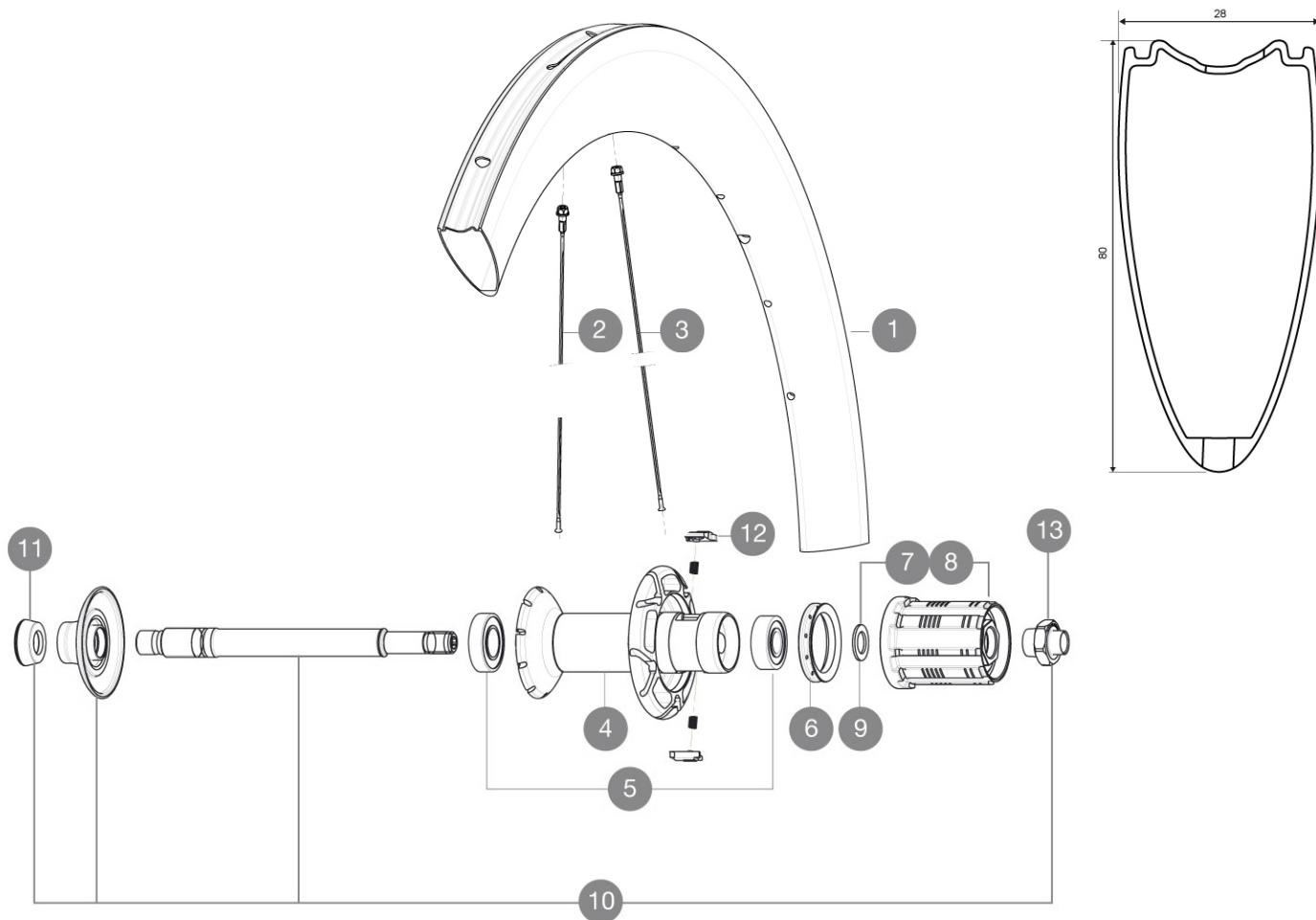


参照ホイール

352083 COSMIC CXR 60 Tub ED11 WTS

352082 COSMIC CXR 60 Tub M11 WTS



## RIMS



&NBSP;:

1	32979313	KIT REAR RIM CXR 60 TUBULAR - while stock last
1	V2403613	REAR RIM CXR60T MY16

## SPOKES

2	32979601	10 BLK AERO SPOKES FRONT/NON DRIVE SIDE CXR 60 T 255mm
3	32979501	10 BLK AERO SPOKES DRIVE SIDE CXR 60 T 252mm

## HUB SHELLS

4	N/A	HUB BODY
5	33000001	REAR HUB B9+6901 BEARINGS 2013
6	99500001	FTSL/FTSX FREEHUB BODY SEAL
7	30871101	FTS-L FREEWHEEL BODY HG11 2013 (8 or 9mm axle compatible)
8	30871201	FTS-L FREEWHEEL BODY ED11 2013 (8 or 9mm axle compatible)
9	30872801	SET OF 3 INTERNAL SILVER SPACERS 9mm FTS-L 2013
10	V2250301	KIT REAR AXLE AERO HUB CXR/CC40/CC SLS/CC SLE/COSMIC
12	M40578	FTSL FREEHUB KIT (ROAD WHEELS)
13	V2373101	KIT NUT FOR ROAD ALLOY THROUGH AXLE 9mm

## ADAPTERS

11	35117301	FRONT OR REAR FORK REST KIT R-SYS 2013
----	----------	--

# MAVIC Cosmic CXR 60 T

## 付属品

BR601 Â¿Â¿Â¿Â¿Â¿Â¿Â¿Â¿Â¿Â¿Â¿Â¿Â¿	
Â¿Â¿Â¿Â¿Â¿Â¿Â¿	
CXRÂ¿Â¿Â¿Â¿Â¿Â¿Â¿Â¿Â¿Â¿Â¿Â¿Â¿	
Â¿Â¿Â¿Â¿Â¿Â¿Â¿Â¿Â¿Â¿Â¿	
Â¿Â¿Â¿Â¿Â¿Â¿Â¿	
Â¿Â¿Â¿Â¿Â¿Â¿Â¿	

## Specifications

### リム

Â¿Â¿Â¿ 100% 3K Â¿Â¿Â¿Â¿Â¿Â¿Â¿Â¿Â¿Â¿  
 • Â¿Â¿Â¿ : 60 mm Â¿Â¿Â¿Â¿Â¿ 27 mm Â¿  
 CX01Â¿Â¿Â¿Â¿Â¿  
 Â¿Â¿Â¿Â¿Â¿Â¿Â¿ Â¿Â¿Â¿Â¿Â¿Â¿Â¿  
 Â¿Â¿Â¿Â¿Â¿Â¿Â¿ Â¿Â¿Â¿Â¿  
 Â¿Â¿Â¿Â¿Â¿Â¿Â¿ 6.5 mm  
 Â¿Â¿Â¿Â¿Â¿Â¿Â¿  
 ETRTO Â¿Â¿Â¿Â¿ 28" Â¿Â¿Â¿Â¿Â¿  
 Â¿Â¿Â¿Â¿Â¿Â¿Â¿Â¿ 23 mm

### スポーク

Â¿Â¿Â¿Â¿Â¿Â¿  
 Â¿Â¿Â¿ Â¿Â¿Â¿Â¿Â¿Â¿Â¿Â¿Â¿Â¿  
 Â¿Â¿Â¿Â¿Â¿  
 Â¿Â¿Â¿Â¿  
 ABSÂ¿Â¿Â¿Â¿Â¿Â¿Â¿  
 Â¿Â¿Â¿ Â¿Â¿Â¿Â¿ 16Â¿Â¿Â¿ 20Â¿  
 Â¿Â¿Â¿Â¿Â¿Â¿Â¿Â¿ Â¿Â¿Â¿Â¿Â¿  
 Â¿Â¿/Â¿Â¿Â¿Â¿Â¿Â¿Â¿/2Â¿Â¿

### ホイールハブ

Â¿Â¿Â¿/Â¿Â¿Â¿  
 Â¿Â¿Â¿  
 /Â¿Â¿Â¿/Â¿Â¿  
 Â¿Â¿/Â¿Â¿  
 Â¿  
 QRM+  
 FTS-LÂ¿Â¿

### ホイールの重み

ホイール重量 ( クイックリリー  
 スおよびクリンチャー/チュー  
 ブラーを除く ) ( g ) : 880