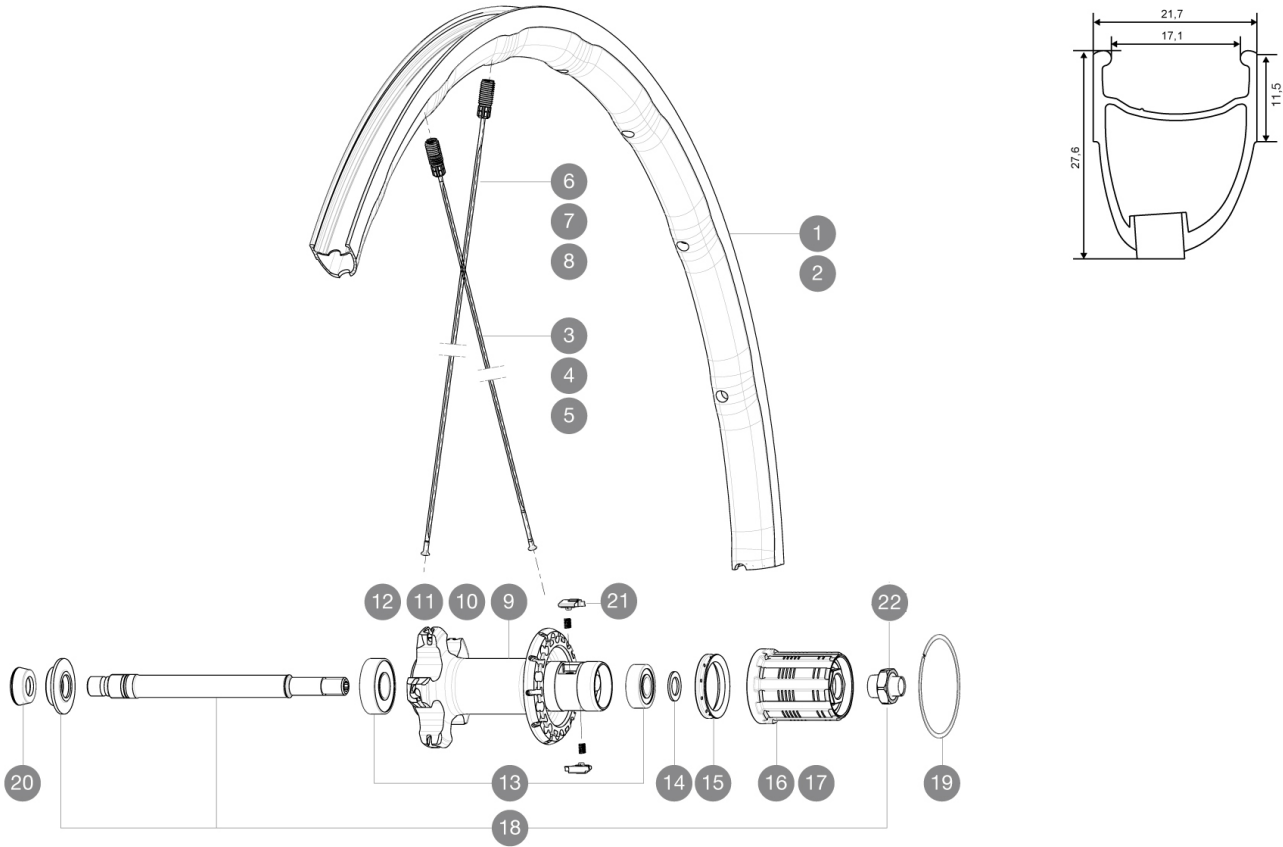


# MAVIC Ksyrium Elite

ASTM CATEGORY 2 : road and offroad with jumps less than 15cm  
 For a longer longevity of the wheel, Mavic recommends that the total weight supported by the wheels doesn't exceed 120kg, bike included  
 Recommended tyre sizes: 25 to 52 mm  
 Max. Pressure: 25mm 7.7 bars - 110 PSI

## 参照ホイール

R66704	KsyriumElite16Rr White	R66702	KsyriumElite16Rr Red
R66701	KsyriumElite16Rr Black	R66703	KsyriumElite16Rr Blue



## RIMS



バルブ穴径 (MM) : 6,5 :

1	V2402313	KIT REAR RIM KSYRIUM ELITE 2016 BLACK for BLACK/RED/BLUE
2	V2404813	REAR RIM KSYRIUM ELITE WHITE 16

## SPOKES

3	V2271701	KIT 10 REAR DRIVE SIDE SPOKES 273,5mm KSYRIUM ELITE for BLACK
4	V2272301	KIT 10 REAR DRIVE SIDE SPOKES 273,5mm KSYRIUM ELITE RED
5	V2272001	KIT 10 REAR DRIVE SIDE SPOKES 273,5mm KSYRIUM ELITE BLUE
6	V2271801	KIT 10 REAR NON-DRIVE SIDE SPOKES 299,5mm KSYRIUM ELITE
7	V2272401	KIT 10 REAR NON-DRIVE SIDE SPOKES 299,5mm KSYRIUM ELITE RED
8	V2272101	KIT 10 REAR NON-DRIVE SIDE SPOKES 299,5mm KSYRIUM ELITE BLUE

## HUB SHELLS

9	N/A	HUB BODY
10	N/A	HUB BODY
11	N/A	HUB BODY
12	N/A	HUB BODY
13	V2540101	REAR HUB B9+6001 BEARINGS 2015
14	30872801	SET OF 3 INTERNAL SILVER SPACERS 9mm FTS-L 2013
15	99500001	FTSL/FTSX FREEHUB BODY SEAL
16	30871101	FTS-L FREEWHEEL BODY HG11 2013 (8 or 9mm axle compatible)
17	30871201	FTS-L FREEWHEEL BODY ED11 2013 (8 or 9mm axle compatible)
18	V2250501	Axle Kit Ksyrium Elite / SLS
19	V2252201	KIT 2 REAR HUB RETENTION RINGS 48mm
21	M40578	FTSL PAWLS KIT (ROAD WHEELS)

22	V2373101	KIT NUT FOR ROAD ALLOY THROUGH AXLE 9mm
----	----------	---

## ADAPTERS

20	35117301	FRONT OR REAR FORK REST KIT R-SYS 2013
----	----------	--



# Ksyrium Elite

## 付属品

BR301 quick releases	
BR301 quick releases	
Multifunction adjustment wrench	
User guide	
Multifunction adjustment wrench	
User guide	

## COMPATIBILITY

Freewheel: Shimano/Sram, convertible to Campagnolo with optional driver body	
Front axle: Quick Release only	
Rear axle: Quick Release only	

## Specifications

### リム

- Material : Maxtal
- Height : front 24mm, rear 26 asymmetrical
- Joint : SUP
- Drilling : Fore
- Brake track : UB Control
- Weight reduction : ISM 4D
- Valve hole diameter : 6.5 mm
- Material : Mxxtal
- Tyre : clincher
- Height : front 24mm, rear 26 asymmetrical
- ETRTO size : 622x17C
- Recommended tyre sizes : 25 to 52 mm
- Joint : SUP
- Drilling : Fore
- Brake track : UB Control
- Weight reduction : ISM 4D
- Valve hole diameter : 6.5 mm
- Tyre : clincher
- Internal width : 17 mm
- ETRTO size : 622x17C

### スポーク

- Material : steel
- Shape : straight pull, bladed, front double butted
- Nipples : Fore integrated aluminum
- Count : front 18, rear 20
- Lacing : front radial, rear Isopulse
- Material : steel
- Shape : straight pull, bladed, front double butted
- Nipples : Fore integrated aluminum
- Count : front 18, rear 20
- Lacing : front radial, rear Isopulse

### ホイールハブ

- Front and rear bodies : aluminum
- Axle material : aluminum
- Adjustable sealed cartridge bearings
- Freewheel : FTS-L steel
- Front and rear bodies : aluminum
- Axle material : aluminum
- Adjustable sealed cartridge bearings
- Freewheel : FTS-L steel

### VERSIONS

- Color : Black or Black/Red or Black/Blue or Black/White

### ホイールの重み

ホイール重量 ( クイックリリースおよびクリンチャー/チューブラーを除く ) ( g ) : 870