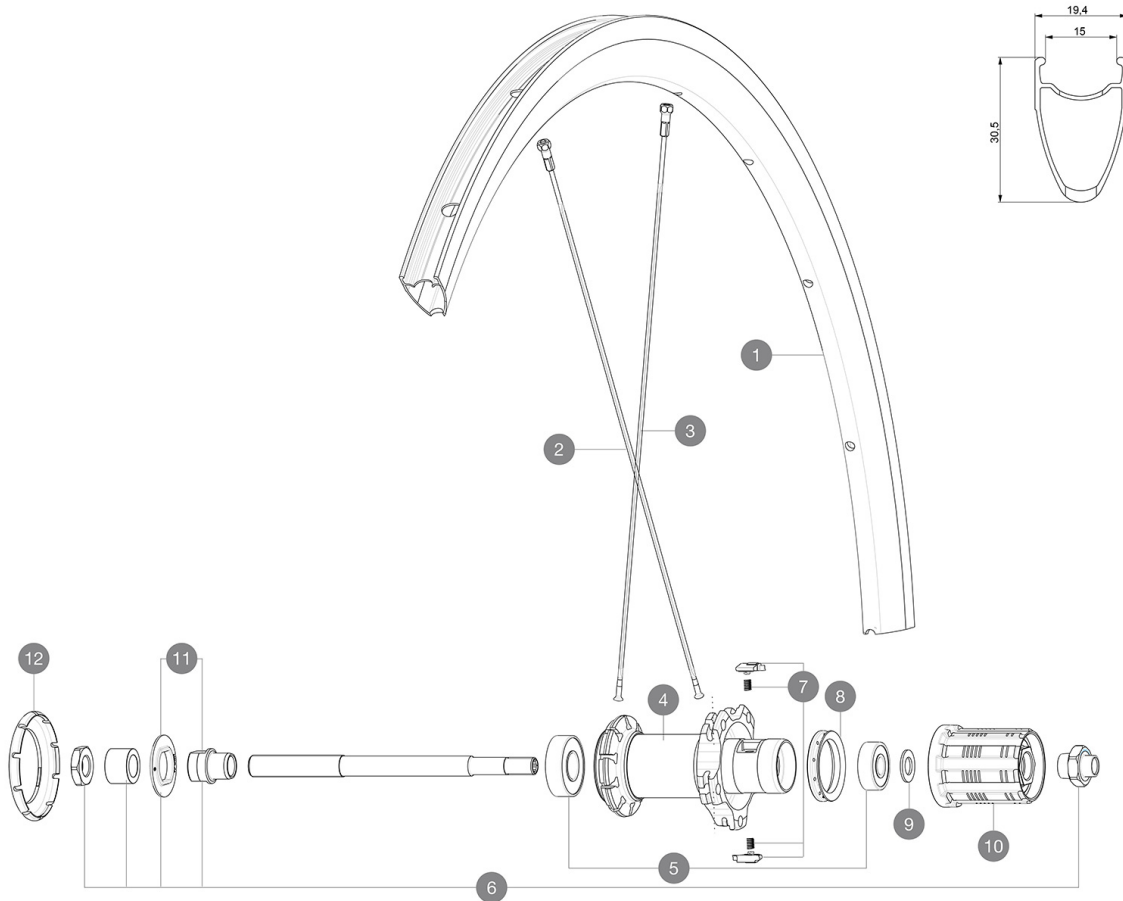


MAVIC Cosmic Elite

ASTM CATEGORY 2 : road and offroad with jumps less than 15cm
 For a longer longevity of the wheel, Mavic recommends that the total weight supported by the wheels doesn't exceed 120kg, bike included
 Recommended tyre sizes: 21 to 32 mm
 Max. Pressure: 23mm 8.7 bars - 125 psi

参照ホイール

R58001 CosmicElite16Rr



RIMS



Ä□□Ä□«Ä□□Ç©'Ä%□ï¼□MMï¼□ï¼□6,5 :

1	12017315	KIT FRONT/REAR COSMIC ELITE RIM - while stock last
1	V2732615	KIT FRONT/REAR RIM COSMIC ELITE UST

SPOKES

2	36644801	10 BLK AERO SPOKES FRONT/NON DRIVE SIDE COSMIC ELITE
3	V3660101	27mm DS COSMIC ELITE UST BUTTED SPOKE 292mm
3	36644901	10 BLK AERO SPOKES DRIVE SIDE COSMIC ELITE 292mm -while stoc

HUB SHELLS

4	N/A	HUB BODY
5	M40660	REAR HUB 608+6001 BEARINGS
6	99603901	REAR AXLE KSYRIUM EQUIPE 08
7	M40578	FTSL PAWLS KIT (ROAD WHEELS)
8	99500001	FTSL/FTSX FREEHUB BODY SEAL
9	M40067	10 SPACERS FRW/HUB BODY
10	30871201	FTS-L FREEWHEEL BODY ED11 2013 (8 or 9mm axle compatible)
10	30871101	FTS-L FREEWHEEL BODY HG11 2013 (8 or 9mm axle compatible)
11	99603801	SHORT EXPENSIBLE BEARING SUPPORTS > 2008
12	12034401	KIT 3 HUB CAPS AERO 10 SLOTS BLACK



Cosmic Elite

付属品

BR101 quick releases	
Rim tape	
BR101 quick releases	
User guide	
Rim tape	
User guide	

COMPATIBILITY

Freewheel: Shimano/Sram, convertible to Campagnolo with optional driver body	
Front axle: Quick Release only	
Rear axle: Quick Release only	

Specifications

リム

- Material : S6000 Aluminum
- Height : 30 mm
- Joint : SUP
- Drilling : traditional
- Brake track : UB Control
- Valve hole diameter : 6.5 mm
- Tyre : clincher
- Material : S6000 Aluminum
- ETRTO size : 622x15C
- Recommended tyre sizes : 21 to 32 mm
- Height : 30 mm
- Joint : SUP
- Drilling : traditional
- Brake track : UB Control
- Valve hole diameter : 6.5 mm
- Tyre : clincher
- Internal width : 15mm
- ETRTO size : 622x15C

スポーク

- Material : steel
- Shape : straight pull, bladed
- Nipples : brass, ABS
- Count : 20 front and rear
- Material : steel
- Lacing : radial front and rear non-drive side, crossed 2 rear drive side
- Shape : straight pull, bladed
- Nipples : steel, ABS
- Count : 20 front and rear
- Lacing : radial front and rear non-drive side, crossed 2 rear drive side

ホイールハブ

- Front and rear bodies : aluminum
- Axle material : steel
- Sealed cartridge bearings
- Freewheel : FTS-L steel
- Front and rear bodies : aluminum
- Axle material : steel
- Sealed cartridge bearings
- Freewheel : FTS-L steel

VERSIONS

- Color : Black only

ホイールの重み

ホイール重量 (クイックリリースおよびクリンチャー/チューブラーを除く) (g) : 955