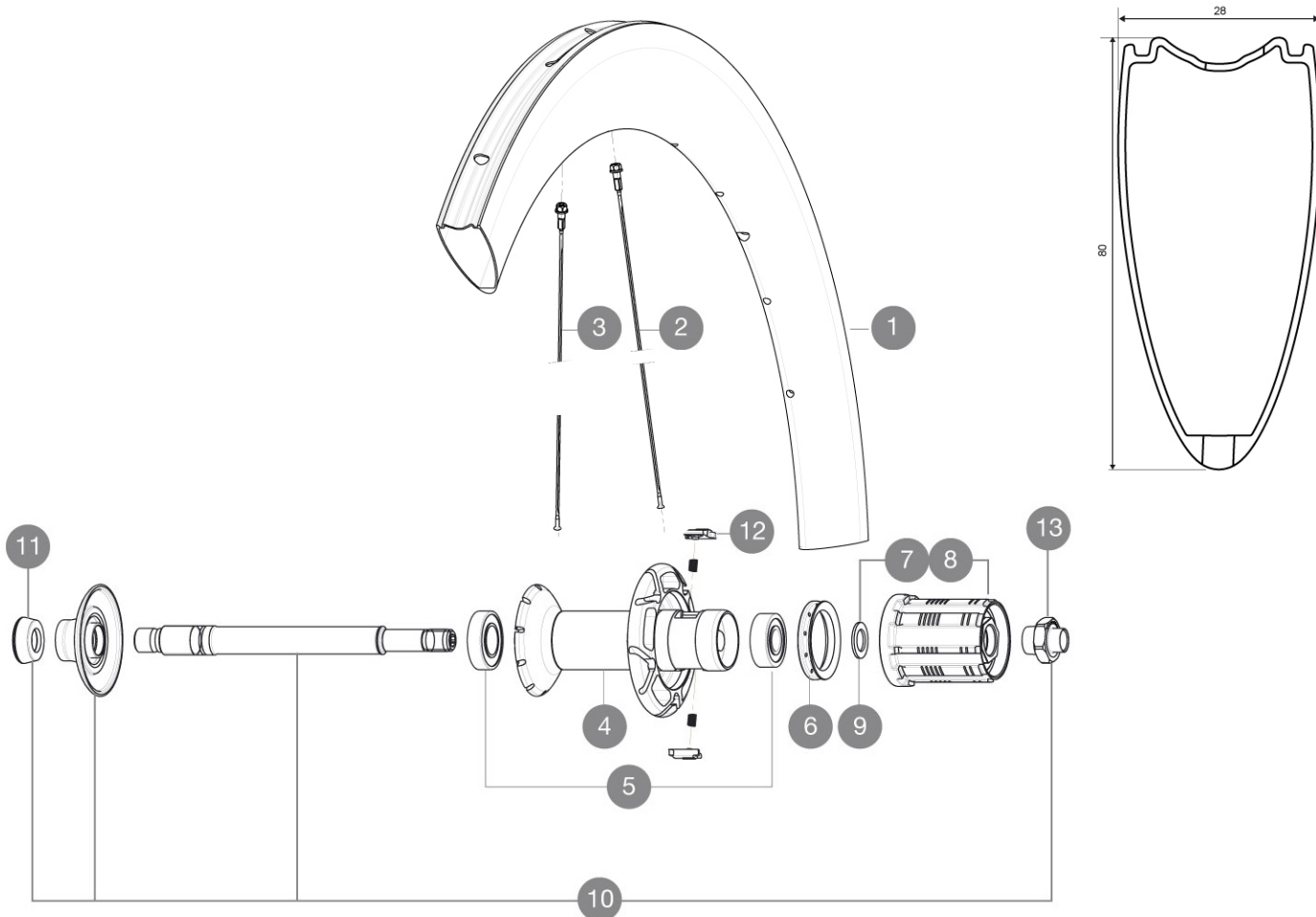


ASTM CATEGORY 1 : road only  
For a longer longevity of the wheel, Mavic recommends that the total weight supported by the wheels doesn't exceed 120kg, bike included  
Recommended tyre size: 23 mm

参照ホイール

R57201 CXRUUlt60T16Rr



RIMS



バルブ穴径 ( MM ) : 6.5 :

ADAPTERS

11 35117301 FRONT OR REAR FORK REST KIT R-SYS 2013

1	32979313	KIT REAR RIM CXR 60 TUBULAR - while stock last
1	V2403613	REAR RIM CXR60T MY16

SPOKES

2	32979601	10 BLK AERO SPOKES FRONT/NON DRIVE SIDE CXR 60 T 255mm
3	32979501	10 BLK AERO SPOKES DRIVE SIDE CXR 60 T 252mm

HUB SHELLS

4	N/A	HUB BODY
5	33000001	REAR HUB B9+6901 BEARINGS 2013
6	99500001	FTSL/FTSX FREEHUB BODY SEAL
7	30871101	FTS-L FREEWHEEL BODY HG11 2013 (8 or 9mm axle compatible)
8	30871201	FTS-L FREEWHEEL BODY ED11 2013 (8 or 9mm axle compatible)
9	30872801	SET OF 3 INTERNAL SILVER SPACERS 9mm FTS-L 2013
10	V2250301	KIT REAR AXLE AERO HUB CXR/CC40/CC SLS/CC SLE/COSMIC
12	M40578	PRO CAR SPOKES KIT (ROAD WHEELS)
13	V2373101	KIT NUT FOR ROAD ALLOY THROUGH AXLE 9mm

# MAVIC CXR Ultimate 60 T

## 付属品

BR601 quick releases	
BR601 quick releases	
CXR specific carbon brake pads	
Valve extender	
CXR specific carbon brake pads	
Multifunction adjustment wrench	
User guide	
Valve extender	
Multifunction adjustment wrench	
User guide	

## Specifications

### リム

- Material : 100% woven 3K carbon fiber
- Height : 60 mm, Width 27 mm with CX01 groves
- Material : 100% woven 3K carbon fiber
- Drilling : traditional
- Brake track : carbon
- Valve hole diameter : 6.5 mm
- Tyre : tubular
- ETRTO size : 28" tubular
- Recommended tyre size : 23 mm
- Height : 60 mm, Width 27 mm with CX01 groves
- Drilling : traditional
- Brake track : carbon
- Valve hole diameter : 6.5 mm
- Tyre : tubular
- ETRTO size : 28" tubular

### スポーク

- Material : steel
- Shape : straight pull, bladed, double butted
- Nipples : aluminum, ABS
- Count : front 16, rear 20
- Lacing : radial front and rear non-drive side, crossed 2 rear drive side
- Material : steel
- Shape : straight pull, bladed, double butted
- Nipples : aluminum, ABS
- Count : front 16, rear 20
- Lacing : radial front and rear non-drive side, crossed 2 rear drive side

### ホイールハブ

- Front and rear bodies : carbon center tube and aluminum flanges
- Axle material : aluminum
- Front and rear bodies : carbon center tube and aluminum flanges
- Adjustable sealed cartridge bearings
- Freewheel : FTS-L steel
- Axle material : aluminum
- Adjustable sealed cartridge bearings
- Freewheel : FTS-L steel

### ホイールの重み

ホイール重量 ( クイックリリースおよびクリンチャー/チューブラーを除く ) ( g ) : 880