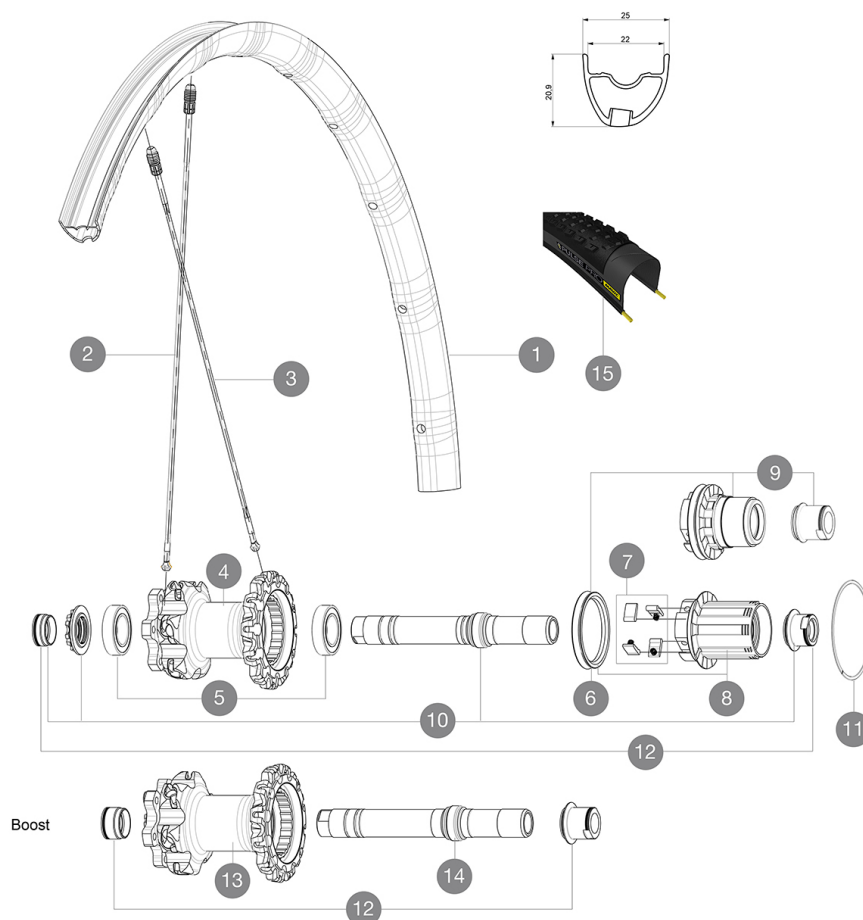


ASTM CATEGORY 3 : offroad with jumps less than 61cm

For a longer longevity of the wheel, Mavic recommends that the total weight supported by the wheels don't exceed 120kg, bike included

Recommended tyre sizes: 28 mm to 62 mm (1.1" to 2.5")

参照ホイール



RIMS



22TSS

1	V2316313	KIT REAR RIM CROSSMAX PRO 29" 22TSS
1	V2317713	KIT REAR RIM CROSSMAX PRO 29" 22mm TUBELESS STRAIGHT SIDE

SPOKES

2	V2386401	KIT 1 275mm 27,5" + 1 293mm 29" CROSSMAX PRO STAMPED
2	V2384801	12 FRONT + 1 REAR NON-DRIVE SIDE BUTTED ZICRAL SPOKES
3	35113801	20 SPOKES M7/7 DRV BLK CROSSMAX SLR 29" 269,5mm"

HUB SHELLS

4	N/A	HUB BODY
5	M40076	HUB BEARINGS 17x30x7 6903 x 2
6	99610701	ITS4 SEAL
7	99610601	ITS4 PAWLS KIT
8	35126001	ITS-4 FREEWHEEL BODY + SEAL 2013 (WITHOUT PAWLS)
9	35684101	ITS-4 FREEWHEEL BODY XD +SEAL 2013 (WITHOUT PAWLS)
10	30870401	REAR AXLE KIT ITS4 135mm D6T/DCL 2012
11	30871801	ELASTIC RING 56mm diam.
13	N/A	HUB BODY
14	V2370801	KIT REAR QRM+ AXLE BOOST ITS-4 148mm

TYRES






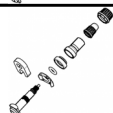
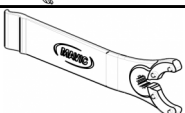
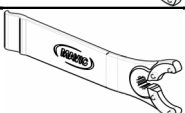
15	39243221	Pulse Pro 29" 2.1
15	39243232	Pulse Pro 29" 2.25

ADAPTERS

12	30872201	FORK REST ITS-4 135mm REAR AXLE > 2012
	30873101	2 REAR REDUCERS 12/9,5mm 2012 ITS4 HUB

MAVIC Crossmax Pro 29

付属品

1 bottle of Mavic Sealant (355 466 01) 1	
BX601 quick releases (V24 503 01 frt, V24 504 01 rear) 1	
Front QR adapters (996 941 01 for MTB or B41 043 01 for road) 1	
Rear 12x142mm adapters for ITS4 and TS2 (308 593 01 for ITS4, 329 650 01 for TS2) 1	
UST valve and accessories (129 838 01)	
UST valve and accessories (129 838 01)	
Multifunction adjustment wrench (325 423 01) 1	
Multifunction adjustment wrench (325 423 01) 1	
User guide	
User guide	

COMPATIBILITY

Freewheel: Shimano/Sram, convertible to XD with optional driver body	
Freewheel: Shimano/Sram or XD	
Front axle: convertible from 15mm thru axle to Quick Release with included adapters	
Rear axle: 12mm thru axle, convertible to Quick Release with optional adapters	

Specifications

リム

- Material : Mxstal
 - Material : Mxstal
 - Joint : SUP
 - Joint : SUP
 - Drilling : Fore
 - Drilling : Fore
 - Weight reduction : ISM 4D
 - Weight reduction : ISM 4D
 - Valve hole diameter : 6.5 mm
 - Valve hole diameter : 6.5 mm
 - Tyre : UST Tubeless and tubetype
 - Tyre : UST Tubeless and tubetype
 - Internal width : 22 mm
 - Internal width : 22 mm
 - ETRTO size 27.5" : 584x22ss
 - ETRTO size 27.5" : 584x22ss
 - ETRTO size 29" : 622x22ss
 - ETRTO size 29" : 622x22ss
- Hookless profile
Hookless profile

スポーク

- Material : Zicral
- Material : Zicral
- Shape : straight pull, bladed, double butted
- Shape : straight pull, bladed, double butted
- Count : 24 front and rear
- Count : 24 front and rear
- Lacing : front crossed 2, rear Isopulse
- Lacing : front crossed 2, rear Isopulse

ホイールハブ

- Rear body : aluminum
 - Rear body : aluminum
 - Front body : carbon with aluminum flanges
 - Front body : carbon with aluminum flanges
 - Axle material : aluminum
 - Axle material : aluminum
- Sealed cartridge bearings
Sealed cartridge bearings
- Freewheel : ITS-4 alloy
 - Freewheel : ITS-4 alloy

VERSIONS

- Color : Black only
 - Color : Black only
 - Disc standard : 6 Bolts only
 - Disc standard : 6 Bolts only
 - Hub width : Boost (front 110, rear 148) or Non-Boost (front 100, rear 135/142)
 - Hub width : Boost (front 110, rear 148) or Non-Boost (front 100, rear 135/142)
- Lefty Supermax
Lefty Supermax

ホイールの重み

ホイール重量 (クイックリリースおよびクリンチャーチューブラーを除く) (g) :
Weight Rear 27.5": 835
Weight Rear 29": 865